

Limited English Proficiency in Central Lane MPO

This map displays by census block group the percentage of respondents speaking a language other than English who indicated that they spoke English less than "Well" using data from the 2005 American Community Survey. For the Central Lane Metropolitan Planning Organization Area as a whole, this percentage was 2.7%.

Percent of Residents Who Speak English less than "Well"

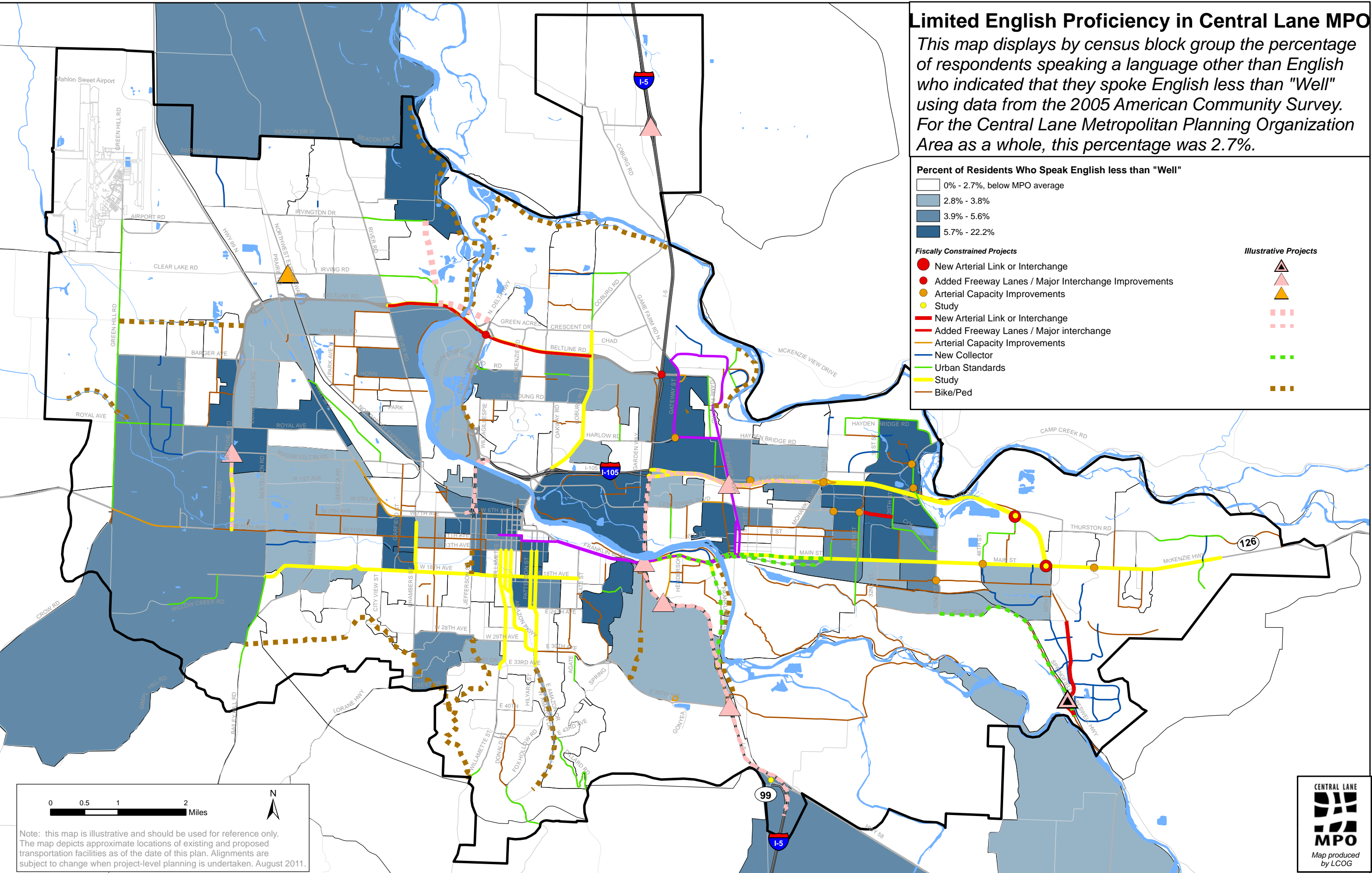
- 0% - 2.7%, below MPO average
- 2.8% - 3.8%
- 3.9% - 5.6%
- 5.7% - 22.2%

Fiscally Constrained Projects

- New Arterial Link or Interchange
- Added Freeway Lanes / Major Interchange Improvements
- Arterial Capacity Improvements
- Study
- New Arterial Link or Interchange
- Added Freeway Lanes / Major interchange
- Arterial Capacity Improvements
- New Collector
- Urban Standards
- Study
- Bike/Ped

Illustrative Projects

- ▲
- ▲
- ▲
- ▲
- ▲
- ▲
- ▲
- ▲
- ▲
- ▲
- ▲



Note: this map is illustrative and should be used for reference only. The map depicts approximate locations of existing and proposed transportation facilities as of the date of this plan. Alignments are subject to change when project-level planning is undertaken. August 2011.

