

PSCC OFFICERS

**CHAIR, FAYE STEWART**  
Commissioner (Rural)

**VICE CHAIR, TIM LAUE**  
Lay Citizen

VOTING MEMBERS

**PETE KERNS**  
Chief of Police

**RUSS BURGER**  
Sheriff

**ALEX GARDNER**  
District Attorney

**MARYANN BEARDEN**  
State Court Judge

**GREG HAZARABEDIAN**  
Public Defender

**JOAN COPPERWHEAT**  
Parole and Probation Manager

**LISA SMITH**  
Youth Services Director

**ROB ROCKSTROH**  
Health & Human Services  
Director (Mental Health)

**KAREN GILLETTE**  
Public Health Manager

**JENNIFER SOLOMON**  
Eugene City Councilor

**HILLARY WYLIE**  
Springfield City Councilor

**CHUCK SPIES**  
Lowell City Administrator

**PAUL SOLOMON**  
Lay Citizen

NON-VOTING MEMBERS

**MIKE BLOOM**  
OSP Representative

**STEVE HARDER**  
Oregon Youth Authority

**JEFF SPARTZ**  
County Administrator



**The Public Safety Coordinating Council's  
Criminal Justice System Report Card Data Book  
January 2010**

***Please Note:***

*When a new chart was added which includes updated data, a ★ was placed by the Figure title.*

*When the new data resulted in a change in the grade, a ★ was added next to the new grade.*

The PSCC Criminal Justice System Report Card Data Books and Report Cards are available at [www.lcog.org/safety.cfm](http://www.lcog.org/safety.cfm). Follow the link to Community Safety Data Publications.



## Table of Contents

<b>Public Safety Coordinating Council Vision and Guiding Principles</b> .....	<b>1</b>
<b>2010 Report Card on the Criminal Justice System in Lane County, Oregon – Background</b> .....	<b>2</b>
<b>Grading System for the Report Card</b> .....	<b>3</b>
<b>Report Card Data: Part A – Adult and Combined Criminal Justice Data</b> .....	<b>5</b>
<b>I. Crime and Safety</b> .....	<b>7</b>
○ Reported Crime .....	7
● Figure 1.1 Rate of Reported Serious Violent Crime per 10,000 Population .....	7
● Figure 1.2 Rate of Reported Property Crime per 10,000 Population .....	7
● Figure 1.3 Serious Reported Crime in 2004 per 1,000 Population – Lane County’s Rank Vs. 252 Metro Counties 100,000 to 1,000,000 Population .....	8
○ Assault, Drug, and Alcohol Crimes .....	9
● Figure 1.4 Adult Assault Arrest Rate per 10,000 Adults.....	9
● Figure 1.5 Adult Drug Abuse Arrest Rate per 10,000 Adults.....	9
● Figure 1.6 DUII Arrests per 10,000 Population .....	10
○ Domestic Violence.....	11
● Figure 1.7 Lane County Reported DV Assaults per 10,000 Population .....	11
○ Child Abuse.....	12
● Figure 1.8 Child Abuse Victimization Rate per 10,000 Children Under Age 18 .....	12
○ Traffic Accidents .....	13
● Figure 1.9 Traffic Injury Accidents (Excluding Fatal Crashes) per 10,000 Population .....	13
● Figure 1.10 Fatal Crashes per 10,000 Population .....	14
● Figure 1.11 Percent of Alcohol Involved Fatal Crashes .....	14
<b>II. Resources and Capacity</b> .....	<b>15</b>
○ Number of Officers .....	15
● Figure 2.1 Number of Officers per 10,000 Population .....	15
○ Jail Capacity .....	16
● Figure 2.2 Jail Beds Occupied per 1,000 Reported Crimes.....	16

•	Figure 2.3 Funded Jail Beds per 1,000 Reported Crimes .....	16
•	Figure 2.4 Built vs. Funded Beds .....	17
•	Figure 2.5 Built vs. Funded Beds By Facility for 2009.....	17
•	Figure 2.6 Releases Triggered by Overcrowding as Percent of Lodgings.....	18
○	District Attorney Intakes per Lawyer.....	19
•	Figure 2.7 Total DA Intakes per Lawyer .....	19
•	Figure 2.8 DA Felony Intakes per Lawyer.....	19
•	Figure 2.9 Number of Lawyers Needed in DA’s Criminal Division .....	19
○	Probation Officer Caseloads.....	20
•	Figure 2.10 Average PO Caseload Size.....	20
III.	Efficient and Effective Use of Resources .....	21
○	Arrests per Officer .....	21
•	Figure 3.1 Rate of Arrests per Officer – Violent Crime .....	21
•	Figure 3.2 Rate of Arrests per Officer – Property Crime.....	21
○	Arrests to Reports .....	22
•	Figure 3.3 Rate of Arrests to Reports for Violent Crimes .....	22
•	Figure 3.4 Rate of Arrests to Reports for Property Crimes.....	22
○	Speedy Trials .....	23
•	Figure 3.5 Percent of State Court Felony Cases Completed Within 180 Days.....	23
•	Figure 3.6 Percent of State Court Misdemeanor Cases Completed Within 180 Days.....	23
IV.	Justice and Accountability .....	25
○	Failure To Appear .....	25
•	Figure 4.1 Percent of Court Events Where Defendants Fail to Appear.....	25
•	Figure 4.2 Percent of Individuals Who Fail to Appear.....	25
○	Failures on Supervision .....	26
•	Figure 4.3 Three Year Re-offense Rate for Offenders on Post-Prison Supervision.....	26
•	Figure 4.4 Three Year Re-offense Rate for Offenders on Probation Supervision.....	26
○	Driving Under the Influence of Intoxicants (DUII) Enforcement.....	27
•	Figure 4.5 DUII Enforcement Index .....	27

<b>Report Card Data: Part B – Juvenile Data.....</b>	<b>29</b>
I. Crime and Safety .....	31
○ Juvenile Referrals and Arrests .....	31
• Figure 1.1 Juvenile Rate of Criminal Referral to Juvenile Services per 1,000 Youth Age 17 and Under.....	31
• Figure 1.2 Juvenile Arrest Rate per 10,000 Youth Age 10-17.....	31
• Figure 1.3 Juvenile Violent Crime Arrest Rate per 10,000 Youth.....	32
• Figure 1.4 Juvenile Drug Abuse Arrest Rate per 10,000 Youth.....	33
• Figure 1.5 Juvenile Property Crime Arrest Rate per 10,000 Youth .....	33
○ Dropouts .....	34
• Figure 1.6 Percent of Students Dropping Out of School .....	34
○ Drug and Alcohol Abuse .....	35
• Figure 1.7 Percent of Juveniles Who Report Marijuana Use in Last 30 Days – 8 <sup>th</sup> Grade.....	35
• Figure 1.8 Percent of Juveniles Who Report Marijuana use in Last 30 Days – 11 <sup>th</sup> Grade.....	35
• Figure 1.9 Percent of Juveniles Who Report Binge Drinking in the Last 30 Days – 8 <sup>th</sup> Grade .....	36
• Figure 1.10 Percent of Juveniles Who Report Binge Drinking in the Last 30 Days – 11 <sup>th</sup> Grade.....	36
II. Resources and Capacity.....	37
○ Juvenile Detention Capacity .....	37
• Figure 2.1 Lane County Department of Youth Services Juvenile Bed Resources – Local and State Beds Allocated to Lane County.....	37
• Figure 2.2 Built vs. Funded Beds by Facility .....	38
• Figure 2.3 Built vs. Funded Beds .....	38
III. Efficient and Effective Use of Resources .....	39
○ Juvenile Re-offenses.....	39
• Figure 3.1 Percent of Juvenile Offenders Who Did Not Re-offend Within 12 Months.....	39
• Figure 3.2 Percent of Juvenile Offenders With 1-2 New Referrals Within 12 Months.....	40
○ Chronic Juvenile Offenders.....	41
• Figure 3.3 Chronic Juvenile Offenders – Those With Three Or More Referrals Within 12 Months .....	41

- Re-offenses and Tracking Time ..... 42
  - Figure 3.4 Juvenile Re-offenses At 36 Months By Year ..... 42
- IV. Justice and Accountability..... 43
  - System Capacity ..... 43
    - Figure 4.1 Lane County Juveniles Released From Detention Early ..... 43

## Public Safety Coordinating Council Vision and Guiding Principles

### Vision Statement

*We will live in a safe community supported by a safety and justice system that works together to focus on prevention and restoration, while balancing intervention and enforcement. The system will be built on a solid foundation of constitutional principles, statutory laws and community values which honor and promote personal responsibility, family and neighborhood involvement, and trust among people and institutions.*

### Guiding Principles

- *We will prevent crime by promoting conditions, behaviors, and individual and community attitudes that result in a safe community.*
- *We will hold youth and adult offenders accountable and employ sanctions which fit the circumstances of the crime and the offender.*
- *We will promote the rights of victims and the community to be compensated and restored.*
- *We will provide opportunities for skill training, rehabilitation, and reintegration of offenders into the community.*
- *We will assist community members to understand and accept their responsibility to contribute to and maintain a safe and just society.*
- *We will coordinate the programs and activities of governmental and private agencies that affect community safety and justice, and will ensure agencies work in partnership with the business community and citizens.*
- *We will make effective community safety decisions based on research data from a comprehensive information management system.*
- *We will support the rights of all individuals to a fair and non-discriminatory legal process.*

## 2010 Report Card on the Criminal Justice System in Lane County, Oregon – Background

### Why Produce a Report Card?

As in locales across the United States, 50-70% of most local jurisdiction budgets in Lane County are allocated to the criminal justice system. This Report Card is designed to report the progress of the criminal justice system in improving services to the community. This project was developed by the Public Safety Coordinating Council (PSCC) to address one of their Guiding Principles: *We will assist community members to understand and accept their responsibility to contribute to and maintain a safe and just society.*

The Report Card is designed to create a forum for the PSCC to report to the public about safety in the community. In addition, it is intended to be a valuable tool for policy makers and community planners to monitor and improve performance.

### The Process for Developing the Report Card

The Report Card was developed by the PSCC Public Information Task Force and adopted by the full PSCC. The Task Force, staffed by Lane Council of Governments, determined measures and collected longitudinal and baseline data for comparison. This is the second Report Card, produced and distributed so the community can track system progress.

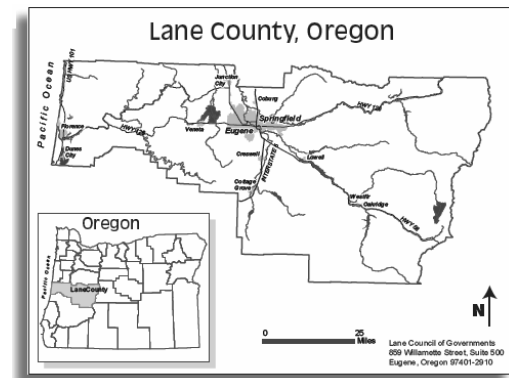
### Criminal Justice System

The local criminal justice system in Lane County includes: nine law enforcement agencies; four primary public safety answering points (9-1-1 and dispatch centers); the county jail in Eugene; three small city jails; district attorney; public defender;

probation and post-prison supervision; State Circuit Court and Eugene and Springfield municipal courts; adult treatment and transitional services; juvenile services; juvenile court; shelter; and juvenile educational and treatment services.

### Information on Lane County, Oregon

Lane County has a population of **345,880** people living in a geographic area of 4,618 square miles – roughly the size of the state of Connecticut. The county stretches from the summit of the 10,000 foot Cascade Mountains, through the tree covered Willamette Valley prairie and wetlands, over the 6,000 foot Coast Range to the Pacific Ocean. Lane is an urban/rural county with more than half the residents (61%) living in Eugene and Springfield, the second largest urban area in the state. Approximately 12% live in small cities and the remaining 27% live in unincorporated areas scattered around the county. A total of 1,433 miles of county, 918 miles of city, and 484 miles of state maintained roadways wind along rivers, lakes, and the two mountain ranges in this starkly changing geography, connecting widely separated small cities and the urban core.



## Grading System for the Report Card

Data were chosen as indicators for each category that are representative of the issues and, where possible, are updated annually and have comparable state and national data available. Some data that would make excellent indicators are not collected.

Each category and the indicators included in each category are assigned grades. Grades are determined by comparing Lane County's trend and its current rate over the last seven years of available data to the trend and current rate of other geographic areas with comparable data.

- A Trend and current rate substantially better than comparison geographic areas
- B Trend and current rate better than comparison geographic areas
- C Trend and current rate roughly equal to comparison geographic areas
- D Trend and current rate worse than comparison geographic areas
- F Trend and current rates substantially worse than comparison geographic areas

A plus (+) is added to the grade if the trend and current rate have improved over the last three years of available data compared to the last seven years.

A minus (-) is added to the grade if the trend and current rate have worsened over the last three years of available data compared to the last seven years.

Grades of "F" are not eligible for either a plus or a minus.



**Report Card Data: Part A – Adult and Combined Criminal Justice Data**

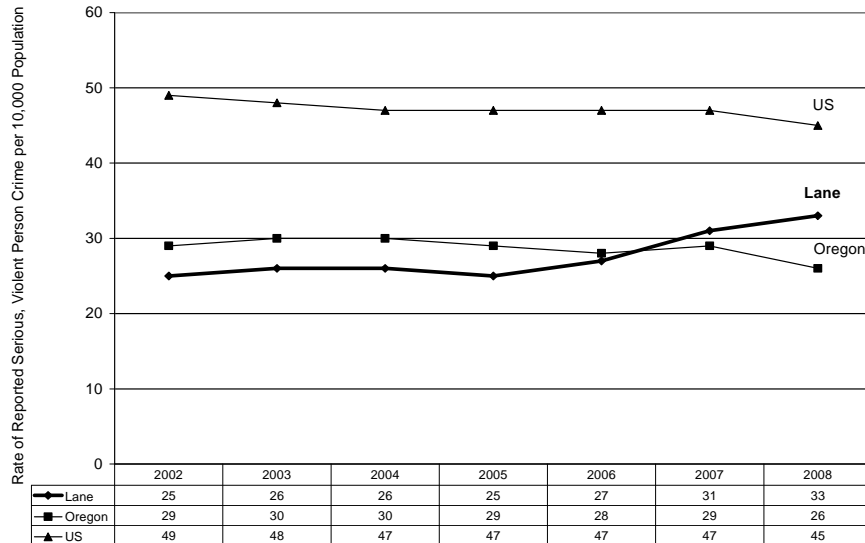


**Category I: Crime and Safety**  
**Grade 2009: C Grade 2010: B-★**

*Crime and Safety* includes: reported crime; adult assault; drug, and alcohol arrests; domestic violence; child abuse; traffic accidents; and victimization.

- Reported Crime.

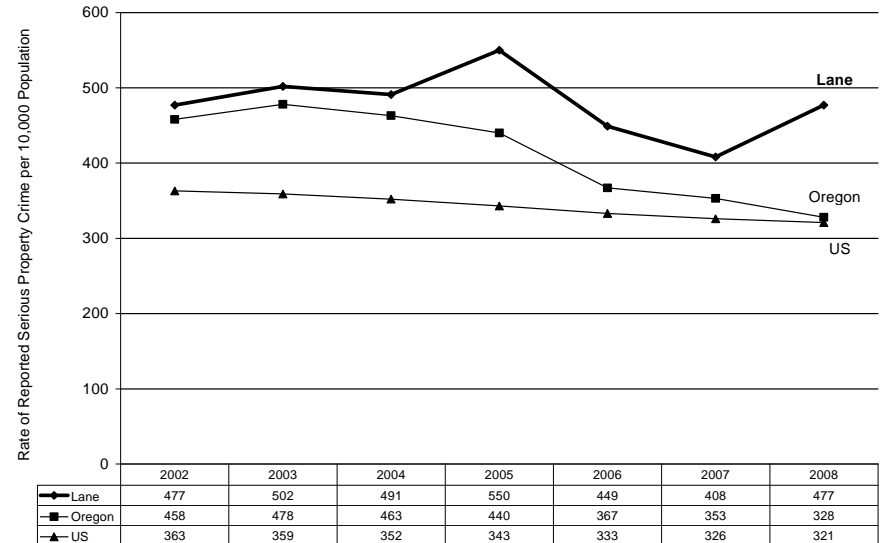
★Figure 1.1 Rate of Reported Serious Violent Crime per 10,000 Population



Source: FBI, *Crime in the United States*

**Grade 2009: C- Grade 2010: D★**

★Figure 1.2 Rate of Reported Property Crime per 10,000 Population

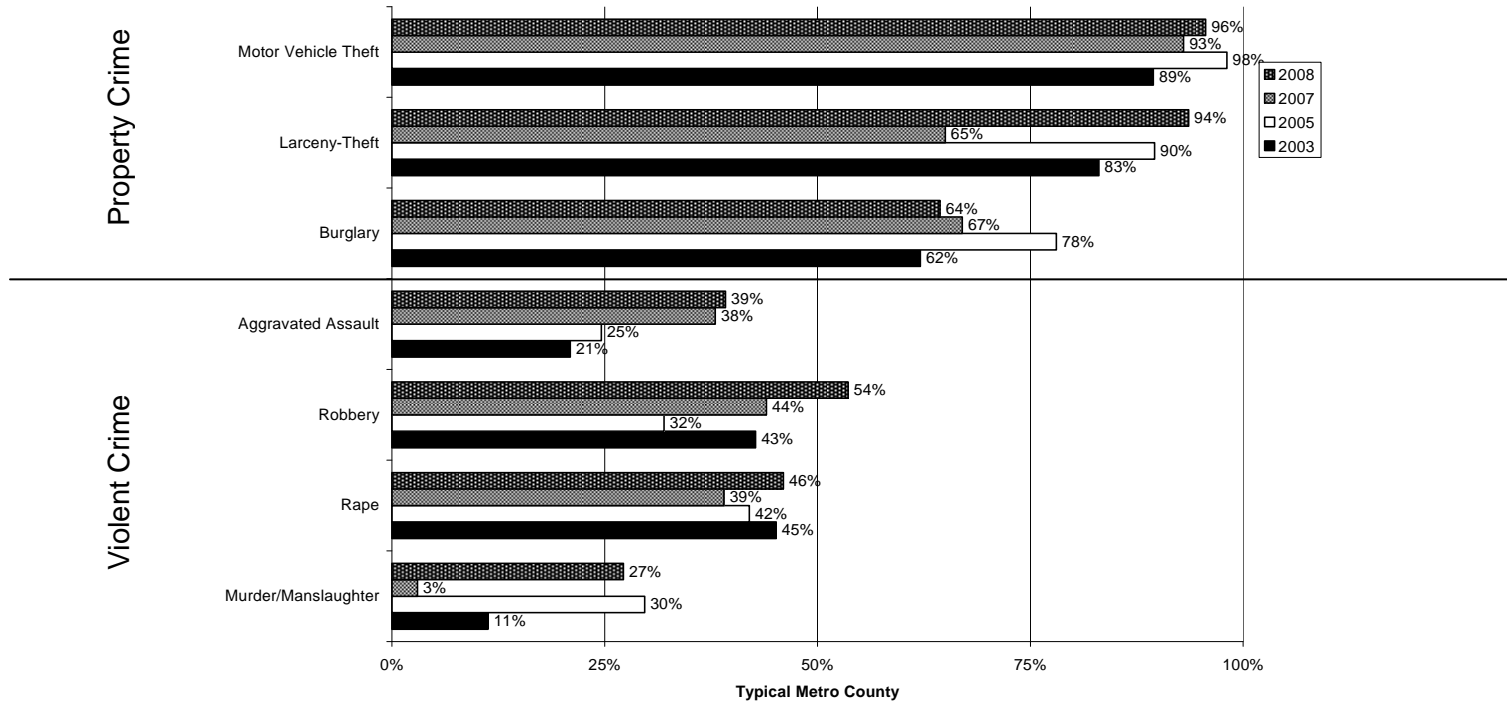


Source: FBI, *Crime in the United States*

**Grade 2009: D+ Grade 2010: F★**

The figure below shows Lane County's ranking for serious crimes when measured against other metropolitan counties in the United States. For instance, Lane County is in the 93<sup>rd</sup> percentile in Motor Vehicle Theft, meaning only 7% of the counties had a motor vehicle theft rate higher than Lane County's. Lane County was in the 98<sup>th</sup> percentile in 2005.

**Figure 1.3 Serious Reported Crime in 2003, 2005, and 2007 per 100,000 Population  
Lane County's Rank Among 259 Metropolitan Counties of 100,000 to 1,000,000 Population**

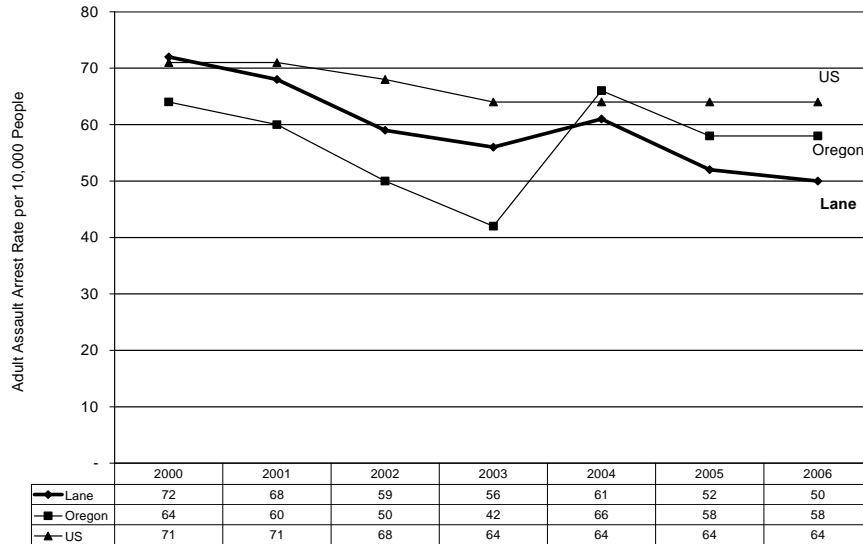


Source: FBI, *Crime in the United States*

○ Assault, Drug, and Alcohol Crimes.

Note: Several factors influence arrest rates such as system capacity to arrest, prosecute, and hold offenders.

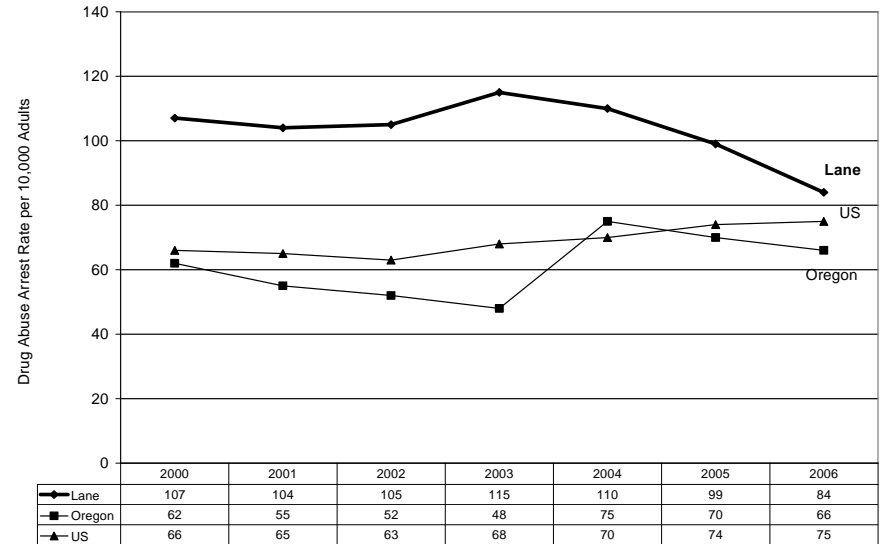
★Figure 1.4 Adult Assault Arrest Rate per 10,000 Adults



Source: Easy Access to FBI Arrest Statistics

Grade 2009: B-      Grade 2010: A★

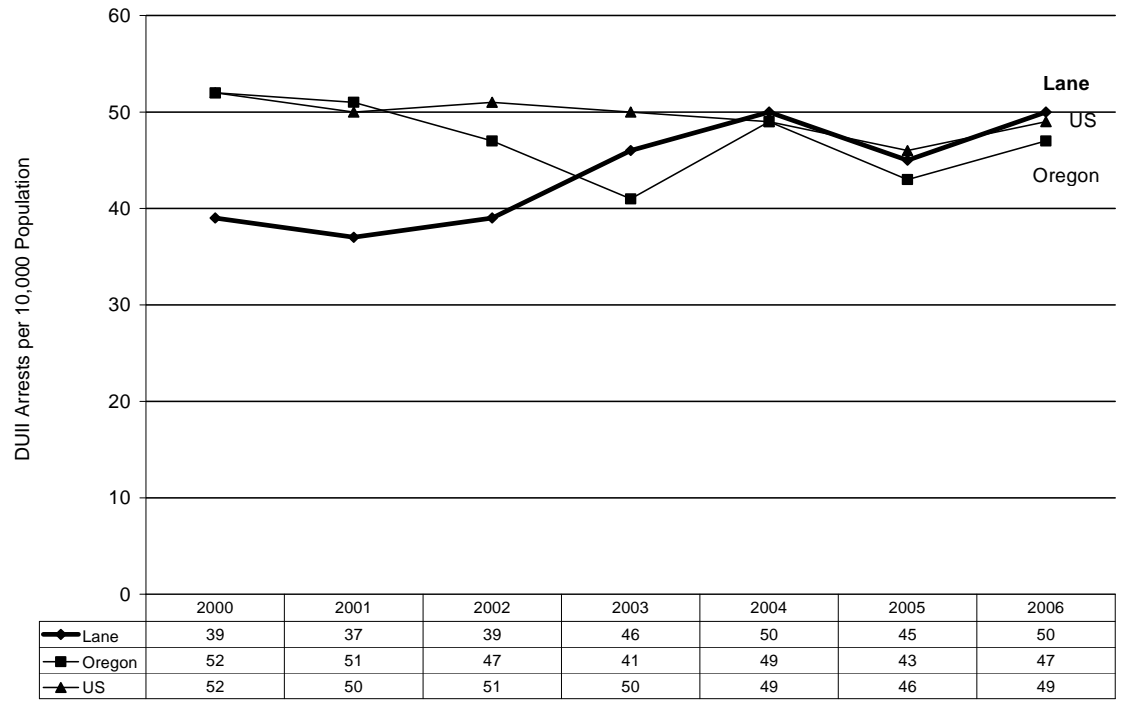
★Figure 1.5 Adult Drug Abuse Arrest Rate per 10,000 Adults



Source: Easy Access to FBI Arrest Statistics

Grade 2009: C+      Grade 2010: B★

★Figure 1.6 DUII Arrests per 10,000 Population



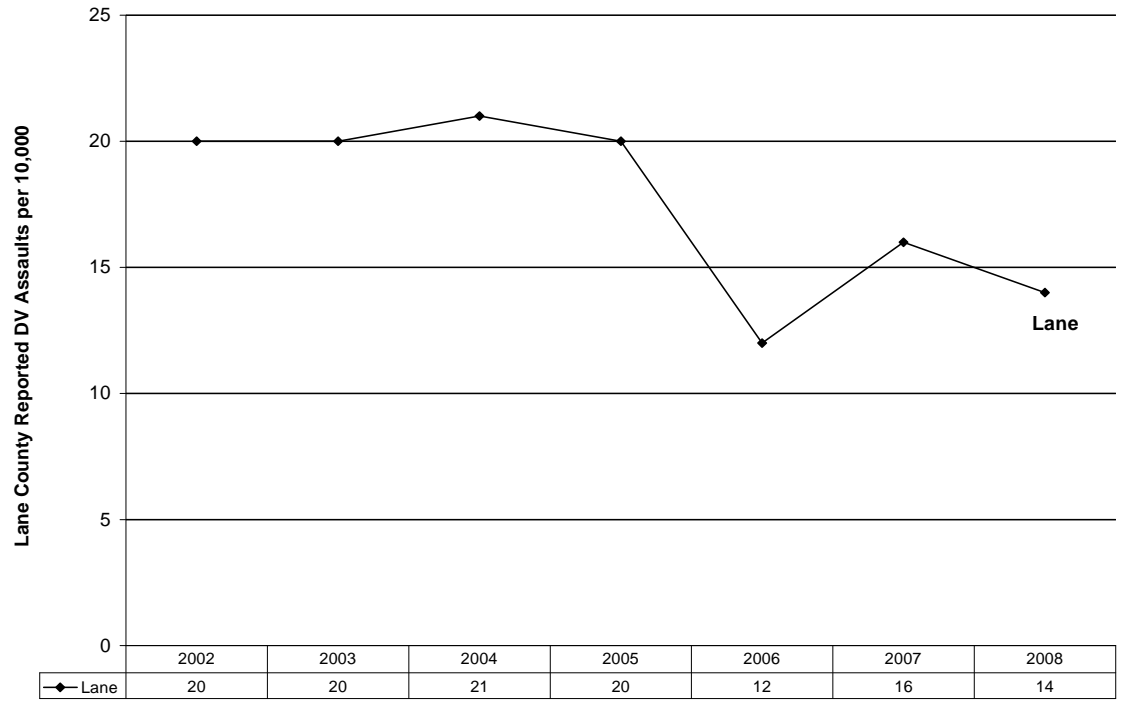
Source: Easy Access to FBI Statistics

Grade 2009: F

Grade 2010: F

○ Domestic Violence.

Figure 1.7 Lane County Reported DV Assaults per 10,000 Population

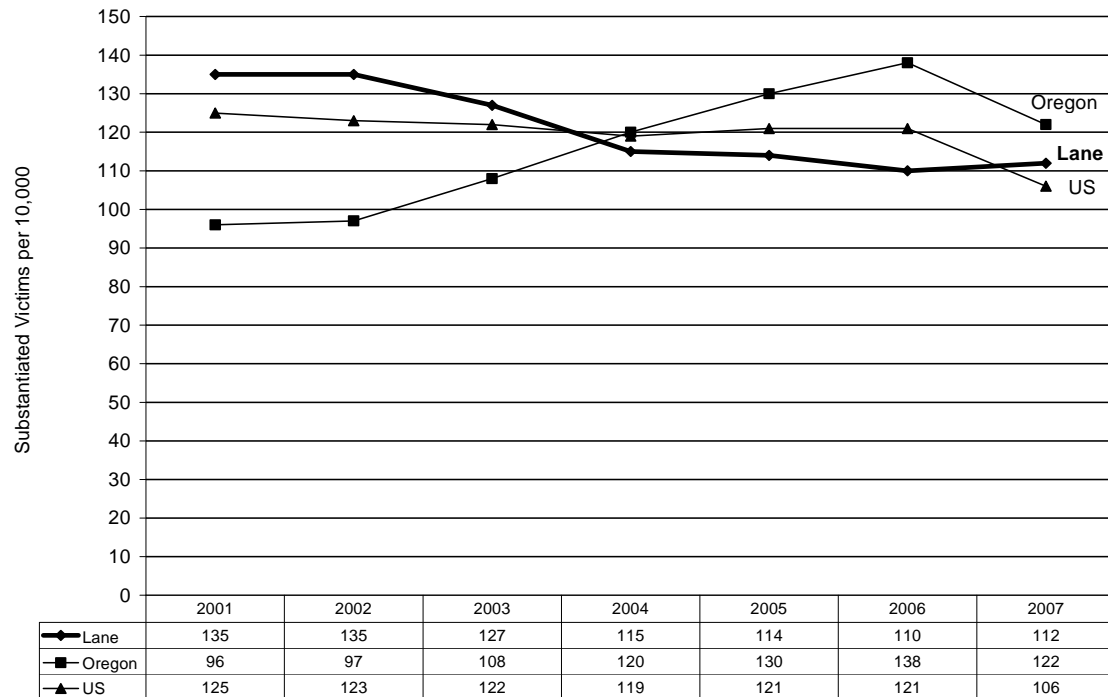


Source: Area Information Records System

Grade 2009: A-      Grade 2010: A-

o Child Abuse.

★ Figure 1.8 Child Abuse Victimization Rate per 10,000 Children Under Age 18



**Note:** Reporting period changed to Federal Fiscal Year in 2003 to conform to federal reporting requirements.

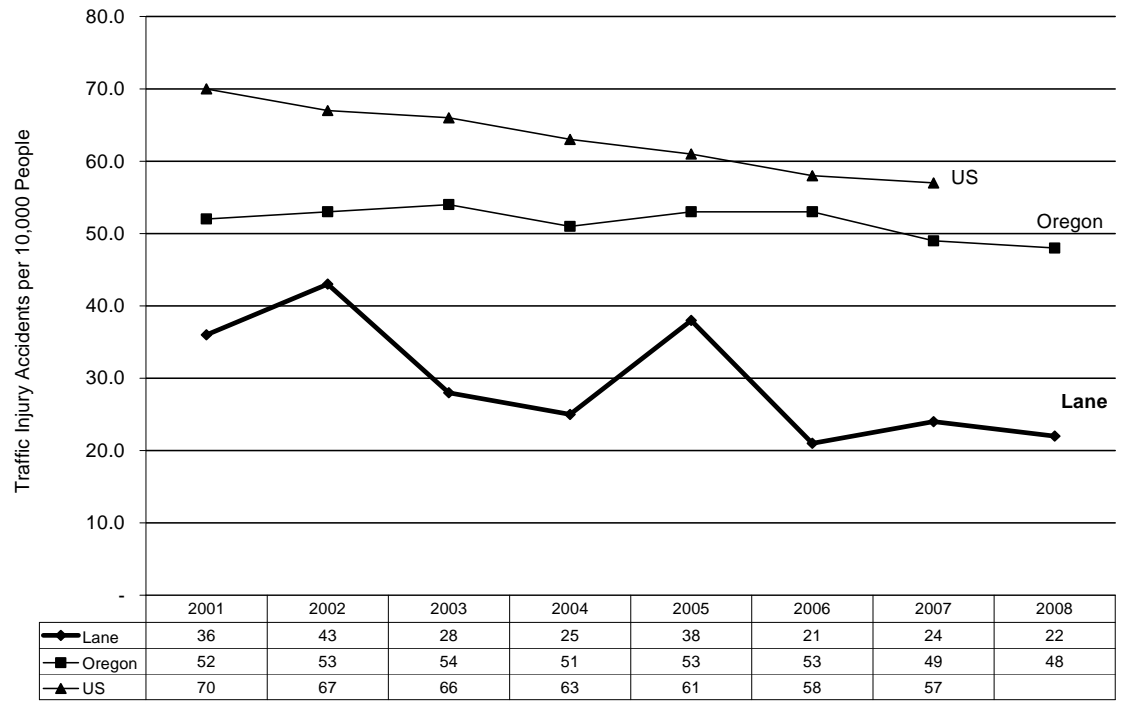
Source: Lane and Oregon – DHS: *The Status of Children in Oregon's Child Protection System 2004*

Source: US – National Clearinghouse on Child Abuse and Neglect Information: *Child Maltreatment 1996-2003*

**Grade 2009: A-      Grade 2010: A-**

○ Traffic Accidents.

★ Figure 1.9 Traffic Injury Accidents (Excluding Fatal Crashes) per 10,000 Population

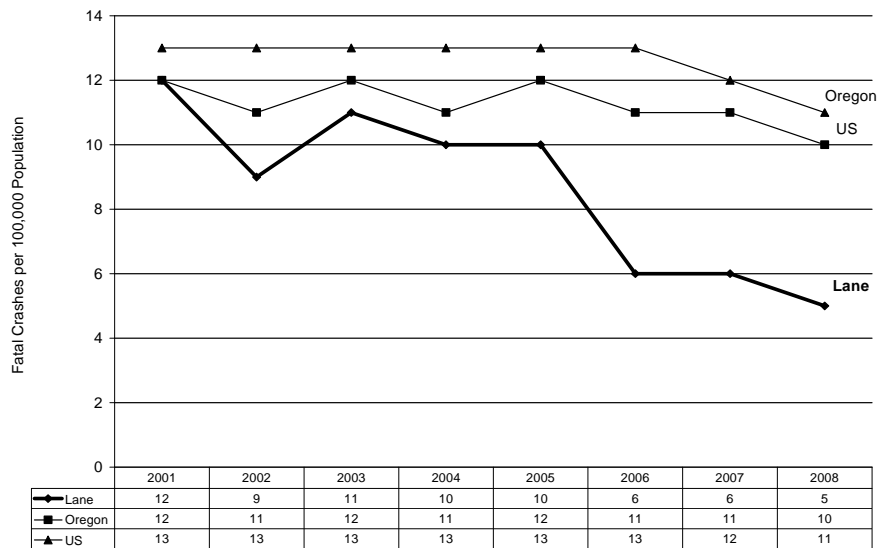


Source: Lane and Oregon - Oregon Department of Transportation

Source: US - US DOT, National Highway Traffic Safety Administration, Traffic Safety Facts Annual Reports

Grade 2009: A-      Grade 2010: A★

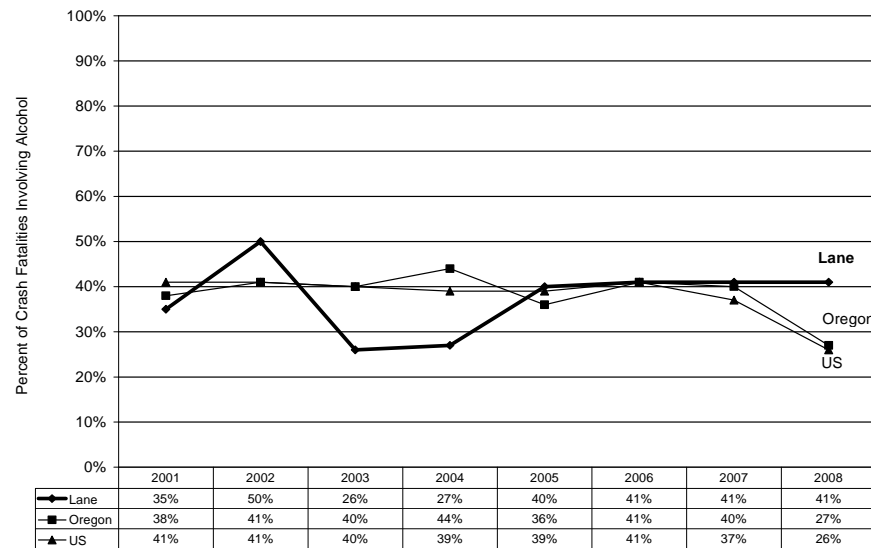
★ Figure 1.10 Fatal Crashes per 100,000 Population



Source: Lane and Oregon – Oregon Department of Transportation  
 Source: US – US DOT, National Highway Traffic Safety Administration, Fatality Analysis Reporting System

Grade 2009: C-      Grade 2010: A★

★ Figure 1.11 Percent of Alcohol Involved Crash Fatalities



Source: US DOT, National Highway Traffic Safety Administration, Fatality Analysis Reporting System

Grade 2009: D      Grade 2010: F★

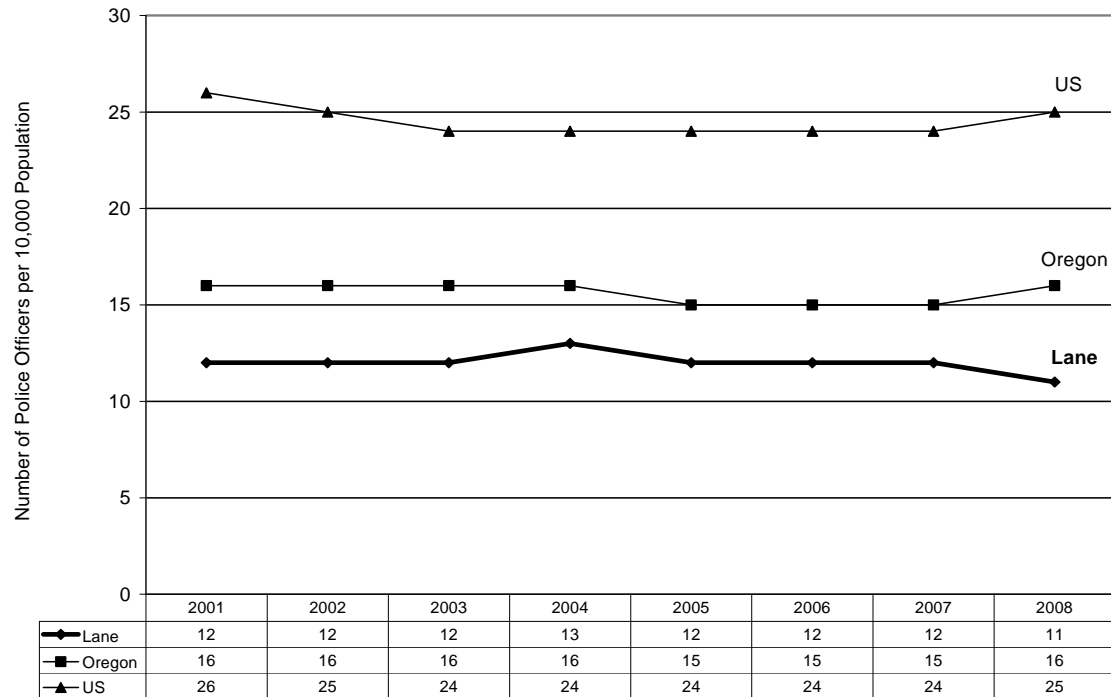
**Category II: Resources and Capacity**

**Grade 2009: F      Grade 2010: F**

*Resources and Capacity* includes: number of officers; jail capacity; custody and overcrowding releases from Lane County Adult Corrections; District Attorney intakes per lawyer; District Attorney prosecution rates; and Probation Officer caseloads.

- o Number of Officers.

★ **Figure 2.1 Number of Officers per 10,000 Population**



**Note:** Number of Officers includes all law enforcement officers in the county including State Police stationed in Lane County

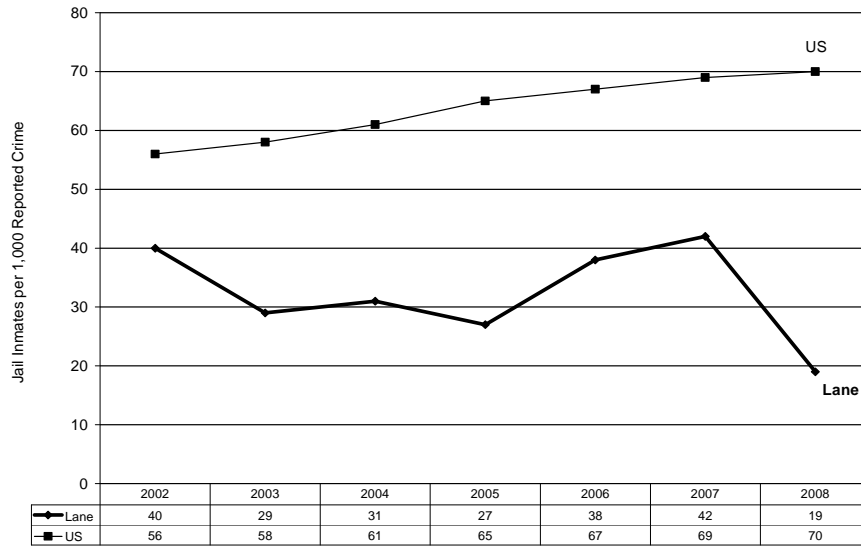
Source: Lane and Oregon - Law Enforcement Data System, Uniform Crime Report

Source: US – FBI, Law Enforcement Officers Killed and Assaulted

**Grade 2009: D-      Grade 2010: F★**

○ Jail Capacity.

★Figure 2.2 Jail Beds Occupied per 1,000 Reported Crimes



**Note:** The number of jail beds occupied used in this calculation is a one-day snapshot of beds occupied at the Lane County Jail, Forest Work Camp, and Community Corrections Center.

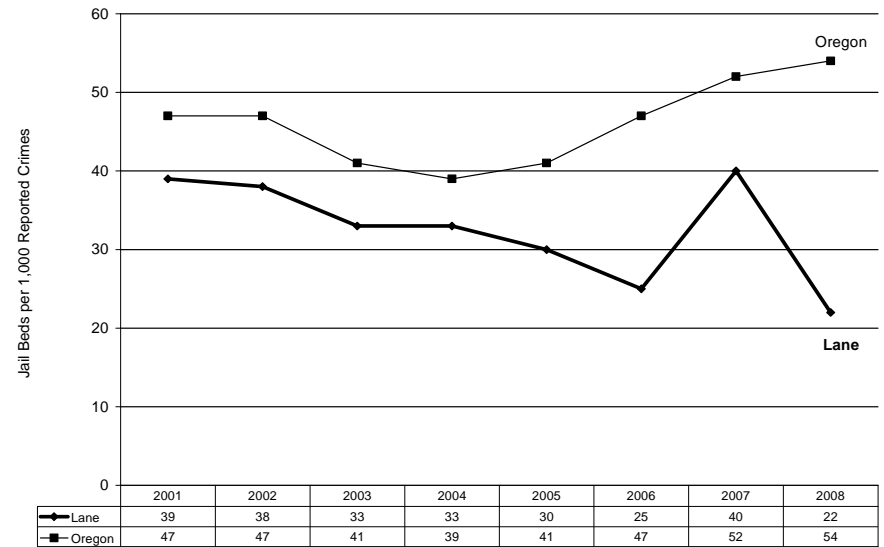
Source: Lane County Sheriff's Office

Source: US – Bureau of Justice Statistics, Prisoner and Jail Inmates at Midyear

Grade 2009: F

Grade 2010: F

★Figure 2.3 Funded Jail Beds per 1,000 Reported Crimes



**Note:** The number of funded jail beds does not include Community Corrections Center beds in order to utilize data comparable with the state data.

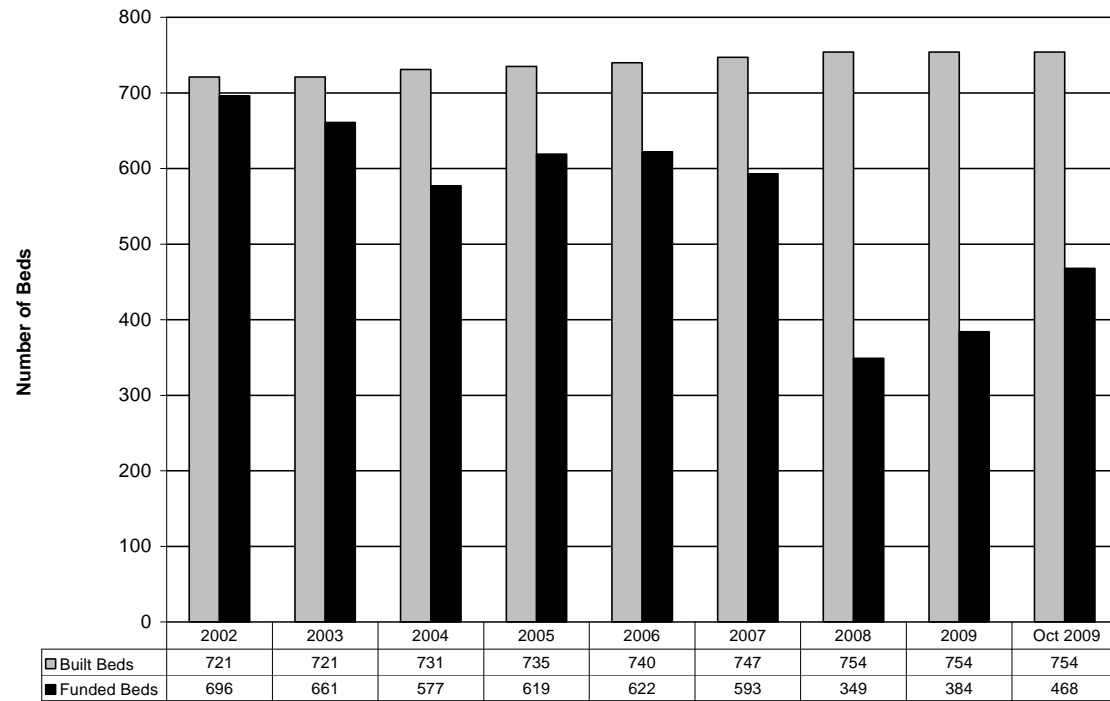
Source: Lane County Sheriff's Office

Source: Oregon - Oregon Jail Managers Association, Washington County Sheriff

Grade 2009: F

Grade 2010: F

★Figure 2.4 Built vs. Funded Beds



Source: Lane County Sheriff's Office

The number of built beds increased because the Sheriff instituted a policy of double-bunking for some of the jail cells. The number of “funded” beds refers to the number of beds which are able to be used due to changes in the number of staff at the jail.

★Figure 2.5 Built vs. Funded Beds By Facility for 2009

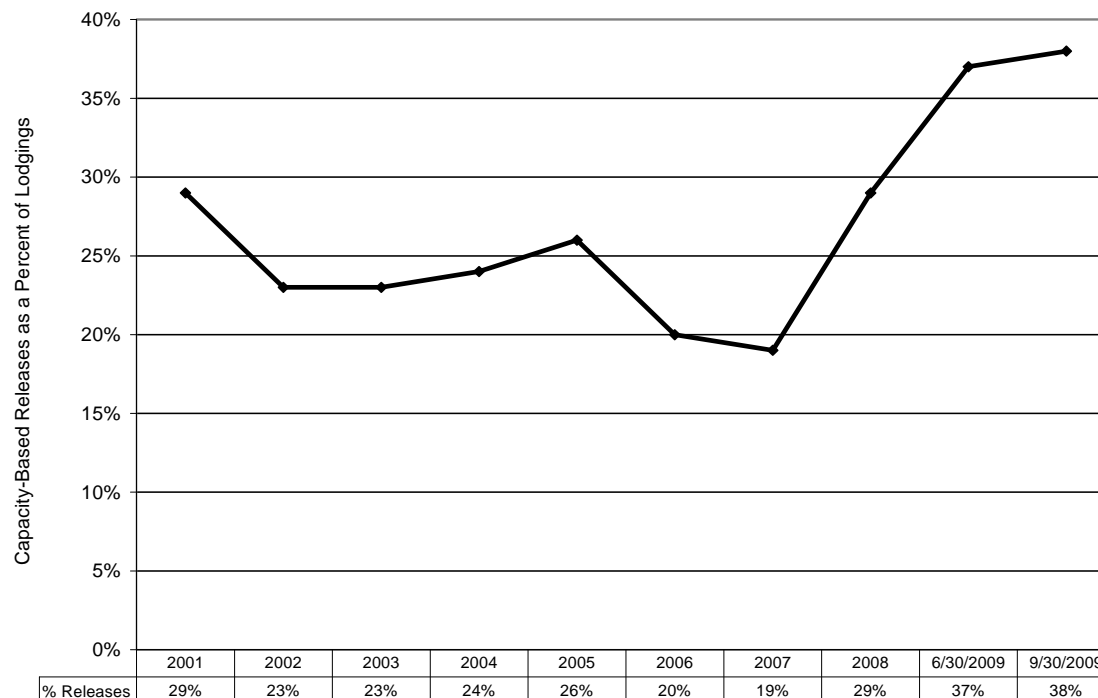
2009	Jail	CCC	FWC
Funded Beds	351	33	0
Built Beds	507	122	125
% Operated	0.69	0.27	0

Oct 2009	Jail	CCC	FWC
Funded Beds	435	33	0
Built Beds	507	122	125
% Operated	0.86	0.27	0

Source: Lane County Sheriff's Office

o Custody and Overcrowding Releases.

★ Figure 2.6 Releases Triggered By Overcrowding as a Percent of Lodgings



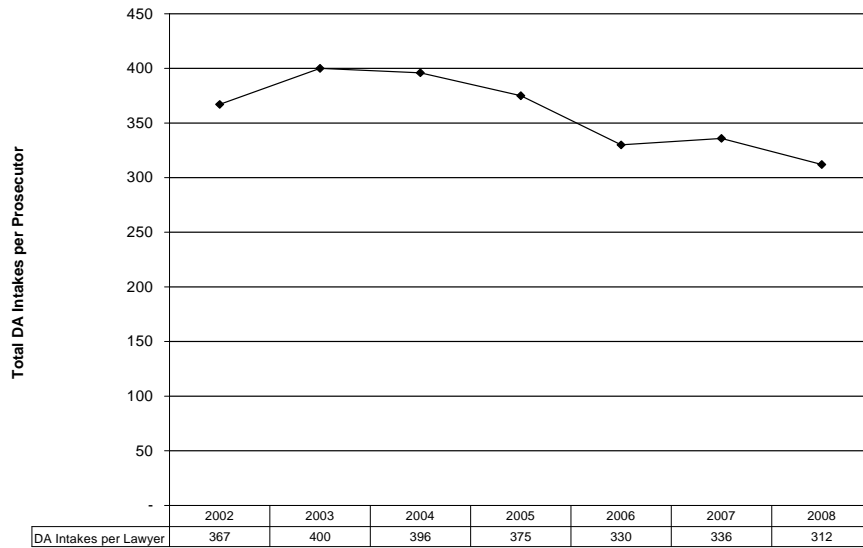
**Note:** “Percent of Lodgings” is the number of inmates released as a percent of all inmates housed at that time in the Lane County Jail.

Source: Lane County Sheriff's Office

Grade 2009: F      Grade 2010: F

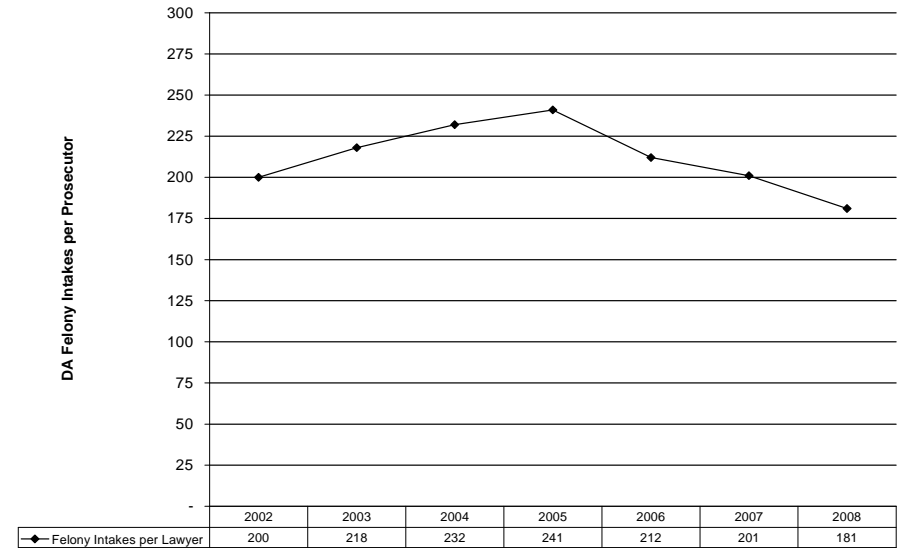
○ District Attorney Intakes per Lawyer.

★Figure 2.7 Total DA Intakes per Lawyer



Source: DA's office; DACMS

★Figure 2.8 DA Felony Intakes per Lawyer



Source: DA's office; DACMS

Figure 2.9 Number of Lawyers Needed in DA's Criminal Division

2.9 Number of Lawyers Needed in DA's Office	2000	2001	2002	2003	2004	2005	2006	2007	2008
Number of Lawyers in DA's office		26	25	23	22	22	22	22	22
FTE Needed		34	32	33	32	31	28	27	26
% Staffed (Lawyers/FTE Needed)		0.76	0.78	0.7	0.69	0.71	0.79	0.81	0.85

Source: APRI study, DACMS

○ Probation Officer Caseloads.

★ Figure 2.10 Average PO Caseload Size

	2003 Average Caseload Size	2009 Average Caseload Size
Lane	100	97
Oregon	75	75

*Source 2003: Multnomah County Community Justice Department Survey of Community Corrections Directors in August 2003*

*Source 2008: LCOG Survey of Oregon Community Corrections Programs*

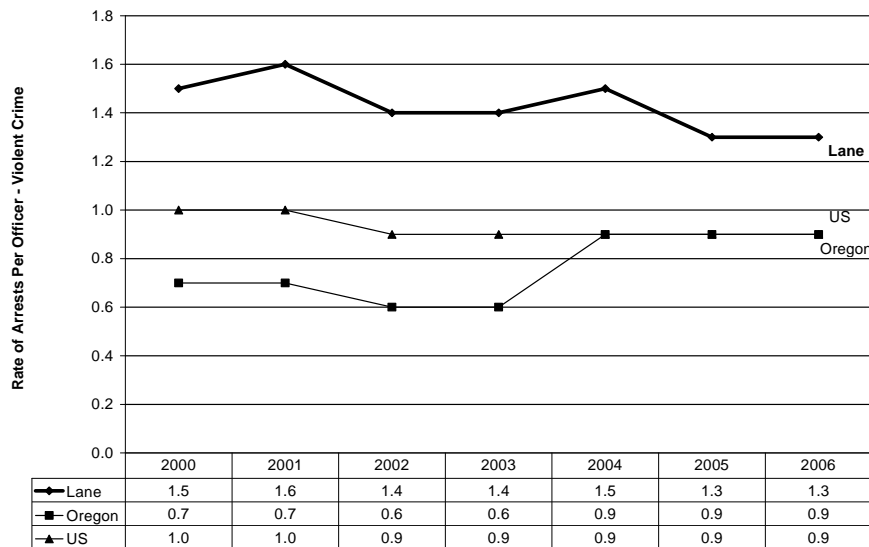
**Grade 2006: F**

**Category III: Efficient and Effective Use of Resources**  
**Grade 2009: B      Grade 2010: C★**

*Efficient and Effective Use of Resources* includes: arrests per officer; rate of reports to arrests; successful prosecutions; speedy trials; and alternatives to incarceration. Data is not collected or reported to measure the number of criminal cases not being investigated or filed due to lack of resources.

○ Arrests per Officer.

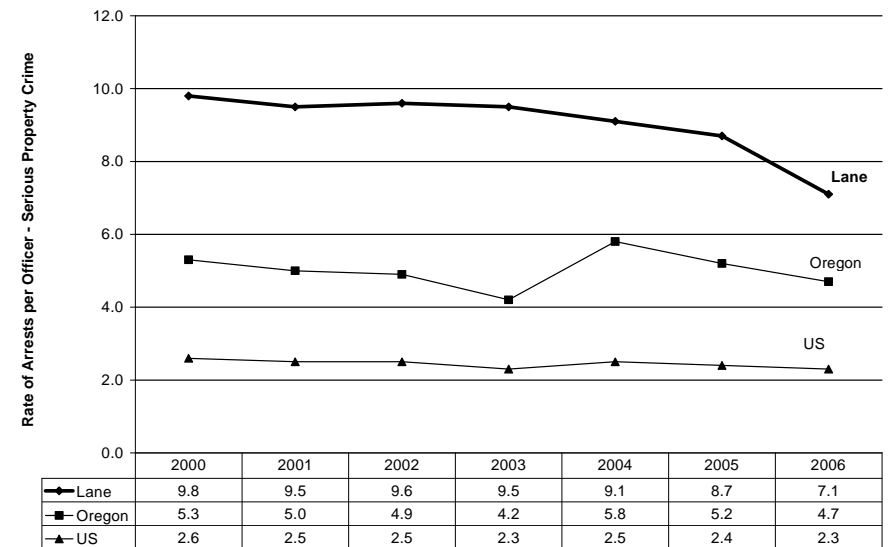
★ Figure 3.1 Rate of Arrests per Officer  
Violent Crime



Source: Lane and Oregon – Law Enforcement Data System, Uniform Crime Report  
 Source: US – FBI, Law Enforcement Officers Killed and Assaulted;  
 Easy Access to FBI Arrest Statistics

**Grade 2009: B-      Grade 2010: B-**

★ Figure 3.2 Rate of Arrests per Officer  
Property Crime

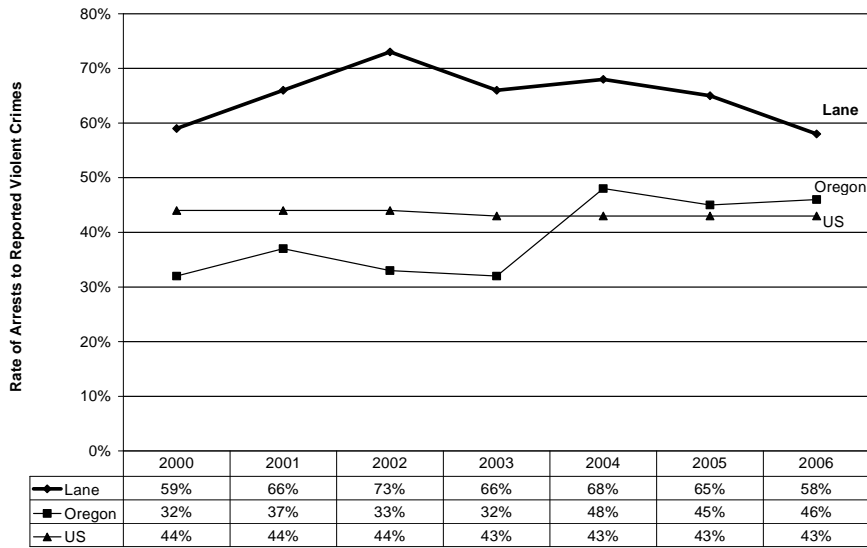


Source: Lane and Oregon – Law Enforcement Data System, Uniform Crime Report  
 Source: US – FBI, Law Enforcement Officers Killed and Assaulted;  
 Easy Access to FBI Arrest Statistics

**Grade 2009: B      Grade 2010: B**

○ Arrests to Reports.

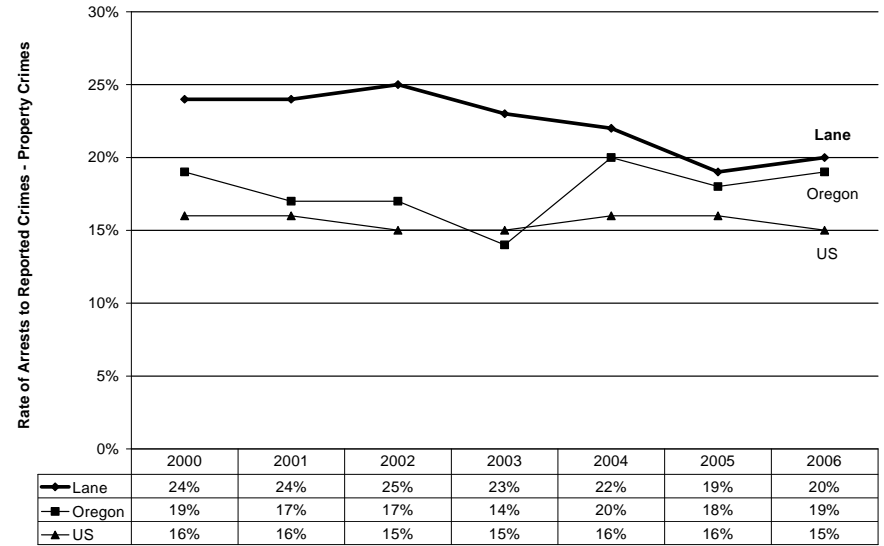
★Figure 3.3 Rate of Arrests to Reports for Violent Crimes



Sources: FBI, *Crime in the United States, 2003*; *Easy Access to FBI Arrest Statistics*

Grade 2009: A-      Grade 2010: C-★

★Figure 3.4 Rate of Arrests to Reports for Property Crimes

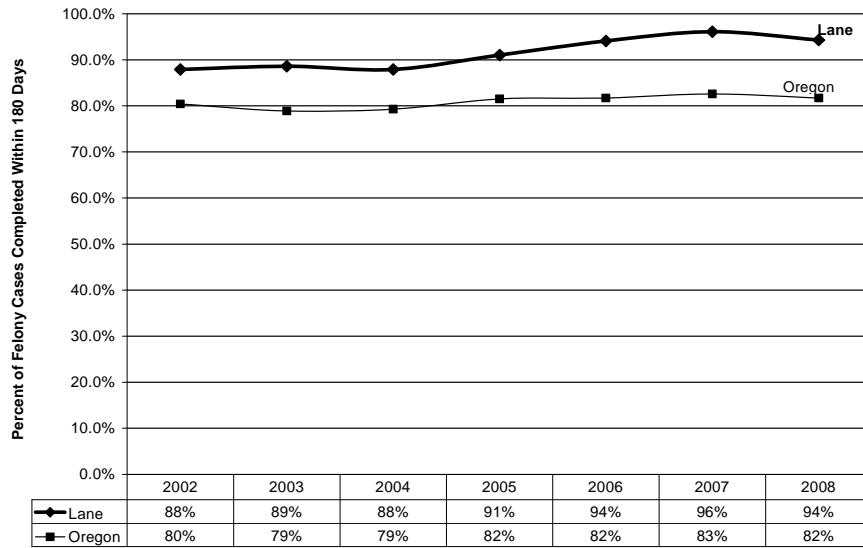


Sources: FBI, *Crime in the United States, 2003*; *Easy Access to FBI Arrest Statistics*

Grade 2009: B-      Grade 2010: C★

○ Speedy Trials.

★ Figure 3.5 Percent of State Court Felony Cases Completed Within 180 Days

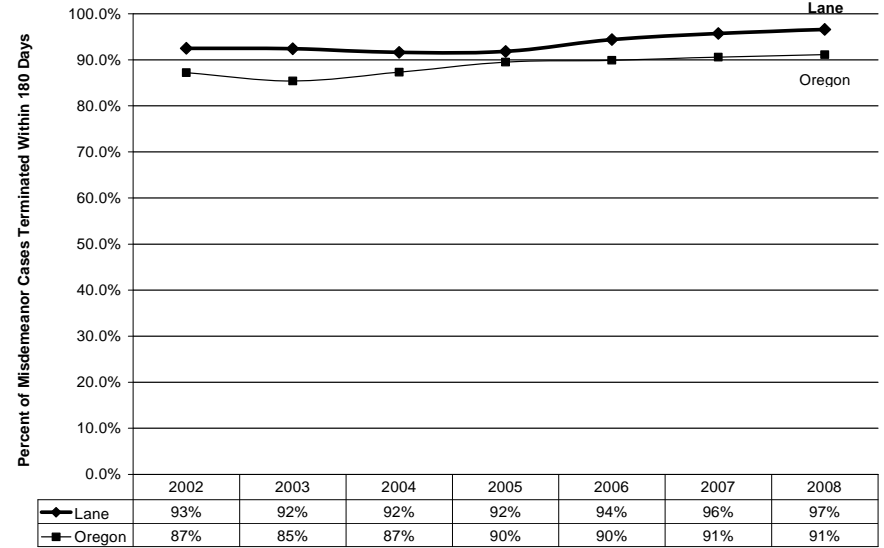


**Note:** Oregon goal is 98%.

Source: Oregon Circuit Court

Grade 2009: B+      Grade 2010: B-★

★ Figure 3.6 Percent of State Court Misdemeanor Cases Completed Within 180 Days



**Note:** Oregon goal is 98%.

Source: Oregon Circuit Court

Grade 2009: C+      Grade 2010: B★

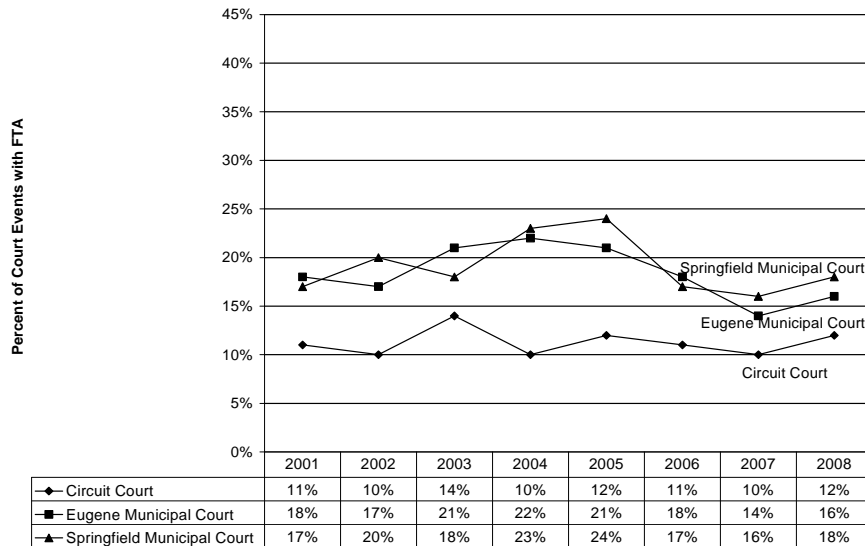


**Category IV: Justice and Accountability**  
**Grade 2009: C-      Grade 2010: C-**

**Justice and Accountability** includes: failure to appear; failures on supervision; Driving Under the Influence of Intoxicants enforcement; and average sentence and supervision length.

- Failure to Appear (FTA).

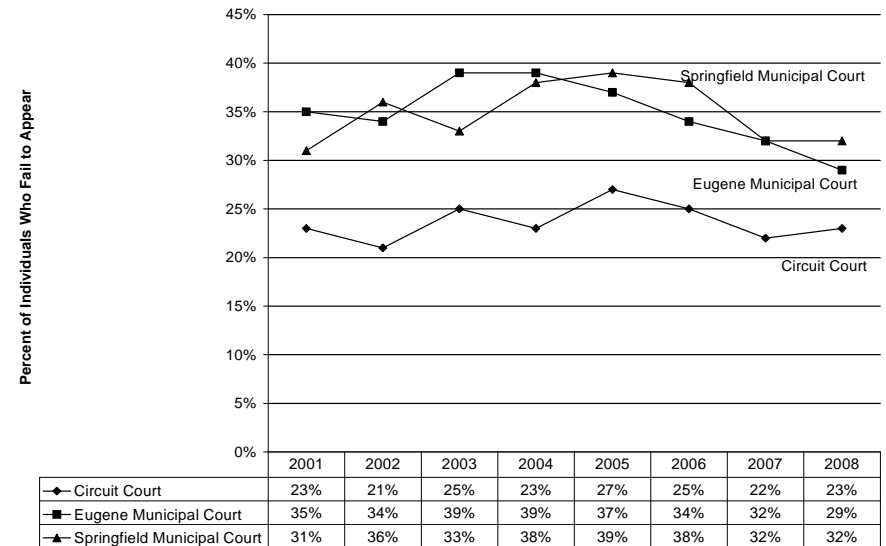
★ **Figure 4.1 Percent of Court Events Where Defendant Fail To Appear**



Source: PCAIRS

**Grade 2009: D+      Grade 2010: D+★**

★ **Figure 4.2 Percent of Individuals Who Fail To Appear**

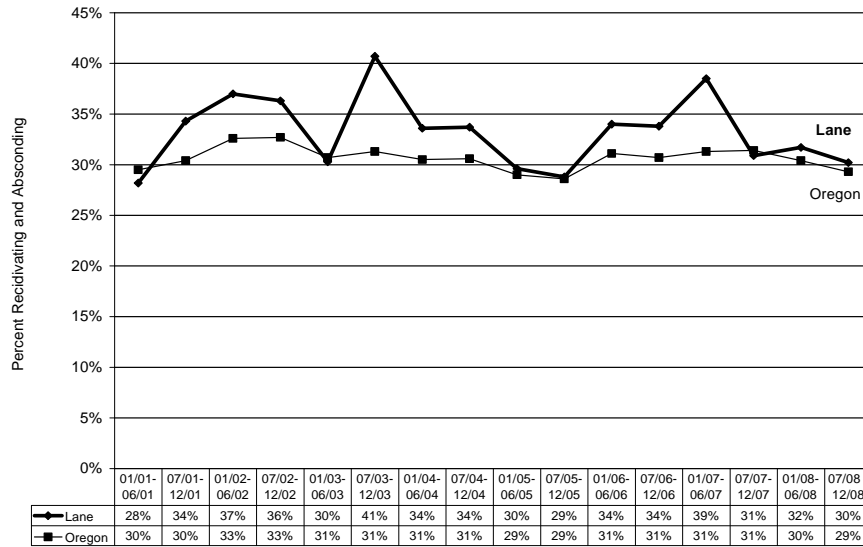


Source: PCAIRS

**Grade 2009: F      Grade 2010: F**

○ Failures on Supervision.

★Figure 4.3 Three Year Re-offense Rate for Felony Offenders on Parole/Post-Prison Supervision

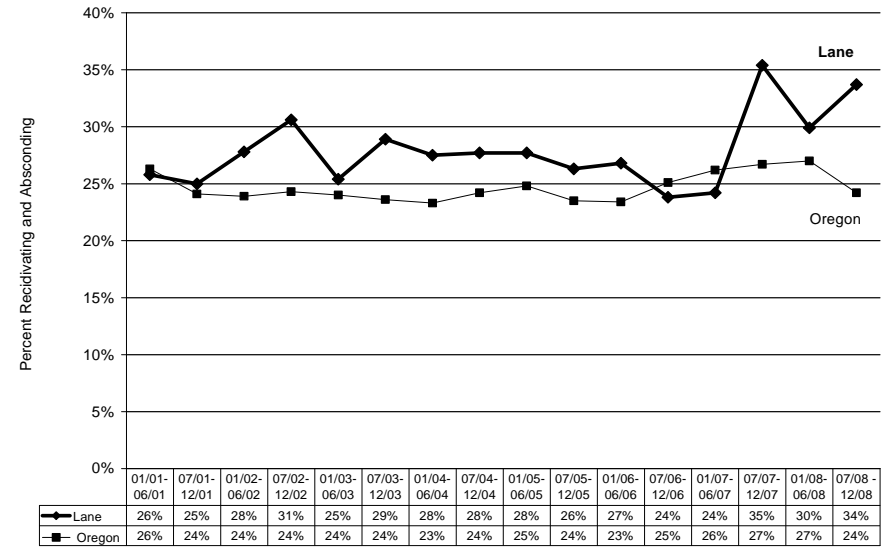


**Note:** The Oregon goal is no more than 31%.

Source: Oregon Department of Corrections

Grade 2009: C-      Grade 2010: C+★

★Figure 4.4 Three Year Re-offense Rate for Felony Offenders on Probation Supervision



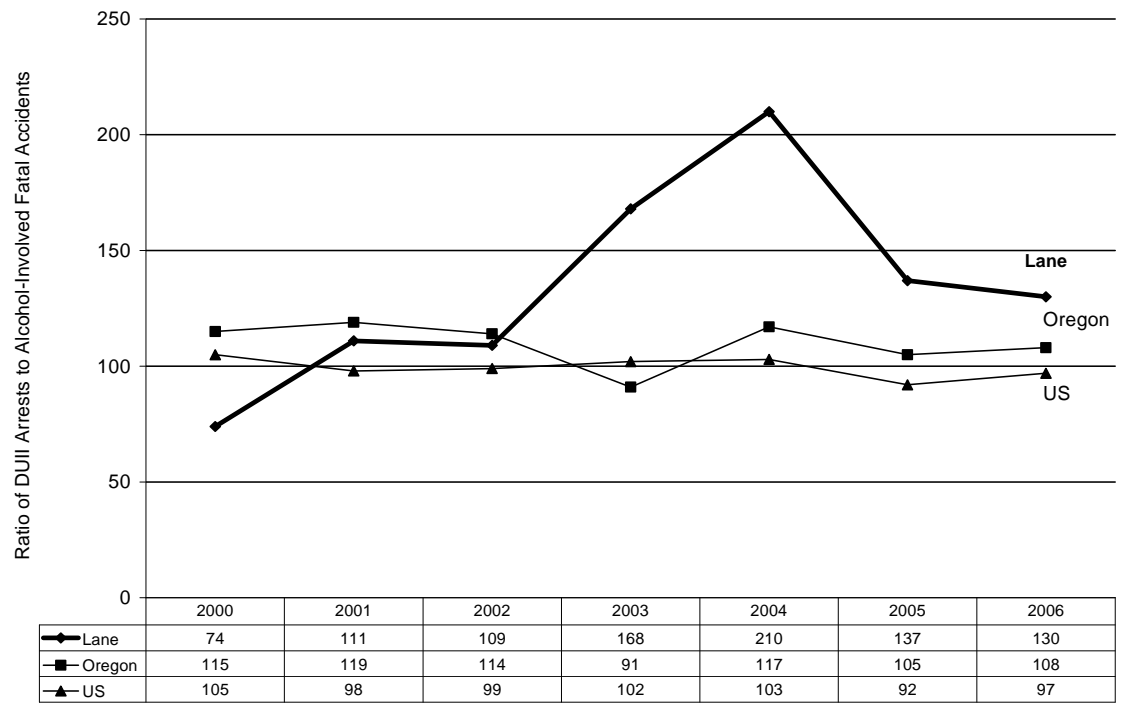
**Note:** The Oregon goal is no more than 23%.

Source: Oregon Department of Corrections

Grade 2009: D-      Grade 2010: D-

- **Driving Under the Influence of Intoxicants (DUII) Enforcement.** The DUII Enforcement Index is the ratio of the number of DUII arrests to the number of drivers in fatal crashes with any level of blood-alcohol concentration.

★Figure 4.5 DUII Enforcement Index



Source: DUII Arrests: Easy Access to FBI Arrest Statistics

Source: Drivers with any BAC in Fatal Accidents: US DOT, National Highway Traffic Safety Administration, Fatality Analysis Reporting System

Grade 2009: A-      Grade 2010: A-



**Report Card Data: Part B – Juvenile Data**

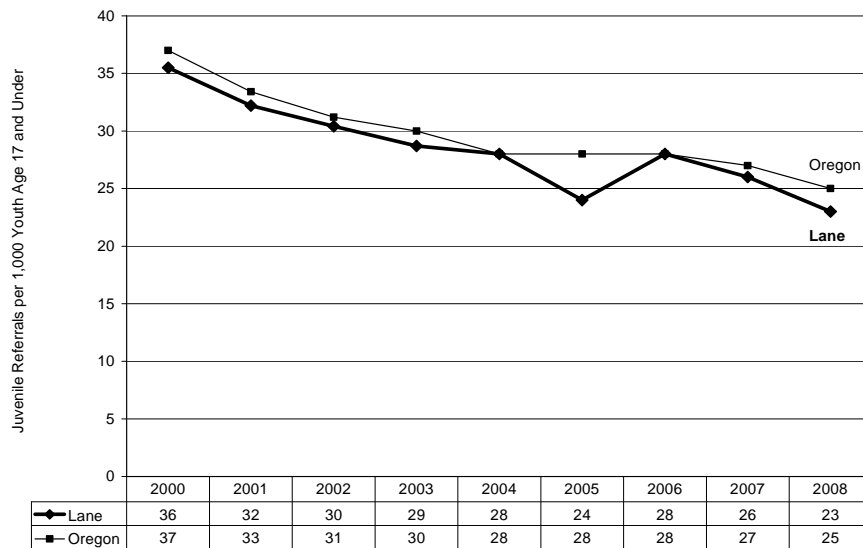


**Category I: Crime and Safety**  
**Grade 2009: D+      Grade 2010: D+**

*Crime and Safety* includes: juvenile referrals and arrests; dropouts; and drug and alcohol abuse.

o Juvenile Referrals and Arrests.

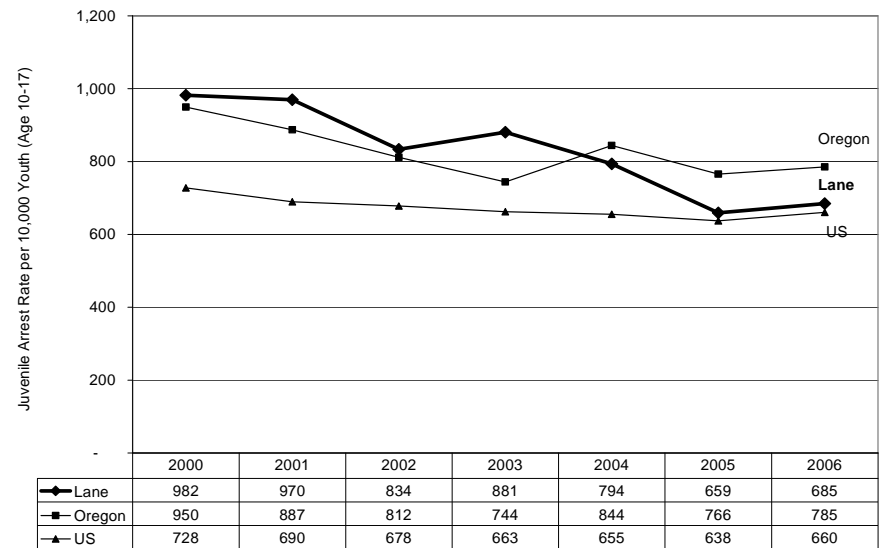
★ **Figure 1.1 Juvenile Rate of Criminal Referral to Juvenile Services per 1,000 Youth Age 17 and Under**



Source: Lane County Department of Youth Services, Juvenile Justice Data 2003

**Grade 2009: C-      Grade 2010: C+★**

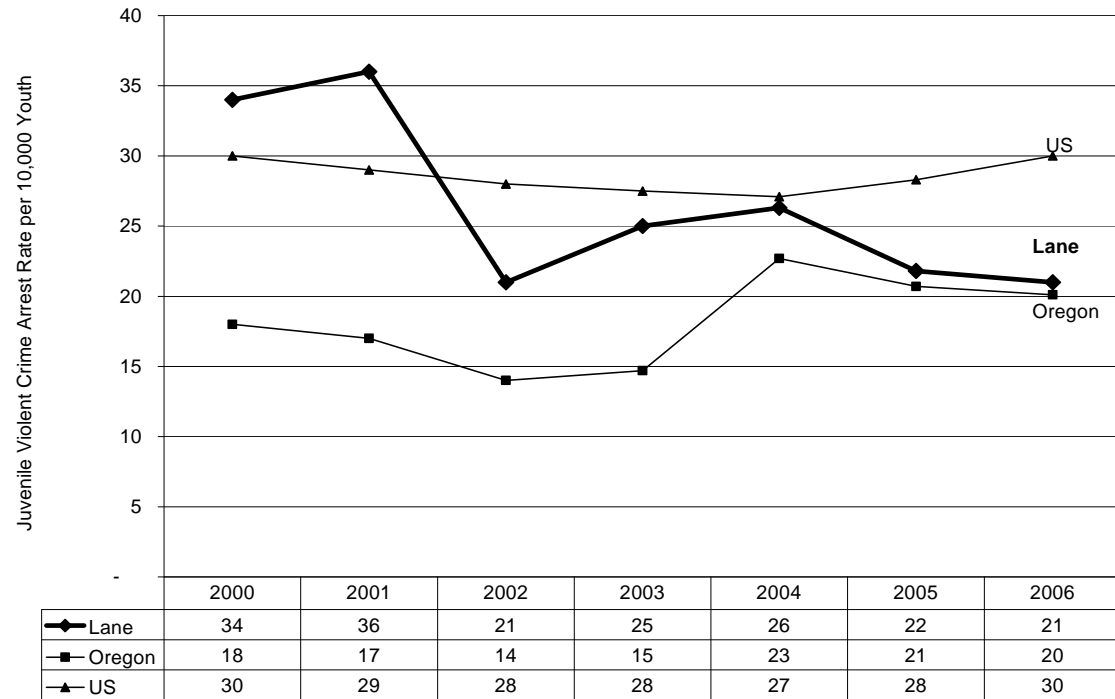
★ **Figure 1.2 Juvenile Arrest Rate per 10,000 Youth Age 10-17**



Source: Easy Access to FBI Arrest Statistics

**Grade 2009: B+      Grade 2010: B+**

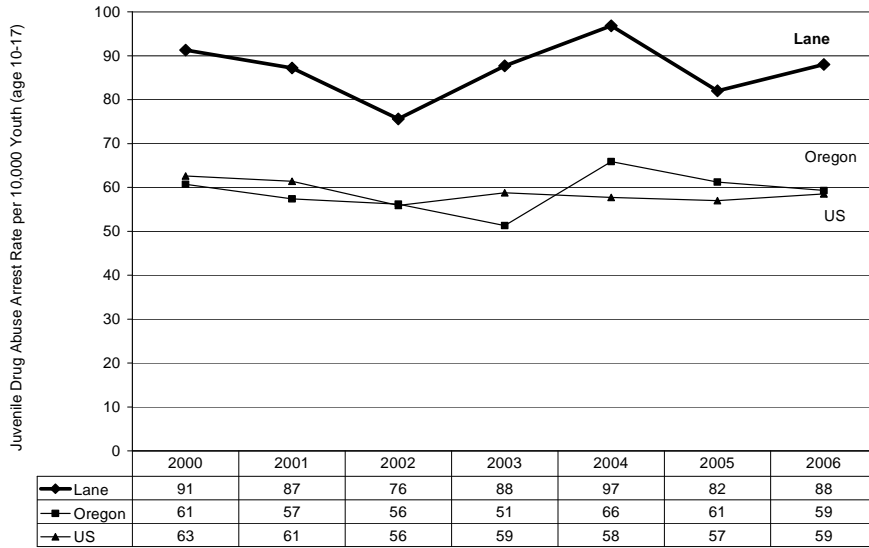
★Figure 1.3 Juvenile Violent Crime Arrest Rate per 10,000 Youth



Source: Easy Access to FBI Arrest Statistics

Grade 2009: C+      Grade 2010: B★

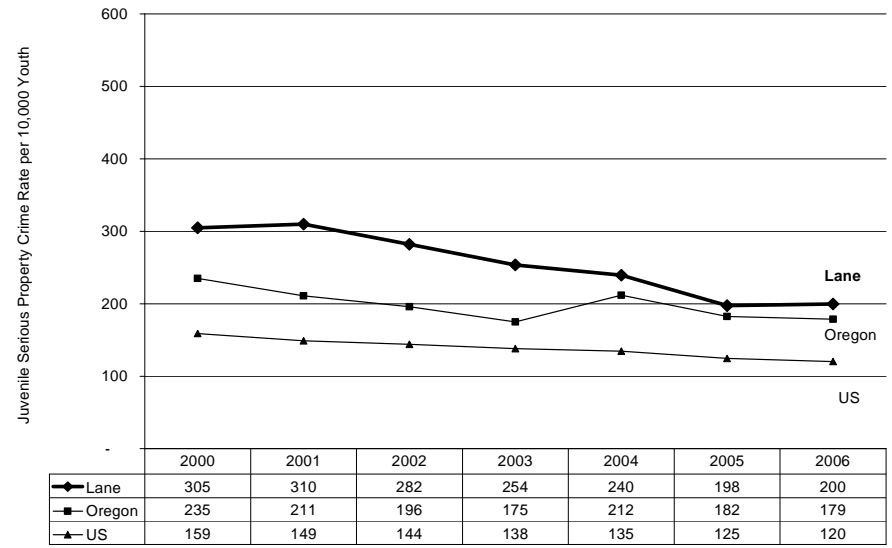
★Figure 1.4 Juvenile Drug Abuse Arrest Rate per 10,000 Youth



Source: Easy Access to FBI Arrest Statistics

Grade 2009: F      Grade 2010: F

★Figure 1.5 Juvenile Property Crime Arrest Rate per 10,000 Youth

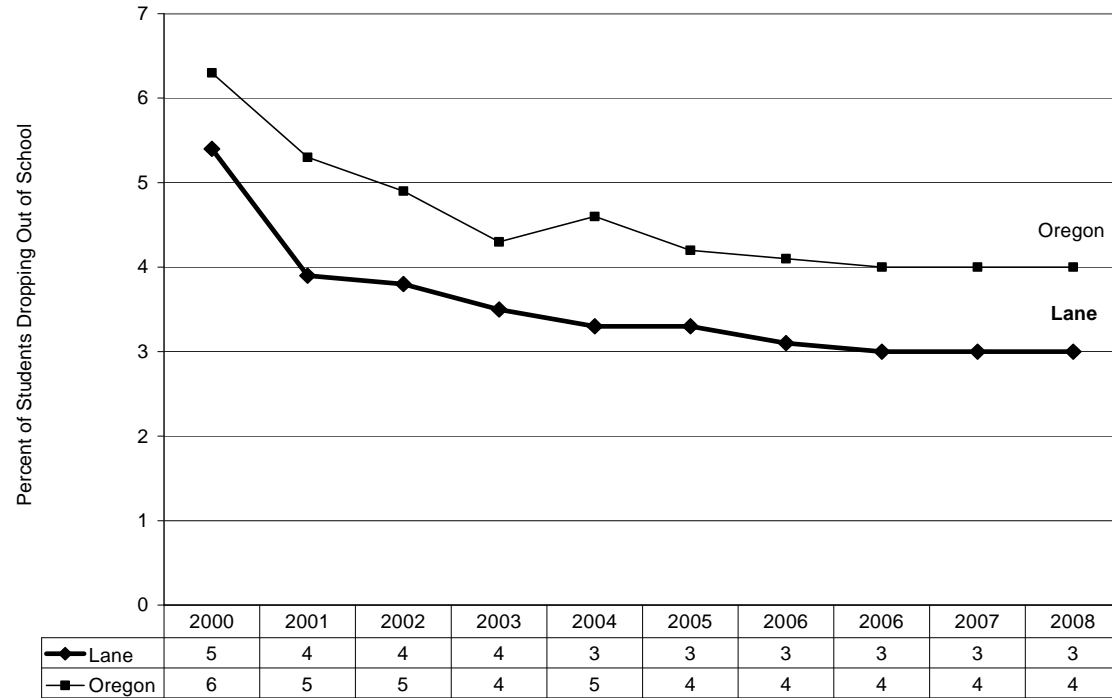


Source: Easy Access to FBI Arrest Statistics

Grade 2009: C      Grade 2010: C

- **Dropouts.** Lane County's Dropout rate is lower than the state's and the nation's.

★ **Figure 1.6 Percent of Students Dropping Out of School**



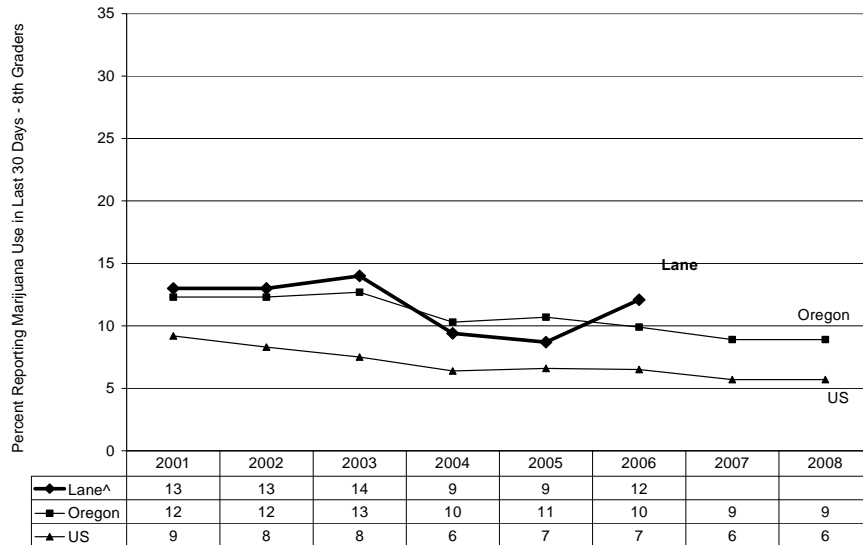
**Note:** Prior to 1997, students receiving a GED were counted as drop-outs

Source: Lane and Oregon - Oregon Department of Education, Early Leave Report. As cited by Oregon Progress Board, Oregon Benchmarks 2003 County Data Book

**Grade 2009: B+**      **Grade 2010: C-★**

○ **Drug and Alcohol Abuse.** Lane County exceeded the state and US rates for 2001-03 for percent of 8<sup>th</sup> graders reporting marijuana use in the last 30 days and still exceeds the US rate. At the 11<sup>th</sup> grade level, Lane exceeded both state and US rates for 2003 but the Lane, State, and US rates were virtually identical for 2001 and 2005. This is self report data from the Oregon Healthy Teens Survey.

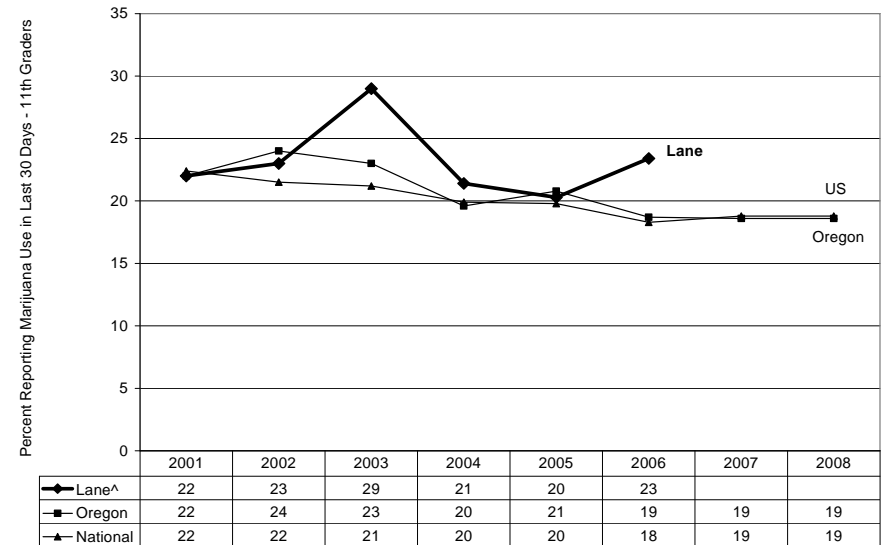
**Figure 1.7 Percent of Juveniles Who Report Marijuana Use in Last 30 Days – 8<sup>th</sup> Grade**



Source: Lane and Oregon – Oregon Healthy Teens Survey  
 Source: US – Monitoring the Future

**Grade 2009: D-      Grade 2010: D-**

**Figure 1.8 Percent of Juveniles Who Report Marijuana Use in Last 30 Days – 11<sup>th</sup> Grade (12<sup>th</sup> Grade US Data)**

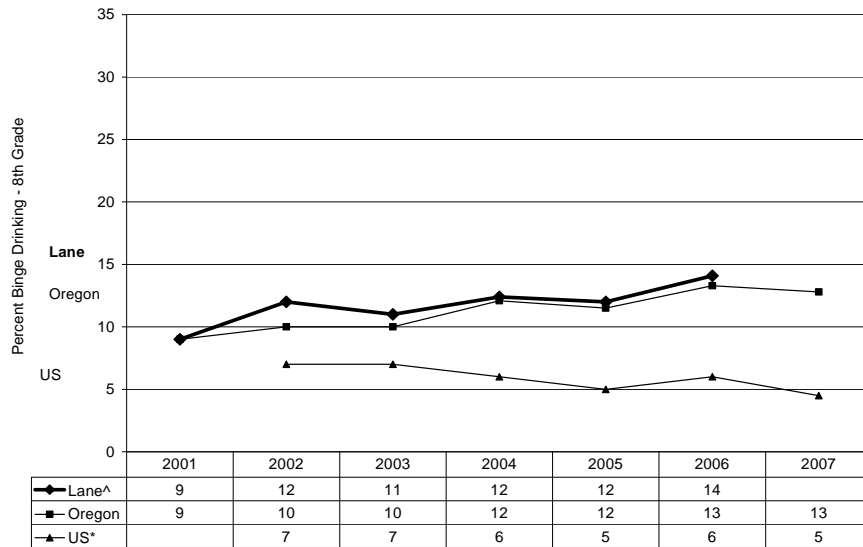


Source: Lane and Oregon – Oregon Healthy Teens Survey  
 Source: US – Monitoring the Future

**Grade 2009: D-      Grade 2010: D-**

Lane County and Oregon exceeds the nation for binge drinking by both 8<sup>th</sup> and 11<sup>th</sup> graders. Binge drinking is defined as having five or more drinks of alcohol within a couple of hours one or more times in the last 30 days.

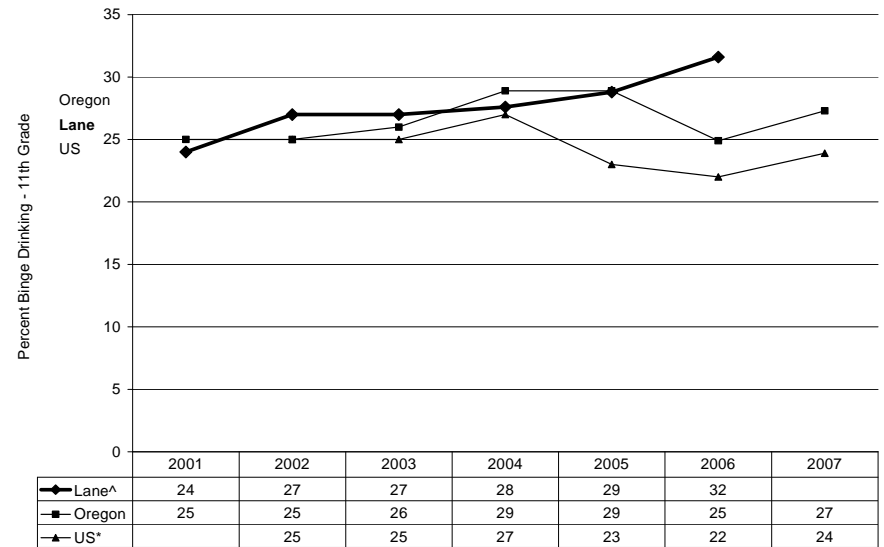
**Figure 1.9 Percent of Juveniles Who Report Binge Drinking in the Last 30 Days – 8<sup>th</sup> Grade**



Source: Lane and Oregon – Oregon Healthy Teens Survey  
 Source: US – US Survey on Drug Use and Health

**Grade 2009: F      Grade 2010: F**

**Figure 1.10 Percent of Juveniles Who Report Binge Drinking in the Last 30 Days – 11<sup>th</sup> Grade**



Source: Lane and Oregon – Oregon Healthy Teens Survey  
 Source: US – US Survey on Drug Use and Health

**Grade 2009: F      Grade 2010: F**

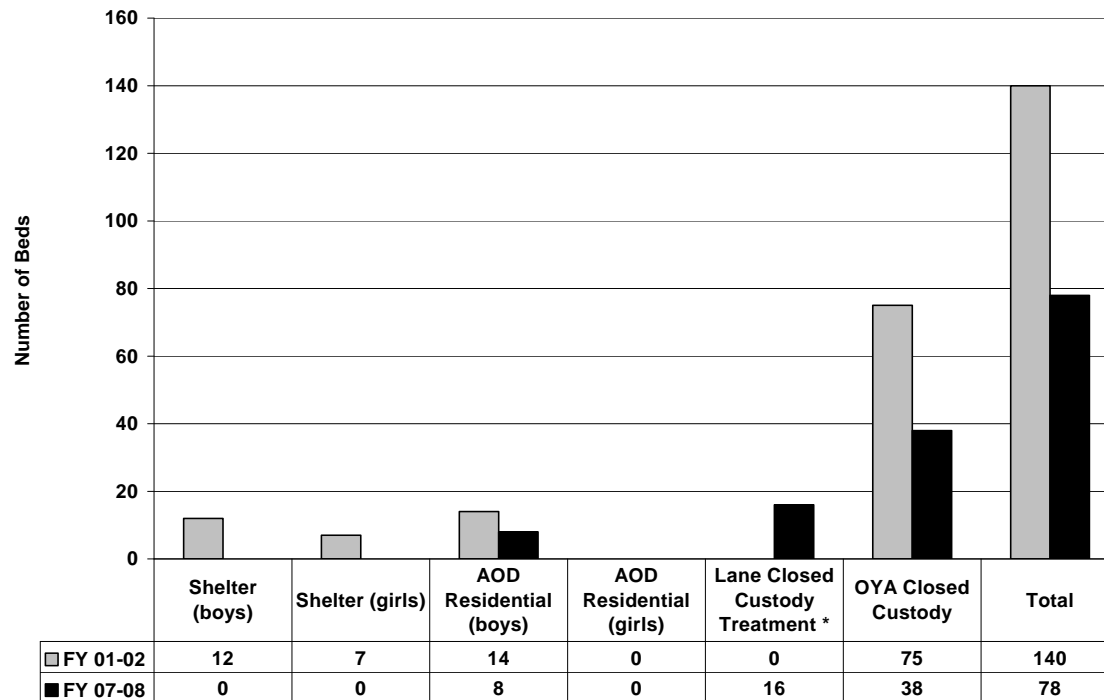
**Category II: Resources and Capacity**

**Grade 2009: F    Grade 2010: F**

*Resources and Capacity* includes juvenile detention capacity.

- Juvenile Detention Capacity.

**★Figure 2.1 Lane County Department of Youth Services Funded Juvenile Bed Resources  
Local Beds and State Beds Allocated to Lane County**



**\*Note:** In 2005-06, 16 detention beds were designated as long-term treatment beds. While this increased treatment options, it reduced available beds for short-term detention.

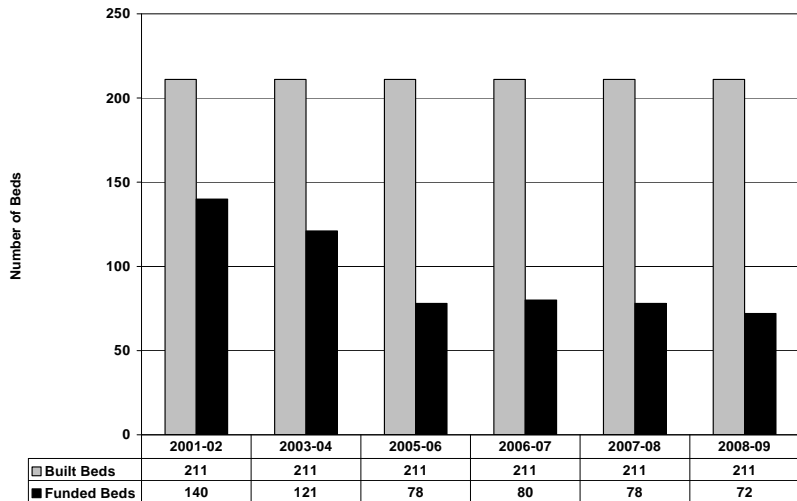
Source: Lane County Department of Youth Services

The juvenile justice system differs in how youth are committed to state secure custody. Unlike the adult criminal justice system that can sentence offenders to prison with no cap/matrix issues, the juvenile justice system is limited to a discretionary bed allowance that the Oregon Youth Authority calculates using a county's youth population count and crime rate. It should be noted that the total number of secure custody youth beds available for the entire state of Oregon is not driven by any scientific method or demand forecast formula. The bed allowance has always been a product of what resources were available instead of actual need.

★Figure 2.2 Built vs. Funded Beds by Facility

Built vs. Funded Beds by Facility	2001-02			2008-09		
	Built Beds	Funded Beds	% Funded	Built Beds	Funded Beds	% Funded
<b>Lane County Resources</b>						
Detention	96	32	33%	80	16	20%
Shelter (boys)	12	12	100%	12	0	0%
Shelter (girls)	7	7	100%	7	0	0%
AOD Residential (boys)	14	14	100%	14	8	57%
AOD Residential (girls)	7	0	0%	7	0	0%
Lane Close Custody Treatment	0	0		16	16	100%
<b>State Resources Available to Lane County</b>						
Oregon Youth Authority Close Custody	75	75	100%	75	32	43%

★Figure 2.3 Built vs. Funded Beds

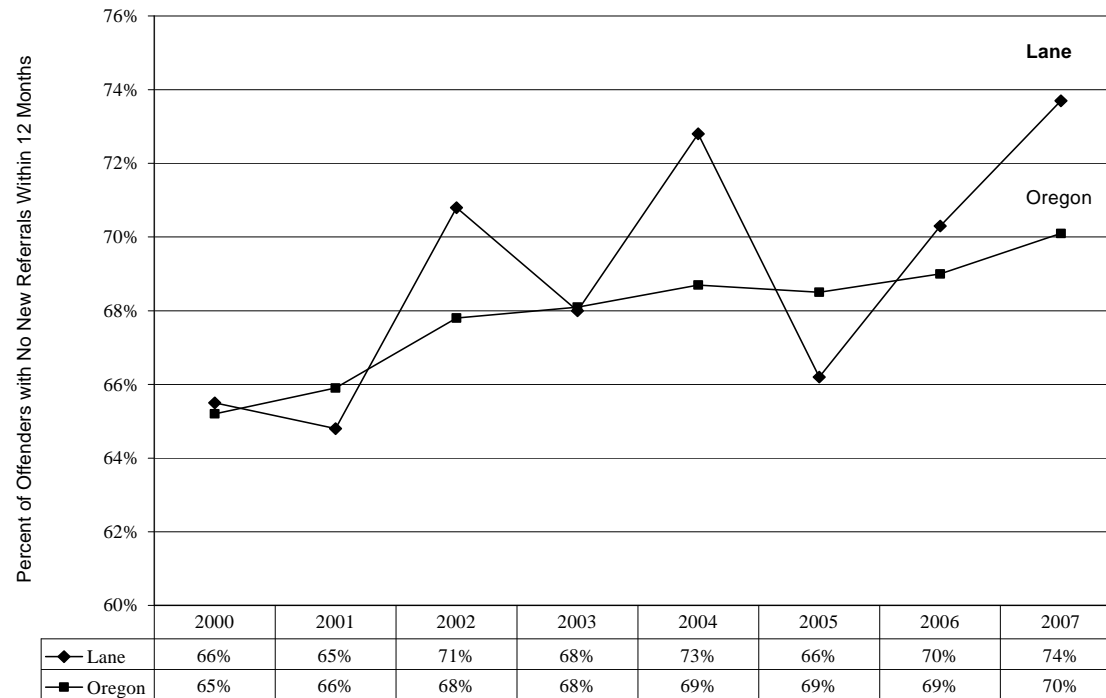


**Category III: Efficient and Effective Use of Resources**  
**Grade 2009: C-      Grade 2010: C+**

*Efficient and Effective Use of Resources* includes: juvenile re-offenses; chronic juvenile offenders; and re-offenses and tracking time.

- o Juvenile Re-offenses.

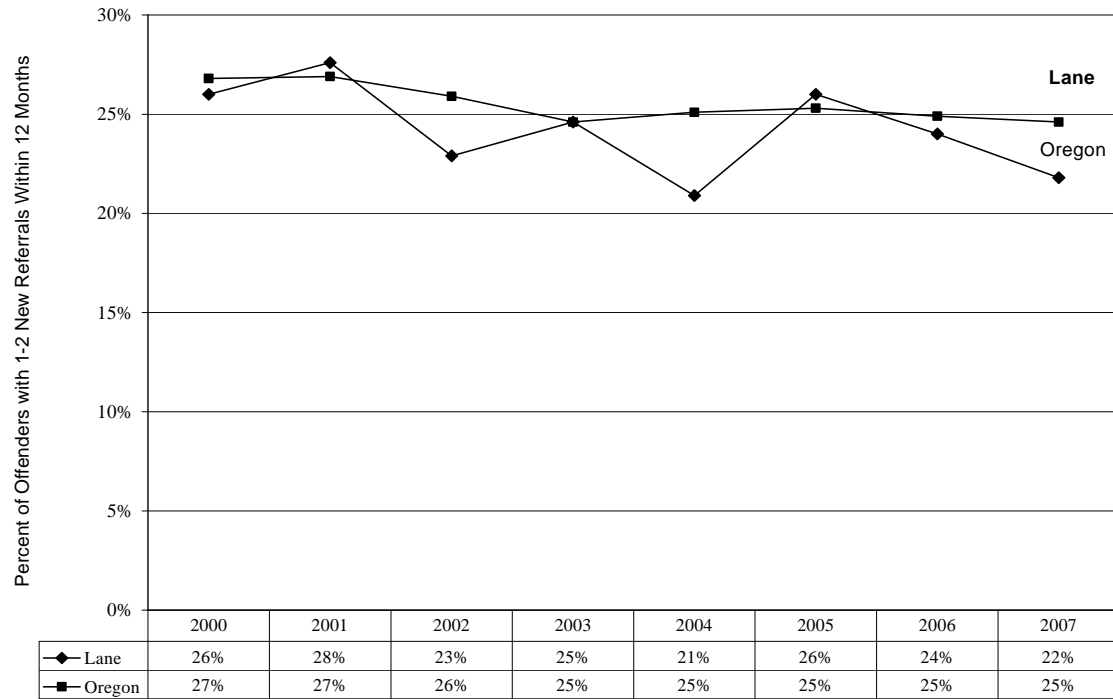
★ **Figure 3.1 Percent of Juvenile Offenders Who Did Not Re-offend Within 12 Months**



Source: Lane County Department of Youth Services

**Grade 2009: C-      Grade 2010: C+**

★ Figure 3.2 Percent of Juvenile Offenders With 1-2 New Referrals Within 12 Months

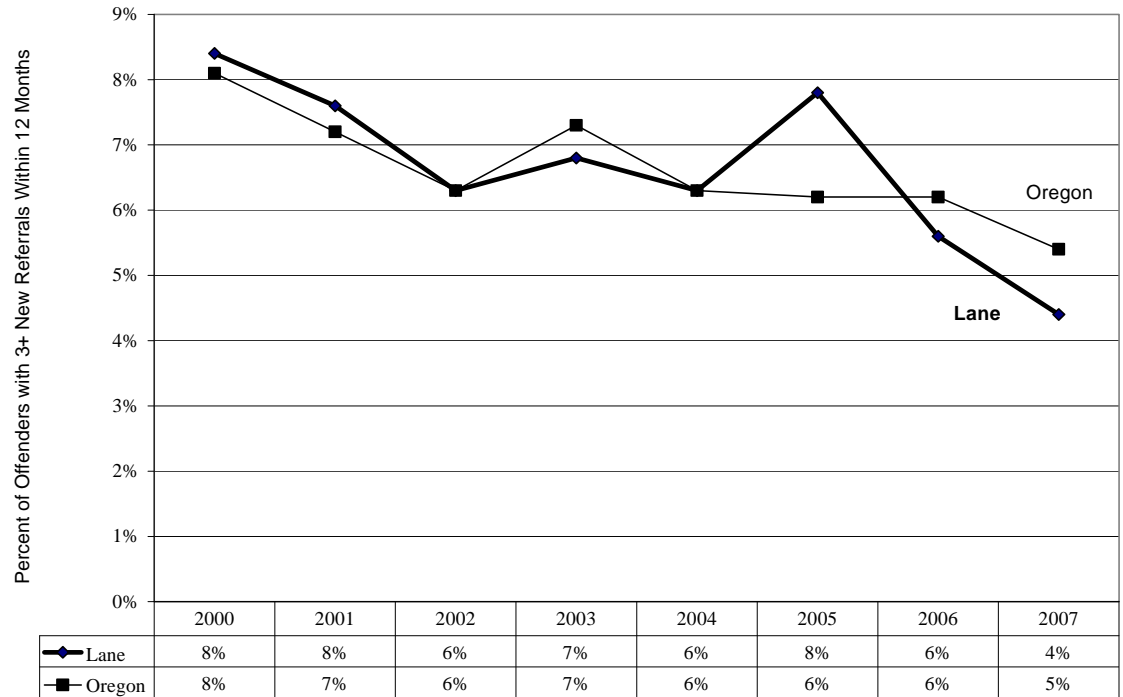


Source: Lane County Department of Youth Services

Grade 2009: C-      Grade 2010: C+★

- **Chronic Juvenile Offenders.** A small group of juvenile offenders become chronic delinquents and commit a majority of new offenses. Chronic offenders commit three or more new crimes over a 12-month period.

★**Figure 3.3 Chronic Juvenile Offenders – Those With Three Or More Referrals Within 12 Months**

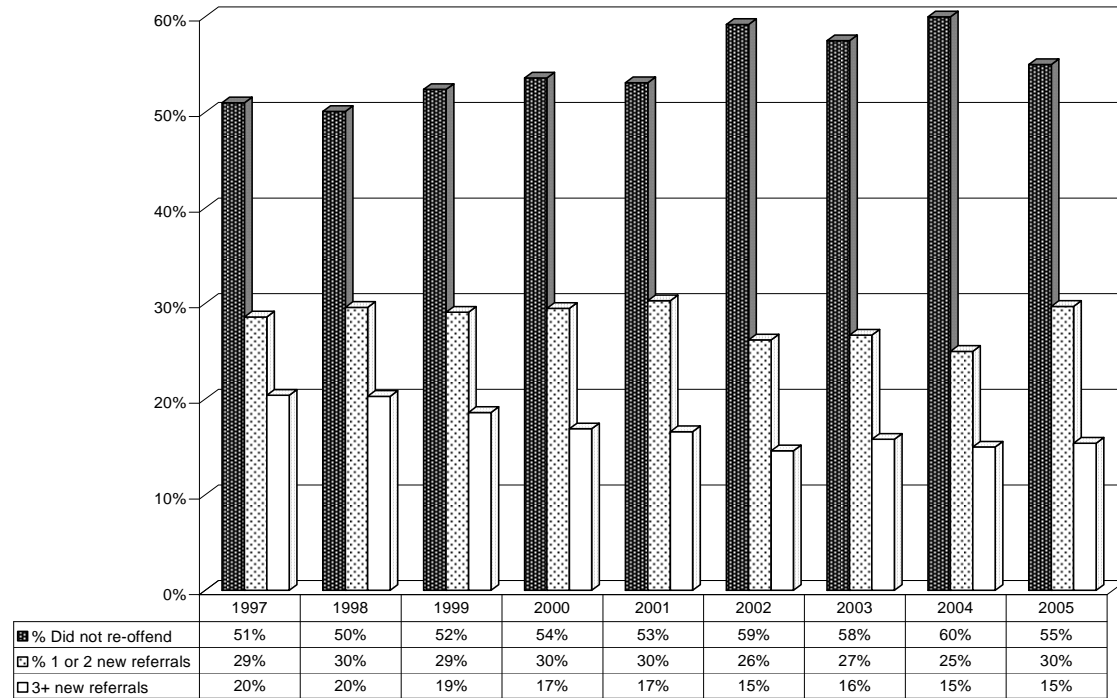


Source: Lane County Department of Youth Services

Grade 2009: C      Grade 2010: B+★

○ Re-offenses and Tracking Time

★ Figure 3.4 Juvenile Re-offenses At 36 Months By Year



Source: Lane County Department of Youth Services

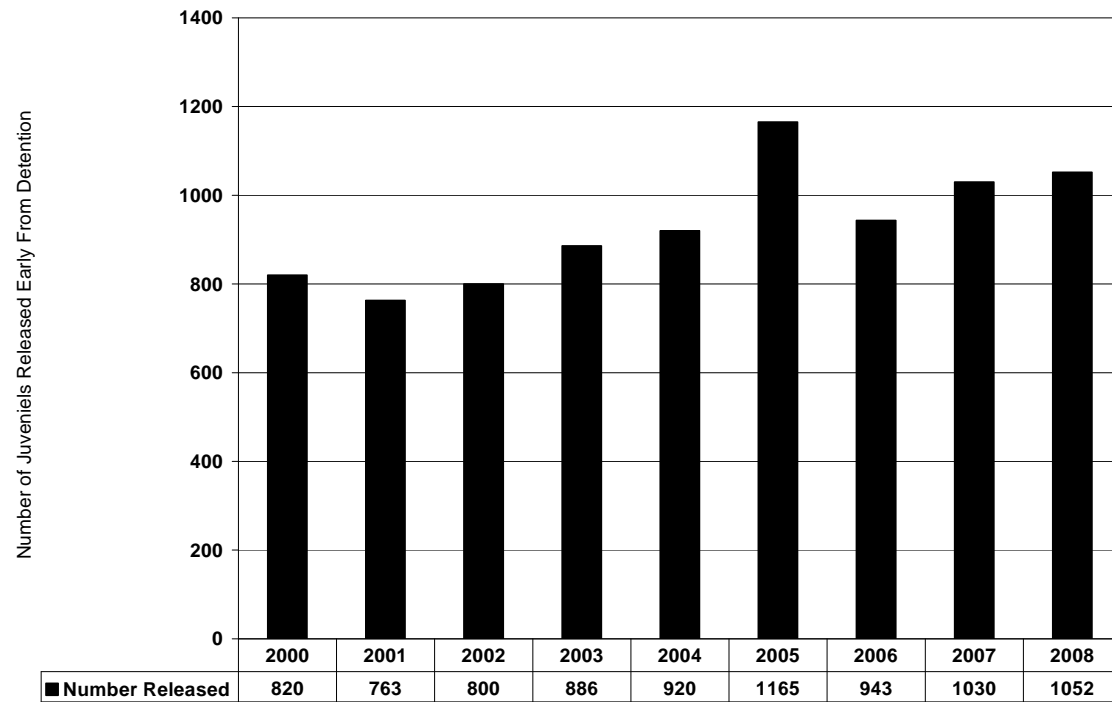
**IV. Justice and Accountability**

Grade 2009: F

Grade 2010: F

- System Capacity

★Figure 4.1 Lane County Juveniles Released From Detention Early



Source: Lane County Department of Youth Services

Grade 2009: F

Grade 2010: F