

REGIONAL FOCUS

Willamette River Open Space Vision

Residents of the Eugene-Springfield area have long treasured the Willamette River for the natural, recreational, and visual qualities it provides in close proximity to the urban environment. The river provides the community with a sense of place and contributes greatly to the quality of life for all who call this area home. LCOG is now leading up a planning effort to create an inspiring long-range open space vision for the Willamette River corridor that will help lead the way for coordinated efforts to further improve this outstanding resource in the coming years and decades. A broad partnership of agencies and organizations is participating in this effort including Eugene, Springfield, The Nature Conservancy, Willamalane Park & Recreation District, Eugene Water & Electric Board, McKenzie River Trust, Metropolitan

Wastewater Management Commission, Willamette River Keeper, and the Coast Fork Willamette, Middle Fork Willamette, and McKenzie Watershed Councils.

Public input and ideas have been collected over the past several months including comments from a workshop attended by nearly 100 people, a survey which received nearly 500 responses, and outreach to several interest groups. This public input will be vital for shaping this open space vision which is scheduled to be completed by the end of 2009. Once finished, the partnership will seek endorsements from local elected officials. For more information on this project, go to www.lcog.org/willamette or contact Jeff Krueger at jkrueger@lcog.org



Aerial view of Willamette River in Eugene

THIS ISSUE

- 2** Director's Desk
- 3** Senior Day at the Lane County Fair
Change in Deferred Comp Carriers
Oregon Savings Growth Plan (OSGP) Advisory Committee
- 4** LCOG Staff Raise over \$1,500 During Relay for Life
Staff Profile - Arlene Lee
- 5** Building Tools and Understanding to Project Eugene's Drinking Water Quality
- 6** A Path System for Coburg
Staff Profile - Petra Schuetz
- 7** Metro Television Production Activities
- 8** 2009 Exemplary Systems in Government (ESIG) Winners Announced
Census Bureau Open House
- 9** LCOG to Receive \$472,000 for Wetland and Riparian Project



George Kloeppel
LCOG EXECUTIVE DIRECTOR

MEMBER AGENCIES

- CITY OF COBURG
- CITY OF COTTAGE GROVE
- CITY OF CRESWELL
- CITY OF EUGENE
- CITY OF FLORENCE
- CITY OF JUNCTION CITY
- CITY OF LOWELL
- CITY OF OAKRIDGE
- CITY OF SPRINGFIELD
- CITY OF VENETA
- CITY OF WESTFIR
- EMERALD PEOPLE'S UTILITY DISTRICT
- EUGENE WATER & ELECTRIC BOARD
- FERN RIDGE LIBRARY DISTRICT
- LANE COMMUNITY COLLEGE
- LANE COUNTY
- LANE EDUCATION SERVICE DISTRICT
- LANE LIBRARY DISTRICT
- LANE TRANSIT DISTRICT
- PORT OF SIUSLAW
- RIVER ROAD PARK & RECREATION DISTRICT
- SCHOOL DISTRICT 19
- SCHOOL DISTRICT 4J
- SCHOOL DISTRICT 52
- SCHOOL DISTRICT 68
- SIUSLAW VALLEY FIRE DISTRICT
- WESTERN LANE AMBULANCE DISTRICT
- WILLAMALANE PARK & RECREATION DISTRICT

Director's Desk

Board of Directors Strategic Planning

I trust that Regional Focus readers have enjoyed a wonderful summer and that, as we all return to our more normal routines, there is a renewed sense of energy and determination to serve the public interest. I want to say a few words about the LCOG Board's long-term strategic planning activity this month. Unfortunately, the publication schedule for this issue requires that my words go on paper before the September 24 session actually happens. I suspect that some mainline journalists write their stories in advance of the event that they are reporting upon, but such a practice does risk doing injustice to the hard news facts. With that caveat, I will keep in general.

The LCOG Board's September Planning Session has been scheduled for some time. The elected officials who provide policy direction for this organization took an initial cut at highlighting critical regional issues last February. But it was recognized at that time that more needed to be done. Last month, all Board members were personally contacted and asked to share their perceptions of the most important or vexing issues confronting their jurisdictions or agencies. The data received became the raw material for the Board's planning work on September 24. Both as a full Board and in small groups, the members will spend concentrated time this month boiling down the information and determining what they, as policy makers, can do to positively impact the quality of life in the region. It is hoped that the process will yield agreement on two or three initiatives that, if pursued, could lead to significant community betterment.

As the Executive Committee has worked with staff in designing the Session, it was clear that a great many issues deserve—perhaps, demand—attention in the public policy arena. However, to “make the cut” in this month's exercise, it was agreed that the topics needed to be multi-jurisdictional in scale and also needed to be well suited for attention by LCOG. It was no one's perception that the COG was the best answer to every issue. But even if major new COG projects are not catalyzed by the Planning Session, the honest exploration of shared problems and opportunities by elected policy makers from across the region is expected to be healthy and informative. We will see what emerges.

OK. That may be all well and good, but tell me again why LCOG is doing this. Those familiar with this 64 year-old agency understand that our portfolio is broad. From the application of cutting-edge technologies to support local governments, to business assistance, and from transportation planning, to senior and disabled services, LCOG has been asked to deliver a diverse array of services. But at its core, this agency was created to provide regional planning—bringing together issues and policy leaders to address issues that cross jurisdictional lines. That was the purpose and expectation when the organization was established, and it remains valid to this day. Finding new—or refining old—solutions to pressing issues, and in so doing, helping local governments operate efficiently and effectively, is the business of the council of governments.



Senior Day at the Lane County Fair

Senior & Disabled Services, a division of Lane Council of Governments, was one of the thirteen information booths at the Lane County Senior Day at the Fair on August 20, 2009. Approximately 1,500 seniors attended the event which featured service information, health screening, entertainment, and a dessert and ice cream social. The food was served by members of the Lane County Commissioners and State Representative Peter DeFazio. Entertainment included music and readings by Ragtime Tillie & Bob, Eugene Gleemen, Still Waters, Memory Tones, Hillbilly Bandy, Red Hat Society and the Old Time Fiddlers.

During the event S&DS staff connected with 446 seniors and disseminated over 598 pieces of information. Pens with the S&DS logo and phone number were a big hit with crowd.

For further information about the event, please contact Patti Little at (541) 682-4137 or plittle@lco.org.



Change in Deferred Comp Carriers



LCOG recently conducted an RFP for deferred compensation services. The goal was to fulfill LCOG's

fiduciary responsibility to provide the best deferred compensation services available to its employees.

The result was the selection of ICMA-RC, a national, not-for-profit corporation that administers retirement plans exclusively for state and local government employers, to replace

the prior providers, Nationwide and VALIC. The option for the staff to select the Oregon Savings Growth Plan (OSGP) was retained.

The LCOG employees will receive improved services in the following ways: ICMA-RC has lower overall administrative and investment fees than both Nationwide and VALIC, offers an annual individual session with a certified financial planner, eliminates the five year withdrawal period for fixed accounts, provides the option of a Roth IRA, and includes an excellent service representative to provide better service to individuals.

Oregon Savings Growth Plan (OSGP) Advisory Committee

Bob Swank, Associate Director of Lane Council of Governments has been invited to join Oregon Savings Growth Plan (OSGP) Advisory Committee. Bob is a 35 year veteran with LCOG and a proponent of OSGP. He is interested in contributing the participants' perspective to the OSGP administration.



STAFF PROFILE



ARLENE LEE

Eligibility Specialist
Senior & Disabled Services

Arlene has worked for Senior and Disabled Services since 1999. Since 2004, she has worked in the Eligibility Specialist Unit as an Eligibility Specialist in Eugene and Oakridge. During her time in the Oakridge office, her caseload duties include approximately 300 clients. She travels from Eugene two days per month to provide assistance to the seniors and disabled persons residing in Oakridge and surrounding areas. Arlene spends her time problem-solving, assisting with applications, and processes a high volume of intakes per day. Arlene enjoys the relationship she has built with the Oakridge clientele.

See **ARLENE LEE** page 5

LCOG Staff Raise Over \$1,500 During Relay for Life

The American Cancer Society Relay For Life, a 24 hour event, gives a chance to honor those who have battled cancer, remember loved ones lost, and fight back against the disease. At the Eugene/Springfield Relay, teams of people camp out at Lane Community College and take turns walking or running around the track. At night, the track is brightened by the glow of thousands of illuminated bags called luminaria, each bearing the name of someone who has battled cancer. Over 40 luminaria were decorated by Lane Council of Governments/Senior and Disabled Services staff (and family and friends) and displayed at the event. Over 20 staff donated their time to walk around the LCC track from noon July 24 to noon July 25 in tribute to co-workers, clients, friends, and family who have been affected by the disease. LCOG/S&DS staff collectively raised over \$1500 through donations, in-house bake sales during lunch, and

luminaria. Participant and staff member Kelly Garrick says "To me, I look forward to the Relay all year. The giving, the generosity of people, the emotions, the experience of all these people who have had cancer gives me pride, and belief in miracles. To have my husband as a survivor there is special."

Staff who participated on the LCOG/S&DS walking team included Terri Dickinson, Dave Wilkins, Barbara Jaye, Carrie Lynn Perry, Nancy Moen, Lorri Hoffman-Cook, Rosemary Troup, Gloria Olivares, Lynn Boone, Brooke Emery, Kelly Garrick, Colene Doll, Bob Swank, Katie Gallagher, Vicki Wright, Jody Cline, Suzy Cole, Jo Ann Coker, Pat Franck, Debbie Smith-Tracy, and Kelly Lynch.

List does not include the many family members and friends who walked, nor does it include the bakers who made homemade goodies for our bake sales.

Rosemary Troup, Rex Garrick, Sigrid Kuhs, Terri Dickinson in the survivor walk



From **ARLENE LEE** page 4

Building Tools and Understanding to Protect Eugene's Drinking Water Quality

Since 2002, LCOG has assisted Eugene Water and Electric Board's drinking water source protection program in their effort to protect the McKenzie River watershed as Eugene's sole source of drinking water. LCOG's Applied GIS and Data Services staff provide water resources analysis, data management, GIS, and hydrological modeling services to EWEB on a contractual basis. We are currently in the process of implementing a set of water quantity and quality models to help EWEB answer important questions about how water quality might change in the future as well as where to best focus their monitoring efforts in order to identify potential water quality problems early on. In order to develop these tools, a good understanding of the McKenzie River is needed. This summer EWEB

and LCOG teamed up with the University of Oregon's Geography Department in order to gather detailed data on the channel configuration of the McKenzie River. Suzanne Walther, a PhD student in fluvial geomorphology, worked with EWEB and LCOG to coordinate field data collection with high resolution aerial photography flights. The information gathered will be combined with recently acquired LiDAR ground surface mapping data in order to build a highly detailed hydraulic model of the McKenzie River from Leaburg Reservoir to EWEB's drinking water intake at Hayden Bridge. For more information on this project, please contact Bob DenOuden at (541) 682-6516 or bdenouden@lcog.org

Prior to working in the Eligibility Specialist Unit, Arlene worked as a receptionist for Senior and Disabled Services. After a few short months, she was promoted to Case Aid to assist a team of case managers. In this position, Arlene transported recipients to meet foster home providers and view surroundings for foster home placements, tracked and processed paperwork for ongoing cases, issued contracts to client employed providers and assisted in processing year end changes.

Arlene enjoys helping people and she is encouraged to see that the programs have helped people improve their quality of life. Arlene can be reached at (541) 682-2496 or alee@lcog.org.



Suzanne Walther, U of O Geography PhD candidate and LCOG intern, deploys sampling equipment along the McKenzie River



STAFF PROFILE



PETRA SCHUETZ

Associate Transportation Planner

Petra Schuetz has worked as a planner at Lane Council of Governments since 2004. She specializes both in land use and transportation planning. Petra has been the Planning Director for Coburg for the last four years where she serves in both current and long-range planning capacities. She also works within the Metropolitan Planning Organization (MPO), concentrating on projects related to transportation demand management.

Petra received her B.A. in Political Philosophy at Willamette University. She completed graduate work at Portland State University in Urban and Regional Planning with an emphasis in Community Development. Petra began her career near Santa Cruz, CA where she focused on historic preservation.

See **PETRA SCHUETZ** page 7

A Path System for Coburg

The City of Coburg recently completed and adopted an important refinement to their Parks and Open Space Master Plan called the Coburg Loop Implementation Strategy (Coburg Loop). The Coburg Loop—the first of its kind in Coburg—provides a vision, design, and funding opportunities for a 10-foot-wide path system in and around the City. The Coburg Loop also provides a system of “bike boulevards” through the city that connect different sections of the path system. The project was funded through the Transportation Growth Management Program (TGM), a joint program of the Oregon Department of Transportation (ODOT) and the Oregon Department of Land Conservation and Development (DLCD). This TGM grant was financed, in part, by federal Safe, Accountable, Flexible, Efficient Transportation Equity Act: A Legacy for Users (SAFETEA-LU), local government, and State of Oregon funds. The City of Coburg hired Lane Council of Governments as their consultant for the project.

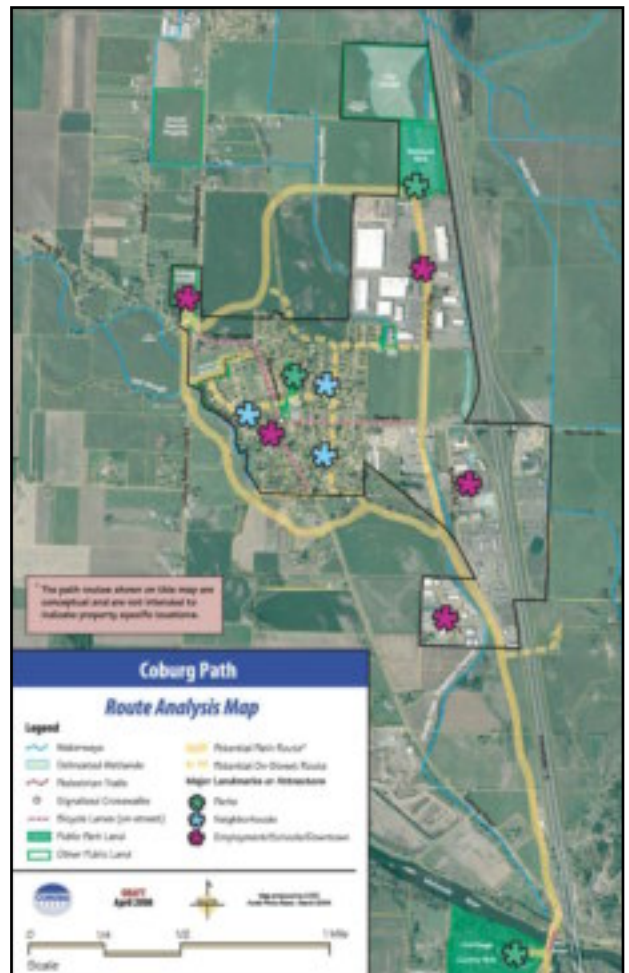
The creation of the Coburg Loop development process was guided by wide-ranging public process with direction from the Citizen Advisory Committee, Technical Advisory Committee, the TGM Program, and the public. It is most closely aligned with the Coburg Transportation System Plan and the Coburg Parks and Open Space Master Plan. The Coburg Loop plan aimed to accomplish the following:

- Path connectivity and functionality
- Path safety
- Consistency between path use, land use, and future development

- Promotion of intergovernmental coordination, integrity, and interest
- Promotion of public health by merging recreation and transportation

During the development of the Coburg Loop significant effort was devoted to the creation of a vision that is unique to Coburg. Key to this vision is the retention and celebration of the rural character of the community and the scenic quality of the agricultural and natural lands that surround it. The path will provide an exceptional user experience with amenities along the way including informational signage on the history of Coburg and surrounding area; maps and directional signage; benches; mile markers; and views of the

See **PATH** page 9



Metro Television Production Activities

Metro Television continues to produce monthly programs for the City of Eugene and Lane County describing services they provide to the community. "Working for You" produced for Lane County has completed the first 12 programs and "Working City", produced for the City of Eugene completed the 60th show capping five years of production. Both programs are designed to educate residents on the wide range of services that are provided by local governments. In addition to being shown on MetroTV (Comcast Cable 21) on the Metro Television website (www.MetroTV.org) "Working For You" shows are available on the County internet site and are distributed to libraries and school districts throughout the county.

Metro Television also has recently produced a Eugene Police Recruitment commercial that shows individuals enjoying activities such as running, martial arts, biking, drawing, and others; followed by the person "morphing" to an officer in uniform doing that activity while on duty. The idea for the "Prevention Convention" PSA was developed by the Police Public Information Officer and Metro TV staff.

Metro staff also produced an overview of the Eugene Public Works Department. This production will be incorporated into the 4J school curriculum for grade school and Middle school aged



youth. The production used local youth actors as the hosts, and incorporated a lot of computer generated backgrounds and effects that will appeal to these age groups. The Public Works Public Information Officer created the concept and Metro TV staff created the animated effects and graphics to show the breadth and depth of services provided by this department to residents.

Eugene City Council and Lane County Commissioner meetings are covered by Metro Television, as they have been since 1986. New this year, is the addition of the Metropolitan Policy Committee meetings held in locations in Springfield, Lane County and Eugene. Metro Television now has the ability to set up a remote production site for audio/video switching and recording. These meetings are replayed on Metro Television as well as being archived on the LCOG website. Community Outreach meetings of the Board of County Commissioners are now being recorded and replayed on MetroTV as well as archived on the county website. Past Outreach meetings have occurred in Florence, Mt. Pisgah Arboretum, Sacred Heart Hospital, Centro LatinoAmericano, the University of Oregon, and Junction City. The 2.5 FTE staff of Metro television are very busy with all this production activity and very proud of the quality products that are being produced. For more information about Metro Television, please contact Robert Lewis at (541) 682-3799 rlewis@lcog.org.

Utilizing field production equipment, Video Analyst Ken Warren directs the taping of a Metropolitan Planning Commission meeting in Springfield.

Petra has worked on a diverse range of projects over the last five years including: program evaluation; demographic analysis; systems development charges sensitivity analysis; grant writing; coordination of the Metropolitan Planning Organization website applications; public outreach management for regional transportation construction projects and the KeepUsMoving.info website; and managing various Transportation Growth Management (TGM) grants for small cities.

Petra's most recent projects include management of the Coburg Loop Multimodal Path Implementation Strategy (TGM), Highway 99 Junction City Refinement Plan (TGM), Coburg/I-5 Interchange Area Management Plan (IAMP); and Coburg Urbanization Study Update. She is also the liaison to point2point solutions (formerly Commuter Solutions), the regional transportation options program housed at Lane Transit District and LCOG's Employee Transportation Coordinator.

Petra can be reached at (541) 682-3639 or pschuetz@lcog.org.

2009 Exemplary Systems in Government (ESIG) Winners Announced



View the RLID website at <http://v2.rlid.org/>

The Urban and Regional Information Systems Association (URISA) have announced their 2009 ESIG award winners. URISA's ESIG Awards recognize exceptional

information systems technology in a multi-department environment as part of an integrated process. These systems exemplify effective use of technology yielding widespread improvements in the process(es) and/or service(s) involved and/or cost savings to the organization.

The ESIG Award recipients will be officially recognized during the 2009 Awards Breakfast Ceremony taking place on October 1 at the 47th Annual URISA Conference in Anaheim, California.

URISA's recognition of RLID comes as RLID nears 10 years in service in Lane County and as the transition to a new and completely redeveloped version known as v2 nears completion. The award reflects well on a long-standing partnership in the region based on 40 years of inter-agency cooperation and sharing of geographic information.

achievements in the application of information technology that have improved the delivery and quality of government services. Virtual Charlotte (City of Charlotte, NC) was the 2009 ESIG winner in the Enterprise Systems category.

The Regional Land Information Database (RLID) was one of only two Enterprise Systems nationally to be deemed Distinguished Systems. Systems in the Enterprise category are outstanding and working examples of using informa-

tion systems technology in a multi-department environment as part of an integrated process. RLID owes its success to the unique and enduring "Common Mapping" consortium comprising Lane County, the cities of Eugene and Springfield, EWEB, LCOG and its member agencies.

Census Bureau Open House

At the invitation of local Census Bureau officials, LCOG staff participated in the Open House celebration held on August 20 at the local Census Bureau office on West Seventh Avenue in Eugene.

The event was designed to raise community awareness of the upcoming 2010 Census, and to focus community attention on the importance of participation. Census figures are used for

resource allocation through a large number of government programs, and an incomplete count will result in those resources being allocated elsewhere for the next ten years. Brief speeches were made by a number of local elected officials, including Springfield Mayor Sid Leiken, Lane County Commissioner Pete Sorenson, Oregon Secretary of State Kate Brown, and 4th

See **CENSUS** page 10



LCOG to Receive \$472,000 for Wetland and Riparian Project

Lane Council of Governments will receive nearly half a million dollars for a Southern Willamette Wetland and Riparian Area Inventory, Assessment, and Planning project. The Environmental Protection Agency (EPA) is awarding LCOG a \$472,000 cooperative agreement to assist at least nine cities in wetland and riparian inventories and assessments to help guide growth. The Southern Willamette River Valley is characterized by rich and diverse water resources and a swelling population. Nine rural cities (Creswell, Cottage Grove, Lowell, Harrisburg, Adair Village, Monroe, Scio, Mill City, and Brownsville) in Lane, Linn, and Benton counties will address the potential impacts of future development on natural resources by guiding growth. Working within the State's Land Use Goal framework,

this project inventories and prioritizes natural resources on detailed, local levels while working and communicating collaboratively. The local work will benefit individual cities, as well as the broader landscape of the watersheds, counties, and the region as a whole.

LCOG's expertise as a regional planning and coordination entity, combined with project partner proficiencies, will guide this project to effectively meeting targeted outcomes. Rather than ten cities working individually through essentially the same process, a team approach will be used to protect significant natural resources while promoting economic development. For more information, please contact Denise Kalakay at (541) 682-7415 or dkalakay@lcog.org.



surrounding natural areas, agricultural lands, and the Coburg Hills.

The path system will also accommodate a diversity of users including walkers, runners, bicyclists, tourists, school groups, kids, adults, and commuters and would be used to host events such as runs, night walks, and fitness events. Special attention was given to the path system alignment which was designed to connect key locations in and around Coburg including the Coburg Elementary School, local and regional park facilities, Downtown Coburg, employment areas, and residential neighborhoods in order to provide both a recreational amenity and a viable transportation option to residents and visitors.

The next steps for the Coburg Loop include pursuing funding to built portions of the path inside the urban growth boundary. For more information, please contact Petra Schuetz at (541) 682-3639 or pschuetz@lcog.org.





LANE COUNCIL OF GOVERNMENTS

859 WILLAMETTE STREET, SUITE 500
EUGENE, OREGON 97401-2910

The **REGIONAL FOCUS** is published by Lane Council of Governments on a quarterly basis. Back issues are also available in PDF format at www.lcog.org/rfnews.cfm

Editors: Colene Doll
Sarah Finney
Theron Roe

Design/Layout:
Sarah Finney

Contributing Authors:
Lynn Boone
Eric Brandt
Bill Clingman
Bob DenOuden
George Kloepfel
Robert Lewis
Patti Little
Arlene Lee
Jeff Krueger
Petra Schuetz
Bob Swank

Send comments, requests, or email address changes to: LCOG Regional Focus, 859 Willamette Street, Suite 500, Eugene, OR 97401-2910, or Sarah Finney at (541) 682-4072 or sfinney@lcog.org.



James Mitchem, Director of Census Bureau's Eugene office, addresses the Open House attendees.

as possible, as well as the many ways the resulting census data are used at LCOG. Other community groups represented at the Open House included Lane Sheltercare and Centro Latino Americano. The Eugene office is currently responsible for pre-census field operations throughout Oregon outside the Portland metropolitan area and the northern Willamette Valley, but with the planned opening of an office in the Bend-Redmond area later this year, the entire area east of the Cascade Range will be removed from the territory covered by the Eugene office.

From **CENSUS** page 8

District Representative Peter Defazio, as well as by local and regional Census Bureau officials. LCOG staff provided an informational display outlining the many programs through which LCOG partners with the Census Bureau to ensure that the data collected throughout Lane County are as complete and as accurate

View the LCOG meeting schedule online at www.lcog.org/calendar.cfm