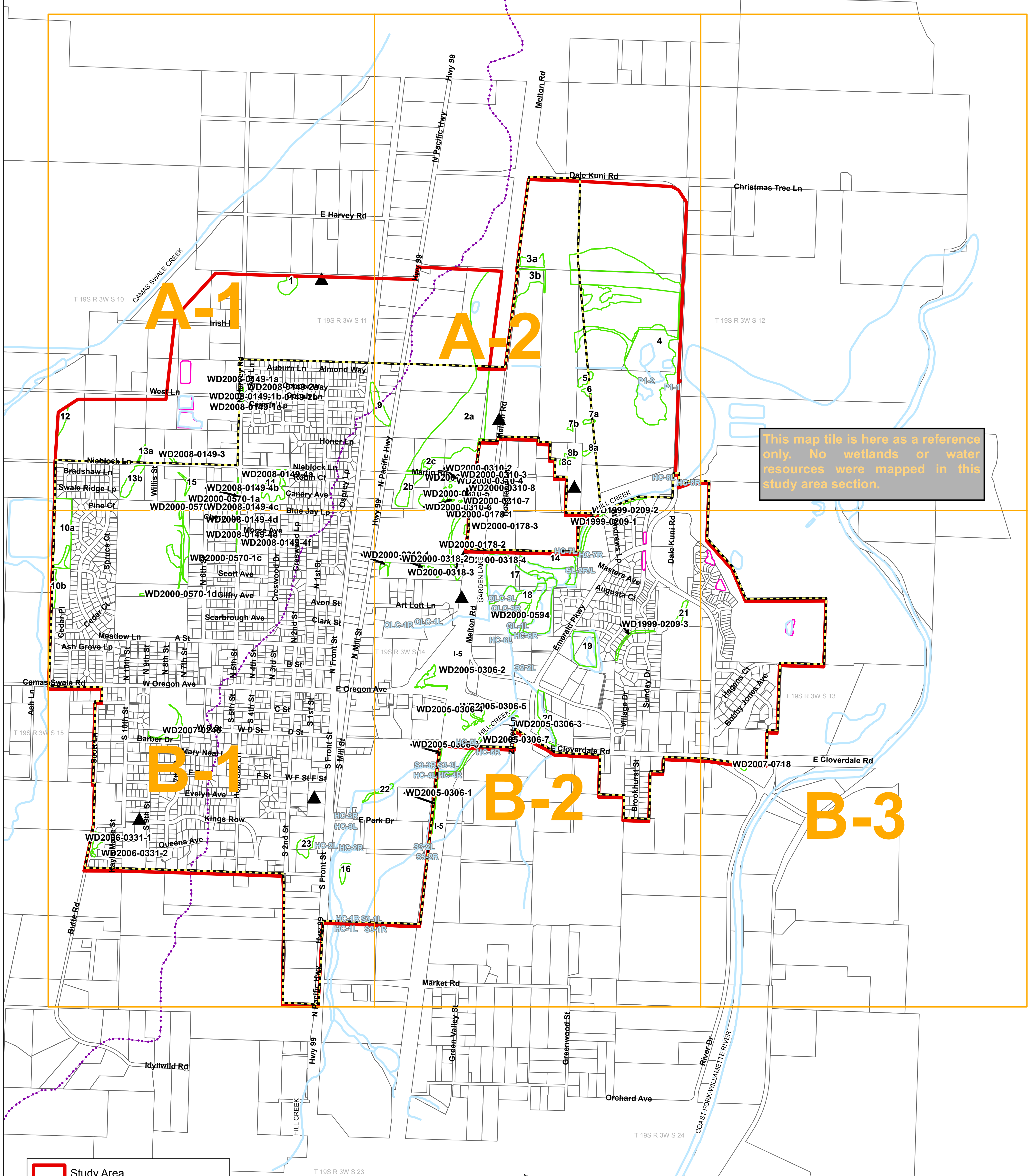


DRAFT

# Creswell Local Wetland Inventory Map Index

Camas Swale Watershed Lower Coast Fork Willamette Watershed



This map tile is here as a reference only. No wetlands or water resources were mapped in this study area section.

**Legend**

- Study Area
- Taxlots
- Urban Growth Boundary
- Public Land Survey System
- Probable Wetland (PW)\*
- Rivers, Streams & Ponds
- Watershed Boundary
- Artificial Wetland
- Riparian Reach Endpoint Label

**Locally Significant Wetlands**

- NO
- YES

Disclaimer: Information shown on this map is for planning purposes, represents the conditions that exist at the map date, and is subject to change. The location and extent of wetlands and other waters is approximate. There may be unmapped wetlands and other waters present that are subject to regulation. A current Oregon Department of State Lands-approved wetland delineation is required for state removal-fill permits. You are advised to contact the Department of State Lands and the U.S. Army Corps of Engineers with any regulatory questions.

\* A probable wetland appears to meet wetland criteria but is less than or equal to 0.10 acres or is small and of an undetermined size.

Completed 02/24/2010

Creswell Locally Significant Wetlands					
Wetland Code	Acres	Wetland Code	Acres	Wetland Code	Acres
1	1.19	21	0.59	WD2000-0318-4	0.33
2a-c	26.51	22	0.44	WD2000-0570-1a-d	2.2
3a-b	3.43	23	1.05	WD2000-0594*	0.04
4	33.46	WD1999-0209-1	0.3	WD2005-0306-1	0.28
5	0.49	WD1999-0209-2	1.14	WD2005-0306-2	0.76
6	0.23	WD1999-0209-3	0.47	WD2005-0306-3	0.01
7a-b	0.33	WD2000-0178-1	0.52	WD2005-0306-4	0.03
8a-c	0.54	WD2000-0178-2	0.31	WD2005-0306-5	1.58
9	1.65	WD2000-0178-3	0.12	WD2005-0306-6	0.18
10a-b	5.79	WD2000-0310-1	0.04	WD2005-0306-7	1.23
11	2.09	WD2000-0310-2	0.01	WD2006-0331-1	0.47
12	0.75	WD2000-0310-3	0.004	WD2006-0331-2	0.07
13a-b	1.34	WD2000-0310-4	0.04	WD2007-0246	0.98
14	3.42	WD2000-0310-5*	1.77	WD2007-0718	0.17
15	0.29	WD2000-0310-6	0.03	WD2008-0149-1a-c	0.14
16	0.56	WD2000-0310-7	0.03	WD2008-0149-2a-b	0.04
17	11.51	WD2000-0310-8	0.04	WD2008-0149-3*	0.19
18	1.65	WD2000-0318-1	0.2	WD2008-0149-4a-f	0.07
19	3.38	WD2000-0318-2	0.04		
20	2.33	WD2000-0318-3	0.15		

