

Study Area

Railroad

Taxlots

City Limits

Urban Growth Boundary

Public Land Survey System

Waterways

Other Waters

Wetland Area

Probable Wetland

**Wetland Cowardin Class**

PEMC - Emergent, Seasonally Flooded

PFOA - Forested, Temporarily Flooded

PFOC - Forested, Seasonally Flooded

PUBF - Freshwater Pond, Semi-permanently Flooded

\*\*Entire study area is within the Lower Thomas Creek Subbasin (HUC 6th field)

**NOTE: All Wetlands identified on this map were determined to be "Locally Significant Wetlands"**

0 500 1,000 2,000 Feet

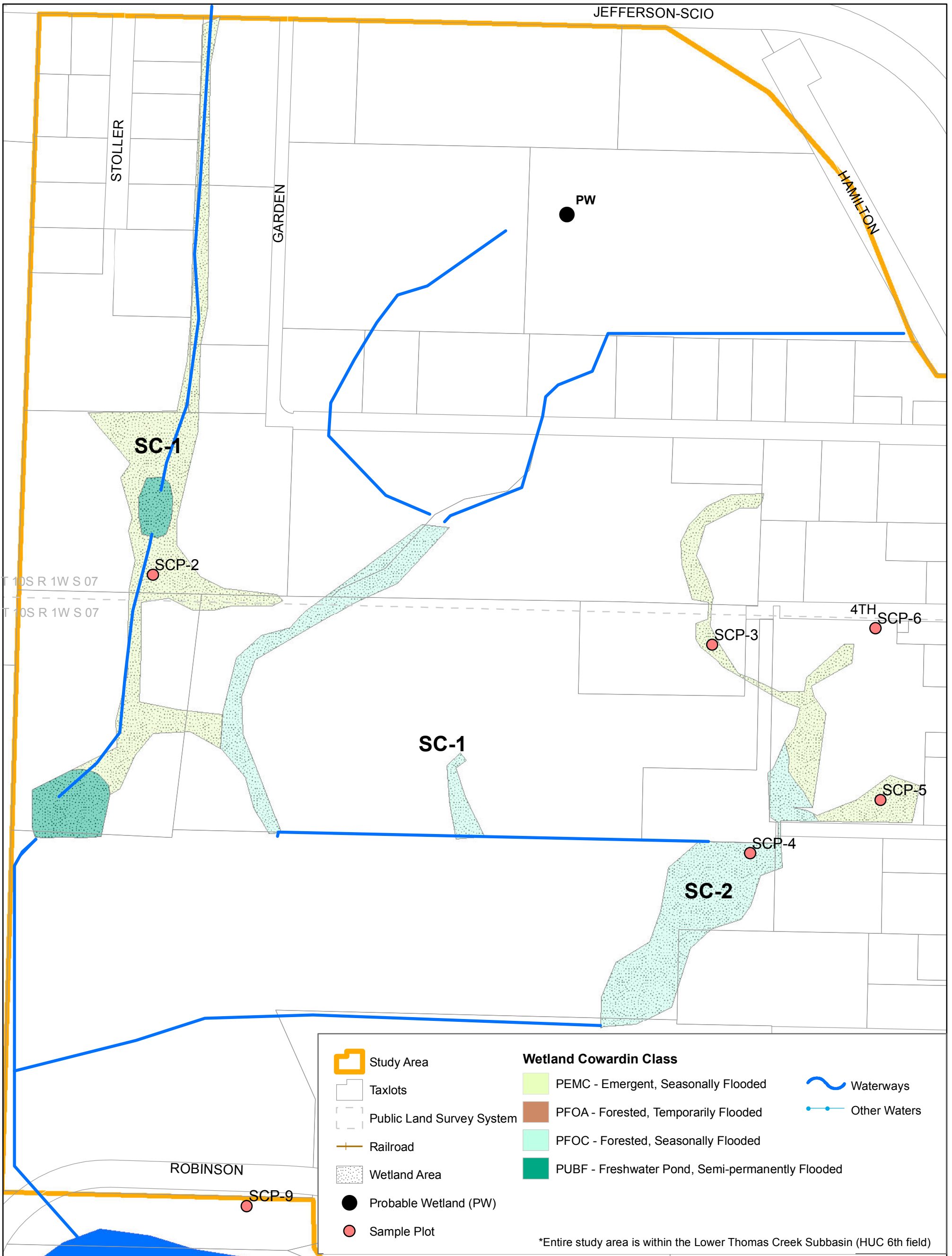
## Sheet 1 -- City of Scio Local Wetlands Inventory - Index Map

Information shown on this map is for planning purposes, represents the conditions that exist at the map date, and is subject to change. The location and extent of wetlands and other waters is approximate. There may be unmapped wetlands and other waters present that are subject to regulation. A current Oregon Department of State Lands-approved wetland delineation is required for state removal-fill permits. You are advised to contact the Department of State Lands and the U.S. Army Corps of Engineers with any regulatory questions.

MAP PRODUCED BY: **LANE COUNCIL OF GOVERNMENTS** WETLAND DATA PROVIDED BY: **SWCA ENVIRONMENTAL CONSULTANTS**  
Sound Science. Creative Solutions.

Date of map preparation: 12/6/2011



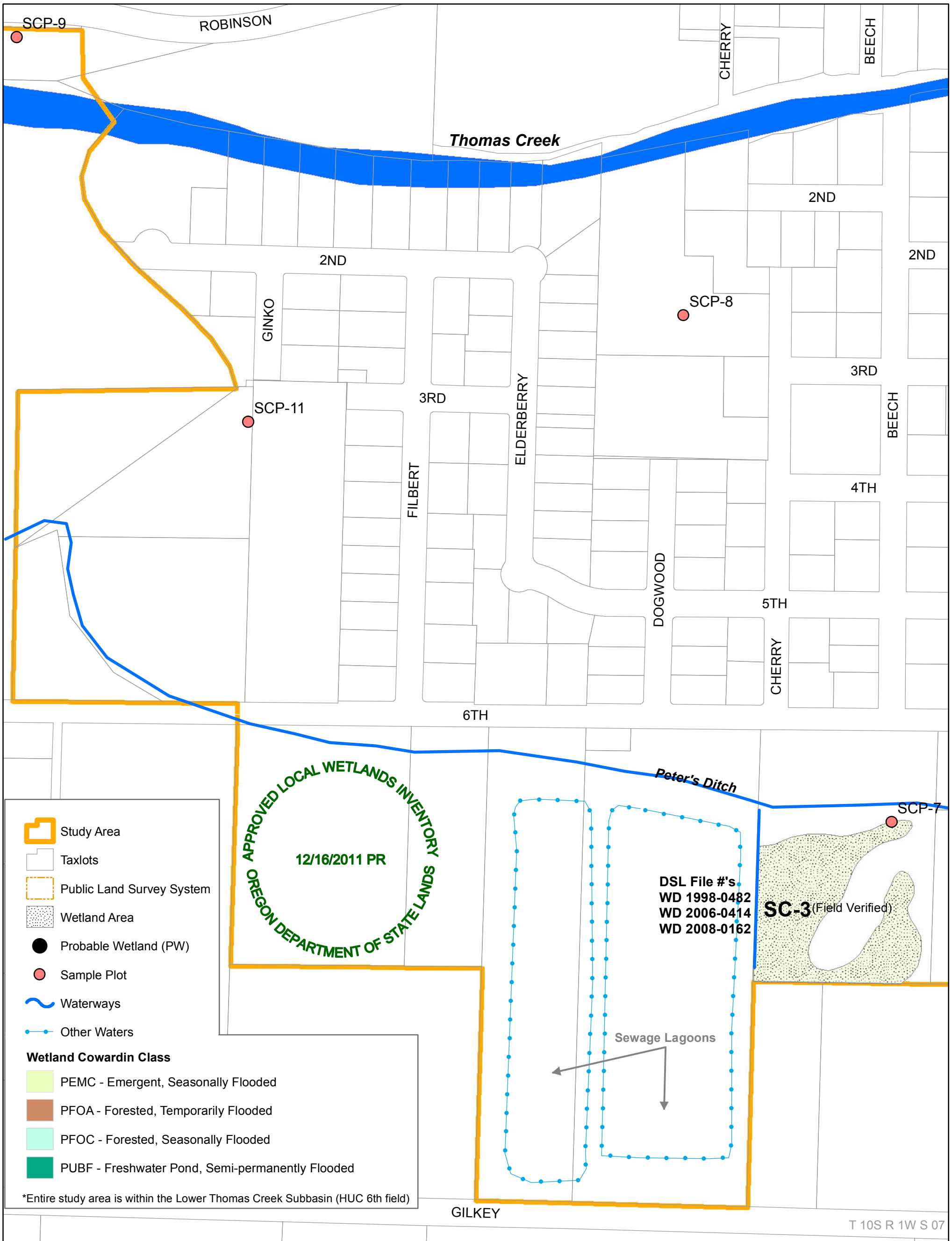


## Sheet 2 -- City of Scio Local Wetlands Inventory -- A-1

Information shown on this map is for planning purposes, represents the conditions that exist at the map date, and is subject to change. The location and extent of wetlands and other waters is approximate. There may be unmapped wetlands and other waters present that are subject to regulation. A current Oregon Department of State Lands-approved wetland delineation is required for state removal-fill permits. You are advised to contact the Department of State Lands and the U.S. Army Corps of Engineers with any regulatory questions.

MAP PRODUCED BY: **LCOG** LANE COUNCIL OF GOVERNMENTS  
 WETLAND DATA PROVIDED BY: **SWCA** ENVIRONMENTAL CONSULTANTS  
*Sound Science. Creative Solutions.*

Date of map preparation: 12/6/2011



## Sheet 3 -- City of Scio Local Wetlands Inventory -- A-2

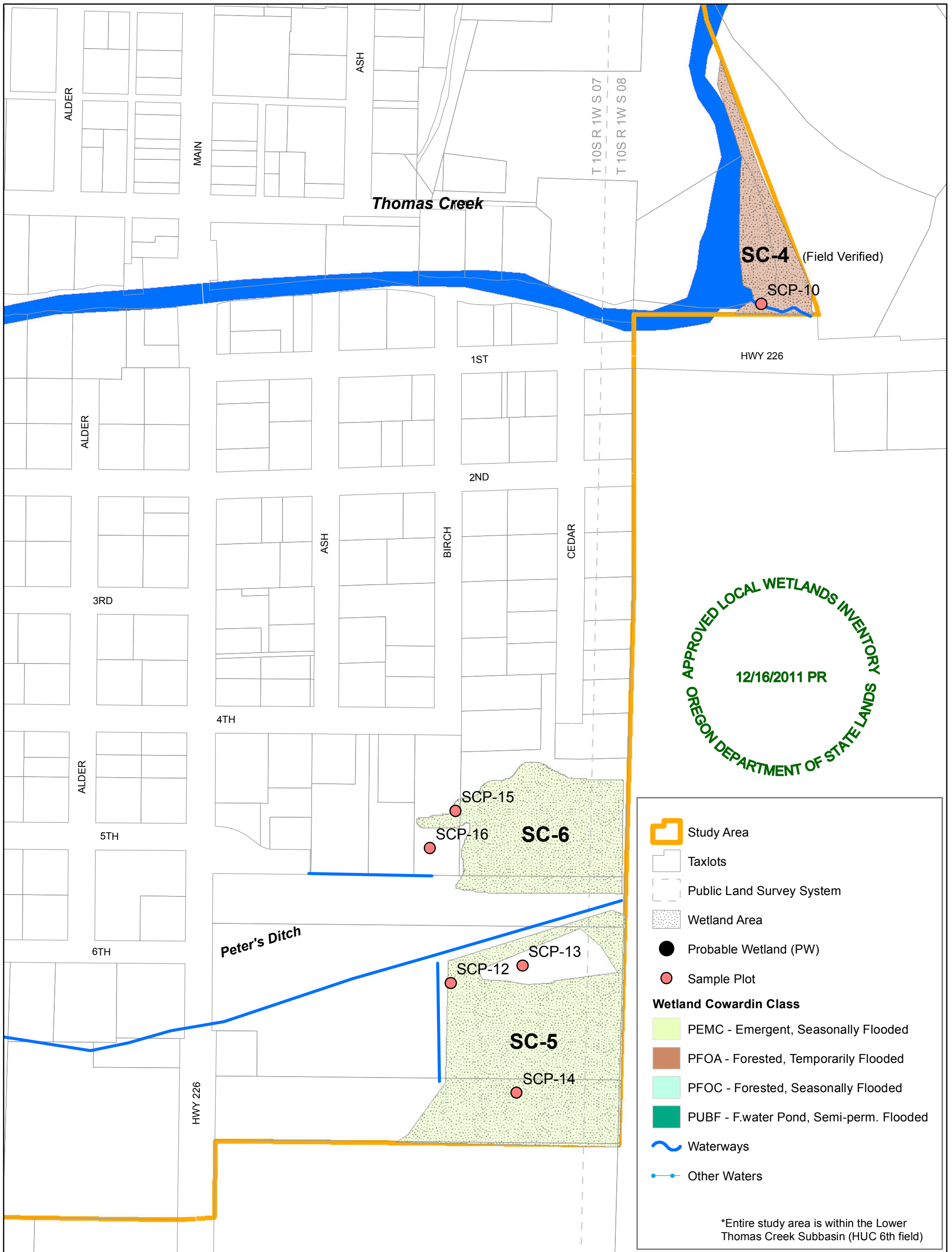
Information shown on this map is for planning purposes, represents the conditions that exist at the map date, and is subject to change. The location and extent of wetlands and other waters is approximate. There may be unmapped wetlands and other waters present that are subject to regulation. A current Oregon Department of State Lands-approved wetland delineation is required for state removal-fill permits. You are advised to contact the Department of State Lands and the U.S. Army Corps of Engineers with any regulatory questions.

MAP PRODUCED BY:  
**LCOG**  
LANE COUNCIL OF GOVERNMENTS

WETLAND DATA PROVIDED BY:  
**SWCA**  
ENVIRONMENTAL CONSULTANTS  
Sound Science. Creative Solutions.

Date of map preparation: 12/6/2011





## Sheet 4 -- City of Scio Local Wetlands Inventory -- A-3

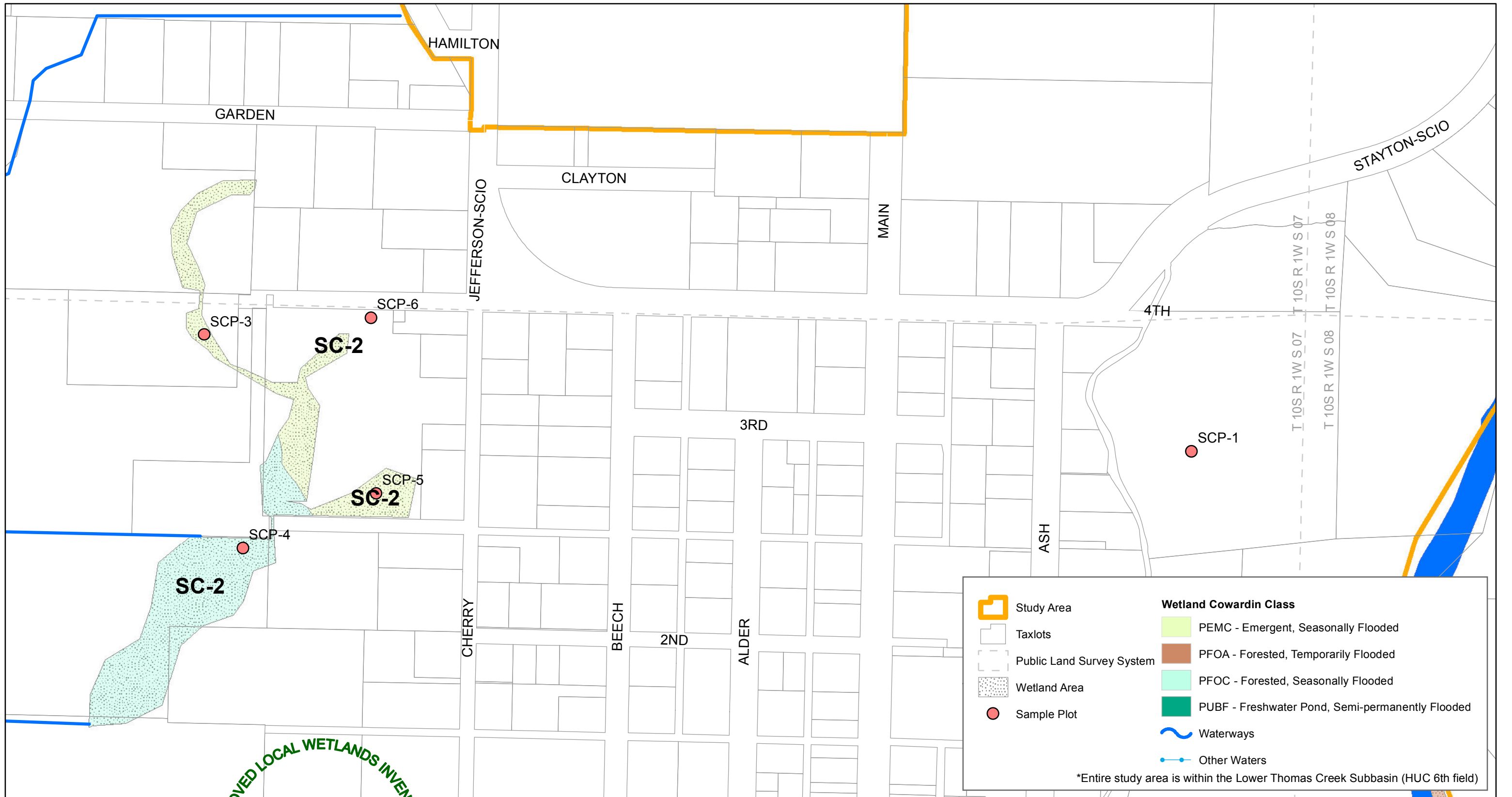
Information shown on this map is for planning purposes, represents the conditions that exist at the map date, and is subject to change. The location and extent of wetlands and other waters is approximate. There may be unmapped wetlands and other waters present that are subject to regulation. A current Oregon Department of State Lands-approved wetland delineation is required for state removal-fill permits. You are advised to contact the Department of State Lands and the U.S. Army Corps of Engineers with any regulatory questions.

MAP PRODUCED BY:  
**LCOG**  
LANE COUNCIL OF GOVERNMENTS

WETLAND DATA PROVIDED BY:  
**SWCA**  
ENVIRONMENTAL CONSULTANTS  
Sound Science. Creative Solutions.

Date of map preparation: 12/6/2011





APPROVED LOCAL WETLANDS INVENTORY  
12/16/2011 PR  
OREGON DEPARTMENT OF STATE LANDS

### Sheet 5 -- City of Scio Local Wetlands Inventory -- A-4

Information shown on this map is for planning purposes, represents the conditions that exist at the map date, and is subject to change. The location and extent of wetlands and other waters is approximate. There may be unmapped wetlands and other waters present that are subject to regulation. A current Oregon Department of State Lands-approved wetland delineation is required for state removal-fill permits. You are advised to contact the Department of State Lands and the U.S. Army Corps of Engineers with any regulatory questions.

MAP PRODUCED BY:  
**LCOG**  
LANE COUNCIL OF GOVERNMENTS

WETLAND DATA PROVIDED BY:  
**SWCA**  
ENVIRONMENTAL CONSULTANTS  
Sound Science. Creative Solutions.

Date of map preparation: 12/6/2011





APPROVED LOCAL WETLANDS INVENTORY  
 12/16/2011 PR  
 OREGON DEPARTMENT OF STATE LANDS

## Sheet 6 -- City of Scio Local Wetlands Inventory -- A-5

Information shown on this map is for planning purposes, represents the conditions that exist at the map date, and is subject to change. The location and extent of wetlands and other waters is approximate. There may be unmapped wetlands and other waters present that are subject to regulation. A current Oregon Department of State Lands-approved wetland delineation is required for state removal-fill permits. You are advised to contact the Department of State Lands and the U.S. Army Corps of Engineers with any regulatory questions.

MAP PRODUCED BY: **LCOG** LANE COUNCIL OF GOVERNMENTS  
 WETLAND DATA PROVIDED BY: **SWCA** ENVIRONMENTAL CONSULTANTS  
 Sound Science. Creative Solutions.

Date of map preparation: 12/6/2011