

## Estimated Vehicle Miles Traveled on State-owned highways in Lane County and Lane County Population, from 1991 through 2009

Sources:

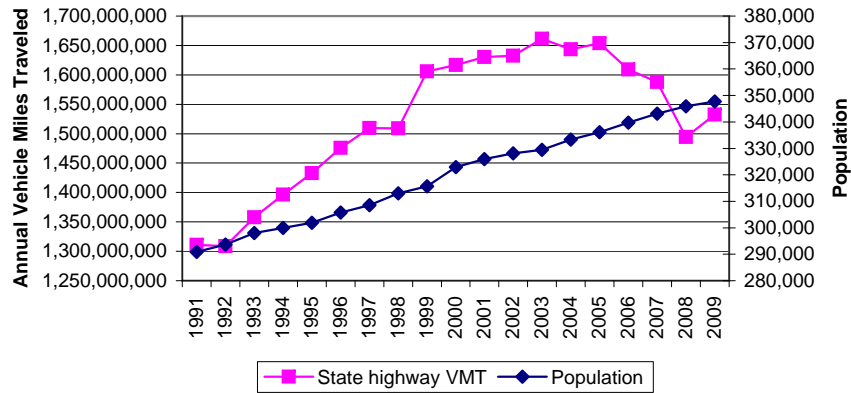
VMT: ODOT (March 2011) <http://www.oregon.gov/ODOT/TD/TDATA/tsm/vmtpage.shtml>

Population: US Census Bureau, Portland State University - compiled by LCOG, <http://www.lcog.org/lgs/ira.html>

Gasoline Prices (excl. local taxes): US Energy Information Administration, [http://tonto.eia.doe.gov/dnav/pet/pet\\_pri\\_allmg\\_d\\_SOR\\_PTC\\_cpgal\\_a.htm](http://tonto.eia.doe.gov/dnav/pet/pet_pri_allmg_d_SOR_PTC_cpgal_a.htm)

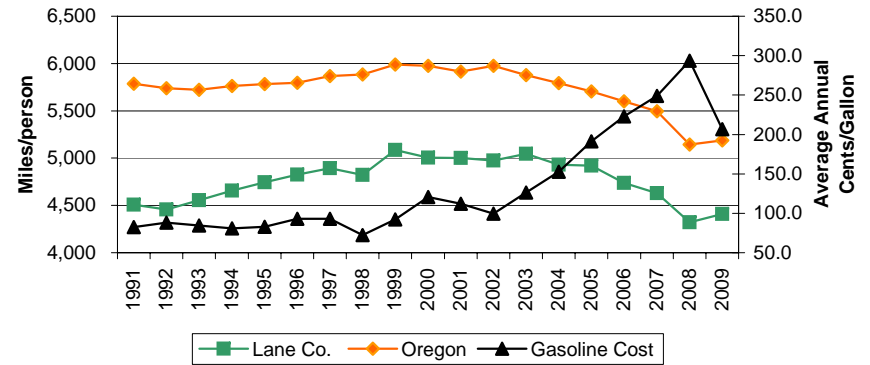
### Lane County Population and Travel Mileage on State Highways within Lane County.

Source: ODOT; PSU; US Census



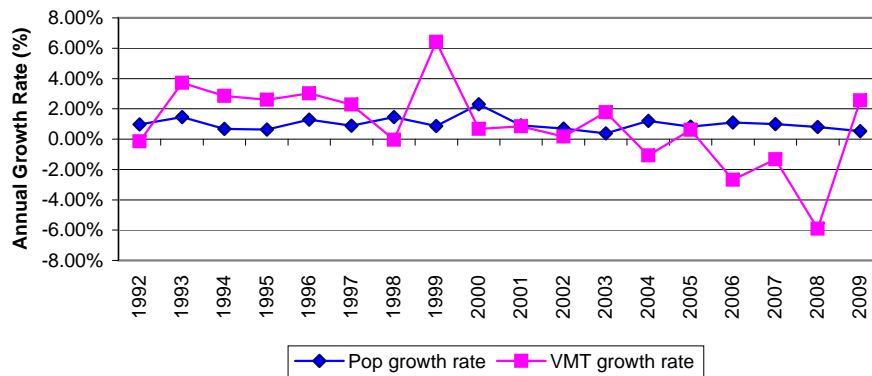
### VMT per Capita on State-Owned Highways within Oregon and within Lane Co., including Average Annual Cost of Gasoline at Oregon Retail Outlets

Source: ODOT; PSU; US Census; US EIA



### Growth Rates of Lane County Population and Travel Mileage on State Highways in Lane Co.

Source: Derived from ODOT; PSU; US Census



### Growth Rates of State Population and Travel Mileage on all State Highways

Source: Derived from ODOT; PSU; US Census

