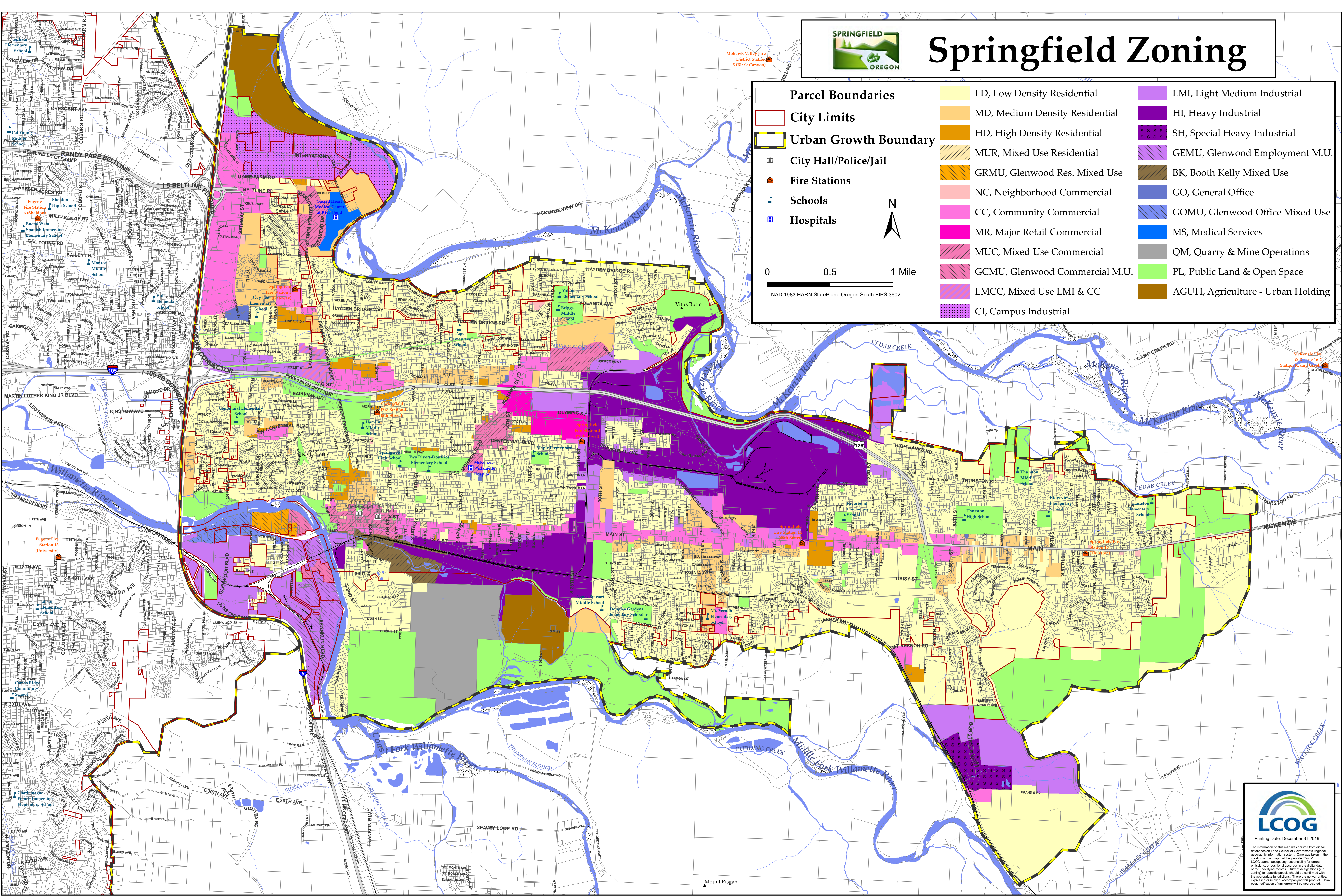
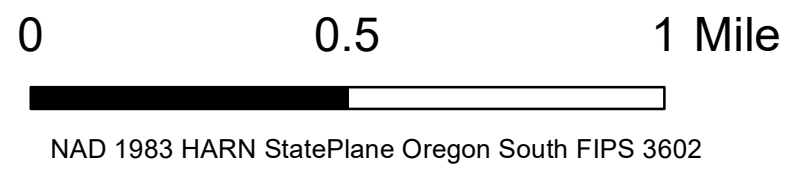




Springfield Zoning

	Parcel Boundaries		LD, Low Density Residential		LMI, Light Medium Industrial
	City Limits		MD, Medium Density Residential		HI, Heavy Industrial
	Urban Growth Boundary		HD, High Density Residential		SH, Special Heavy Industrial
	City Hall/Police/Jail		MUR, Mixed Use Residential		GEMU, Glenwood Employment M.U.
	Fire Stations		GRMU, Glenwood Res. Mixed Use		BK, Booth Kelly Mixed Use
	Schools		NC, Neighborhood Commercial		GO, General Office
	Hospitals		CC, Community Commercial		GOMU, Glenwood Office Mixed-Use
			MR, Major Retail Commercial		MS, Medical Services
			MUC, Mixed Use Commercial		QM, Quarry & Mine Operations
			GCMU, Glenwood Commercial M.U.		PL, Public Land & Open Space
			LMCC, Mixed Use LMI & CC		AGUH, Agriculture - Urban Holding
			CI, Campus Industrial		



Printing Date: December 31 2019

The information on this map was derived from digital databases on Lane Council of Governments' regional geographic information system. Care was taken in the creation of this map, but it is provided "as is". LCOG cannot accept any responsibility for errors, omissions, or positional accuracy in the digital data or the underlying records. Current designations (e.g. zoning) for specific parcels should be confirmed with the appropriate jurisdiction. There are no warranties, expressed or implied, accompanying this product. However, notification of any errors will be appreciated.