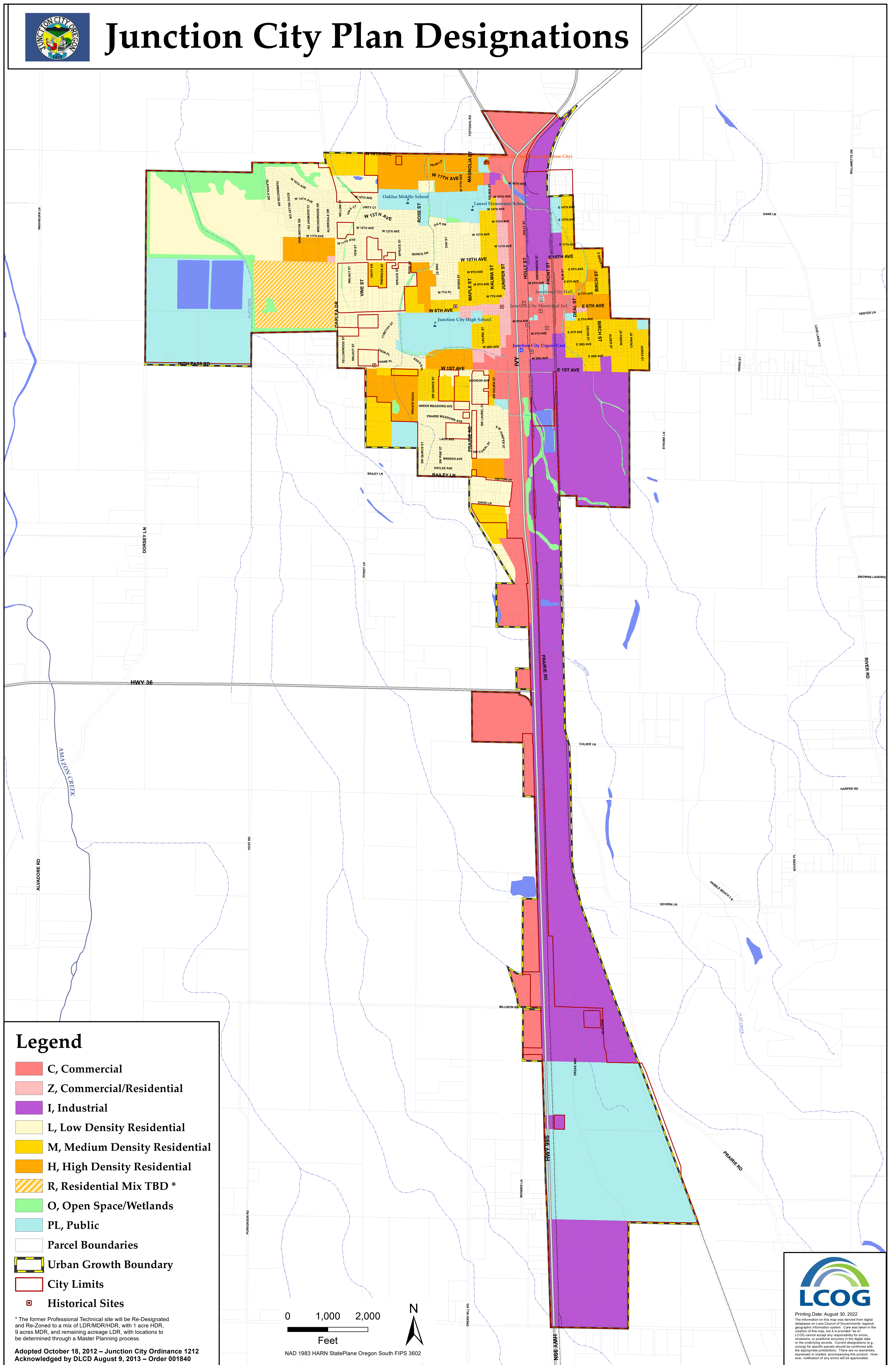




Junction City Plan Designations

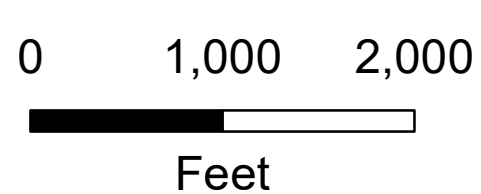


Legend

- C, Commercial
- Z, Commercial/Residential
- I, Industrial
- L, Low Density Residential
- M, Medium Density Residential
- H, High Density Residential
- R, Residential Mix TBD *
- O, Open Space/Wetlands
- PL, Public
- Parcel Boundaries
- Urban Growth Boundary
- City Limits
- Historical Sites

* The former Professional Technical site will be Re-Designated and Re-Zoned to a mix of LDR/MDR/HDR, with 1 acre HDR, 9 acres MDR, and remaining acreage LDR, with locations to be determined through a Master Planning process.

Adopted October 18, 2012 – Junction City Ordinance 1212
 Acknowledged by DLCD August 9, 2013 – Order 001840



NAD 1983 HARN StatePlane Oregon South FIPS 3602



Printing Date: August 30, 2022
 The information on this map was derived from digital databases on Lane County of Government's regional geographic information system. Care was taken in the creation of this map, but it is provided "as is". LCOG cannot accept any responsibility for errors, omissions, or positional accuracy in the digital data or the underlying records. Current designations (e.g. zoning) for specific parcels should be confirmed with the appropriate jurisdictions. There are no warranties, expressed or implied, accompanying this product. However, notification of any errors will be appreciated.