



COUNCIL ORDINANCE NO. 20584

COUNCIL BILL 5177

AN ORDINANCE ESTABLISHING THE EUGENE URBAN GROWTH BOUNDARY, INCLUDING AN EXPANSION FOR EMPLOYMENT, PARKS AND SCHOOLS BY: AMENDING TEXT AND MAPS IN THE EUGENE-SPRINGFIELD METROPOLITAN AREA GENERAL PLAN; ADOPTING THE ENVISION EUGENE COMPREHENSIVE PLAN, INCLUDING POLICIES FOR GROWTH MANAGEMENT MONITORING; REPEALING THE EUGENE COMMERCIAL LANDS STUDY; AMENDING THE PUBLIC FACILITIES AND SERVICES PLAN; AMENDING THE EUGENE 2035 TRANSPORTATION SYSTEM PLAN; ADDING SECTIONS 9.4150 THROUGH 9.4170 AND SECTIONS 9.8070 THROUGH 9.8074 TO THE EUGENE CODE, 1971; AMENDING SECTIONS 2.350, 2.1086, 6.250, 6.320, 7.715, 9.0020, 9.0500, 9.1010, 9.1040, 9.1060, 9.2100, 9.2110, 9.2120, 9.2140, 9.2400, 9.2405, 9.2410, 9.2420, 9.2430, 9.2450, 9.2500, 9.2600, 9.2620, 9.2680, 9.2700, 9.2705, 9.2710, 9.2720, 9.2730, 9.2790, 9.3020, 9.3100, 9.3130, 9.4070, 9.4260, 9.4610, 9.4640, 9.4700, 9.4778, 9.4800, 9.6600, 9.6791, 9.6860, 9.6880, 9.7000, 9.7007, 9.7055, 9.7305, 9.7400, 9.7405, 9.7500, 9.7505, 9.7510, 9.7800, 9.7820, 9.8010, 9.8030, 9.8065, 9.8085, 9.8090, 9.8100, 9.8115, 9.8200, 9.8220, 9.8320, 9.8325, 9.8421, 9.8424, 9.8440, 9.8445, 9.8500, 9.8515, 9.8520, 9.8550, 9.8850, 9.8855, 9.8865 AND 9.9560 OF THE EUGENE CODE, 1971; REPEALING SECTION 9.9530 OF THE EUGENE CODE, 1971; AMENDING THE EUGENE ZONING MAP; AMENDING THE EUGENE OVERLAY ZONE MAP; AMENDING THE GOAL 5 WATER RESOURCES AND CONSERVATION PLAN; AND AMENDING THE WATER QUALITY WATERWAYS MAP AND THE LIST OF TAX LOTS TO WHICH THE WATER QUALITY WATERWAYS OVERLAY ZONE WILL BE APPLIED UPON ANNEXATION.

ADOPTED: July 17, 2017

SIGNED: July 24, 2017

PASSED: 6:2

REJECTED:

OPPOSED: Clark, Taylor

EFFECTIVE: Notwithstanding the effective date of ordinances as provided in the Eugene Charter of 2002, this Ordinance shall become effective 30 days from the date of its passage by the City Council and approval by the Mayor, or upon the date the Lane County Board of Commissioners has adopted an ordinance containing substantially identical provisions to those described in Sections 1-5 and 9 of this Ordinance, whichever is later.



ORDINANCE NO. 20584

AN ORDINANCE ESTABLISHING THE EUGENE URBAN GROWTH BOUNDARY, INCLUDING AN EXPANSION FOR EMPLOYMENT, PARKS AND SCHOOLS BY: AMENDING TEXT AND MAPS IN THE EUGENE-SPRINGFIELD METROPOLITAN AREA GENERAL PLAN; ADOPTING THE ENVISION EUGENE COMPREHENSIVE PLAN, INCLUDING POLICIES FOR GROWTH MANAGEMENT MONITORING; REPEALING THE EUGENE COMMERCIAL LANDS STUDY; AMENDING THE PUBLIC FACILITIES AND SERVICES PLAN; AMENDING THE EUGENE 2035 TRANSPORTATION SYSTEM PLAN; ADDING SECTIONS 9.4150 THROUGH 9.4170 AND SECTIONS 9.8070 THROUGH 9.8074 TO THE EUGENE CODE, 1971; AMENDING SECTIONS 2.350, 2.1086, 6.250, 6.320, 7.715, 9.0020, 9.0500, 9.1010, 9.1040, 9.1060, 9.2100, 9.2110, 9.2120, 9.2140, 9.2400, 9.2405, 9.2410, 9.2420, 9.2430, 9.2450, 9.2500, 9.2600, 9.2620, 9.2680, 9.2700, 9.2705, 9.2710, 9.2720, 9.2730, 9.2790, 9.3020, 9.3100, 9.3130, 9.4070, 9.4260, 9.4610, 9.4640, 9.4700, 9.4778, 9.4800, 9.6600, 9.6791, 9.6860, 9.6880, 9.7000, 9.7007, 9.7055, 9.7305, 9.7400, 9.7405, 9.7500, 9.7505, 9.7510, 9.7800, 9.7820, 9.8010, 9.8030, 9.8065, 9.8085, 9.8090, 9.8100, 9.8115, 9.8200, 9.8220, 9.8320, 9.8325, 9.8421, 9.8424, 9.8440, 9.8445, 9.8500, 9.8515, 9.8520, 9.8550, 9.8850, 9.8855, 9.8865 AND 9.9560 OF THE EUGENE CODE, 1971; REPEALING SECTION 9.9530 OF THE EUGENE CODE, 1971; AMENDING THE EUGENE ZONING MAP; AMENDING THE EUGENE OVERLAY ZONE MAP; AMENDING THE GOAL 5 WATER RESOURCES AND CONSERVATION PLAN; AND AMENDING THE WATER QUALITY WATERWAYS MAP AND THE LIST OF TAX LOTS TO WHICH THE WATER QUALITY WATERWAYS OVERLAY ZONE WILL BE APPLIED UPON ANNEXATION.

The City Council of the City of Eugene finds as follows:

A. Historically, the urban growth boundary (“UGB”) for the City of Eugene and the City of Springfield was a shared UGB, referred to as the “Metropolitan UGB,” within which Eugene’s jurisdictional area of responsibility was the land on the west side of Interstate 5 and Springfield’s jurisdictional area of responsibility was the land on the east side of Interstate 5.

B. House Bill 3337, passed by the Oregon State Legislature in 2007 and codified at ORS 197.304, provides: “Notwithstanding an intergovernmental agreement... or acknowledged comprehensive plan provisions to the contrary, a city within Lane County that has a population of 50,000 or more within its boundaries shall, separately from any other city: (a) Establish an urban growth boundary, consistent with the jurisdictional area of responsibility specified in the acknowledged comprehensive plan.”

C. In 2011, the City of Springfield and Lane County took actions that established the Springfield UGB by adopting a division of the Metropolitan UGB along Interstate 5, with the land east of Interstate 5 thereafter included in the Springfield UGB and the remainder land on the west of Interstate 5 to be included in a UGB for Eugene.

D. With this Ordinance, the City of Eugene approves the establishment and expansion of the Eugene UGB to accommodate the City’s 20-year (2012-2032) need for additional employment, park and school land.

E. In 1992, by Ordinances Nos. 19852 and 19879, the Eugene City Council adopted the Eugene Commercial Lands Study as a refinement of the Eugene-Springfield Metropolitan Area General Plan to pertain to the Eugene portion of the Metropolitan UGB. The Lane County Board of Commissioners also adopted the Eugene Commercial Lands Study by PA 1018 in 1992. The Eugene Commercial Lands Study concluded that the Eugene side of the Metropolitan UGB had a surplus of commercial land to meet Eugene's needs for commercial land through, at least, 2010.

F. In 1992, by Ordinance No. 19866, the Eugene City Council approved the Metropolitan Industrial Lands Special Study Inventory Report and Metropolitan Industrial Lands Special Study Policy Recommendations Draft Report, pertaining to the entire Metropolitan UGB. The City of Springfield and Lane County Board of Commissioners also approved both reports (Lane County did so by PA 1022 in 1992). The Report and Study concluded the Metropolitan UGB had a surplus of industrial land to meet both Cities' needs through, at least, 2010. The Report and Study are no longer valid for Eugene.

G. The City of Eugene has taken numerous "efficiency measures" to increase the likelihood of new employment opportunities inside the Eugene UGB.

H. As explained in detail by the findings attached as an exhibit to this Ordinance, the City and County have determined that the City's entire need for employment land cannot be satisfied through "efficiency measures" and the Eugene UGB must be expanded to include additional land to meet the employment needs of Eugene's population through 2032.

I. As explained in detail by the findings attached as an exhibit to this Ordinance, the City and County have determined that the Eugene UGB must be expanded to include additional land for two community parks and a school to meet the park and school needs of Eugene's population through 2032.

NOW THEREFORE,

THE CITY OF EUGENE DOES ORDAIN AS FOLLOWS:

Section 1. The Eugene-Springfield Metropolitan Area General Plan is amended as follows:

(a) The text of the Eugene-Springfield Metropolitan Area General Plan is amended as shown on Exhibit A-1 to this Ordinance.

(b) The Eugene-Springfield Metropolitan Area General Plan "Plan Boundaries" map is amended to add "Eugene Urban Growth Boundary" to the legend and to provide an illustrative depiction of the Eugene UGB as shown on Exhibit A-2 to this Ordinance. All other features of that map remain unchanged by this Ordinance.

(c) The Eugene-Springfield Metropolitan Area General Plan "Plan Diagram" map is amended to:

(1) Add “Eugene Urban Growth Boundary” to the legend and to provide an illustrative depiction of the Eugene UGB as shown on Exhibit A-2 to this Ordinance; and

(2) Apply Metro Plan land use designations to the land added to the Eugene UGB as described on the table at Exhibit A-3 and as shown on the maps at Exhibit A-4 to this Ordinance.

All other features of that diagram remain unchanged by this Ordinance.

Section 2. The Envision Eugene Comprehensive Plan at Exhibit B-1 to this Ordinance is hereby adopted.

(a) The Eugene Urban Growth Boundary Location Map on the compact disc at Exhibit B-2 to this Ordinance is adopted as Appendix A to the Envision Eugene Comprehensive Plan and is the official Eugene Urban Growth Boundary Location Map. The depiction of the Eugene UGB included on the Eugene Urban Growth Boundary map in the body of the Envision Eugene Comprehensive Plan is a representative depiction of the UGB location shown on Exhibit B-2 (Appendix A to the Envision Eugene Comprehensive Plan), and is provided only for illustrative purposes.

(b) The Envision Eugene Employment Land Supply Study at Exhibit B-3 to this Ordinance, including the City’s Economic Opportunities Analysis and Employment Land Buildable Lands Inventory at Parts II and VI of the Study, is adopted as Appendix B to the Envision Eugene Comprehensive Plan.

Section 3. The Eugene Commercial Lands Study adopted by Eugene Ordinance No. 19852 and amended by Ordinance No. 19879 is repealed.

Section 4. The Eugene-Springfield Metropolitan Area Public Facilities and Services Plan text is amended as shown in Exhibit C-1 to this Ordinance and Maps 1, 2, 3 and 8 are amended as shown on the maps at Exhibit C-2 to this Ordinance.

Section 5. The Eugene 2035 Transportation System Plan is amended as shown in Exhibit D to this Ordinance.

Section 6. The text, maps and figures of the Eugene Code, 1971, are amended, added and repealed, as shown in Exhibit E to this Ordinance.

Section 7. The Eugene Zoning Map is amended to:

(a) Replace the urban growth boundary shown on that map with an illustrative depiction of the Eugene UGB as shown on Exhibit A-2 to this Ordinance;

(b) Apply zones to the land added to the Eugene UGB as described on the table at Exhibit A-3 and as shown on the maps at Exhibit F to this Ordinance.

Section 8. The Eugene Overlay Zone Map is amended to:

- (a) Replace the UGB shown on that map with an illustrative depiction of the Eugene UGB as shown on Exhibit A-2 to this Ordinance;
- (b) Add “/CL Clear Lake Overlay Zone” to the legend; and
- (c) Apply overlay zones to the land added to the Eugene UGB as described on the table at Exhibit A-3 and as shown on the maps at Exhibit G to this Ordinance.

Section 9. The Goal 5 Water Resources Conservation Plan is amended as shown in Exhibit H attached to this Ordinance.

Section 10. The City’s Water Quality Waterways Map is hereby amended to:

- (a) Delete the reference to “(2/20/09)” that follows the Tax Lot entry on the Map legend; and
- (b) Add the information shown on the maps on the compact disc at Exhibit I to this Ordinance. Printed copies of the Exhibit I maps are attached to this Ordinance for illustrative purposes only.

Section 11. The following heading and table are added to the end of Exhibit C to Ordinance No. 20430 (the list of properties to which the /WQ Overlay Zone should be applied upon annexation):

**List of Affected Tax Lots Outside City Limits and Within UGB
City of Eugene Water Quality Protected Waterways (2012)**

| Number | Tax Lot Number |
|---------------|-----------------------|
| 182 | 1704080002300 |
| 183 | 1704080003000 |
| 184 | 1704092000800 |
| 185 | 1704092001300 |
| 186 | 1704092001400 |
| 187 | 1704080002400 |
| 188 | 1704090001100 |
| 189 | 1704160000300 |
| 190 | 1704160000400 |
| 191 | 1704160000500 |
| 192 | 1704160000100 |
| 193 | 1704160000200 |
| 194 | 1704160000700 |
| 195 | 1704010002900 |

Section 12. The findings set forth in Exhibit J to this Ordinance are provided in support of this Ordinance.

Section 13. Notwithstanding the effective date of ordinances as provided in the Eugene Charter of 2002, this Ordinance shall become effective 30 days from the date of its passage by the City Council and approval by the Mayor, or upon the date the Lane County Board of Commissioners has adopted an ordinance containing substantially identical provisions to those described in Sections 1-5 and 9 of this Ordinance, whichever is later.

Section 14. The City Recorder, at the request of, or with the concurrence of the City Attorney, is authorized to administratively correct any reference errors contained herein, including replacing the "draft" labels with "final" labels and completing any incomplete references to this Ordinance on all Exhibits.

Passed by the City Council this

17th day of July, 2017

Beth Forrest
City Recorder

Approved by the Mayor this

24 day of July, 2017

Lucy Vinis
Mayor

Eugene Metropolitan Area Public Facilities and Services Plan Amendments

- Table 1 of the Eugene Metropolitan Area Public Facilities and Services Plan is amended as follows:

**Table 1
Eugene Water & Electric Board (EWEB) Water System Improvement Projects**

| Project Number | Project Name/Description |
|-----------------------|--|
| Short-Term | |
| [107 | Green Hill/Airport mainline] |
| [108 | EWEB/Seneca 42-inch transmission line] |
| [109 | City View reservoir (800)] |
| [110 | Hayden Bridge Expansion and 10mg Reservoir and pump gallery] |
| 111 | <i>Hawkins Hill reservoir seismic upgrades</i> |
| 112 | <i>Willamette reservoir (800) replacement</i> |
| 113 | <i>Shasta constant run pump station (1150)</i> |
| 114 | <i>Willamette pump station (975)</i> |
| 115 | <i>Crenshaw pump station (800)</i> |
| 116 | <i>Hawkins View pump station (1150)</i> |
| 117 | <i>Crest pump station (1150) replacement</i> |
| Long-Term | |
| 218 | Back-up well field development area |
| [219 | Hayden Bridge former fish hatchery intake modifications] |
| [220 | Laurel Hill reservoir (850)] |
| 221 | Laurel Hill reservoir and pump station (975) |
| 222 | Laurel Hill pump station (1150) |
| [223 | Shasta reservoir (1150)] |
| 224 | Dillard reservoir (975) and pump station (1150) |
| 225 | Dillard reservoir (1150) |
| [226 | Elliot reservoir (607)] |
| [227 | Willamette reservoir (1325)] |
| 228 | Willamette pump station (1500) |
| [229 | Timberline reservoir (1100)] |
| [230 | Timberline pump station (1325)] |
| 231 | Gimple Hill reservoir (975) and pump station |
| 232 | Green Hill reservoir (800) |
| 233 | Green Hill reservoir (975) |
| 234 | Green Hill pump station (975) |
| [235 | Westside/Cantrell Hill reservoir (607)] |
| [236 | Westside Transmission Main] |
| [237 | Glenwood/LCC Basin intertie] |
| 238 | <i>Santa Clara pump station and 5 MG reservoir at the existing Santa Clara pump station and reservoir site.</i> |
| 239 | <i>College Hill 5 MG reservoir and decommission existing College Hill 15 MG reservoir</i> |
| 240 | <i>Construct 10,000 feet of 36-inch pipeline in 23rd Avenue and Alder Street</i> |

| | |
|------------|---|
| 241 | <i>Elliott 5 MG reservoir</i> |
| 242 | <i>5 MG Reservoir at either the Santa Clara site, Elliott site, or Oak Hill/Cantrell Rd site</i> |

- Table 3 of the Eugene Metropolitan Area Public Facilities and Services Plan is amended as follows:

**Table 3
City of Eugene Wastewater System Improvement Projects**

| Project Number | Project Name/Description |
|-------------------|---|
| Short-Term | |
| [100] | West Eugene Bypass (48-inch) |
| [101] | North River Road pump station |
| [102] | North Willakenzie gravity sewers |
| [103] | North Enid pump station |
| 100 | <i>Bailey Hill/Gimpl Hill pump station</i> |
| [200]-101 | [North Willakenzie] <i>County Farm Road</i> pump station |
| Long-Term | |
| [103] 200 | North Enid pump station |
| [200] | North Willakenzie pump station |
| 201 | Awbrey Lane pump station |
| 202 | <i>Enid Road pump station and gravity line</i> |
| 203 | <i>North Delta Highway pump station</i> |
| 204 | <i>North Coburg Road pump station</i> |

- Table 5 of the Eugene Metropolitan Area Public Facilities and Services Plan is amended as follows:

**Table 5
City of Eugene Stormwater System Improvement Projects**

| Project Number | Project Name/Description |
|--|---|
| Willakenzie Basin Short-Term | |
| [1] | River Point Pond Outlet Channel |
| [2] | Federal Priority Project – Delta Ponds Enhancement |
| Willakenzie Basin Long-Term | |
| 3 | Gilham Road System Water Quality Facility |
| 4 | Gilham Road System Culvert Replacement |
| [5] | Ayers Pond Outfall Retrofit |
| 6 | Wetland Adjacent Coburg & County Farm Roads |
| 7 | Modify Ascot Park Open Waterway |
| Laurel Hill Basin Short-Term | |
| [8] | Riverview/Augusta Bypass and System Improvements |

| | |
|---|--|
| [9 | Minor System Between Riverview and Augusta] |
| 10 | I-5 and Augusta Water Quality Facility |
| 11 | Riverview/Augusta Minor Storm Drainage System Plan |
| Bethel Danebo Basin Short-Term | |
| [12 | Green Hill Tributary Stream Enhancements] |
| 13 | Culvert Replacement in Roosevelt Channel |
| [23 | West Irwin Storm] |
| Bethel Danebo Basin Long-Term | |
| 14 | Royal Node Infrastructure |
| 15 | Retrofit Empire Park Pond |
| 16 | Increase Pipe Sizes Along Bell Avenue |
| 17 | Green Hill Tributary Water Quality Facility |
| 18 | Wallis Street Culvert (Bertelsen Slough) |
| 19 | Increase Pipe Sizes Along Garfield Street |
| Amazon Creek Basin Short-Term | |
| [20 | Kinney Park Neighborhood Facility] |
| 21 | Federal Priority Project- Upper Amazon Creek Restoration |
| [22 | Martin Drive Pipe Improvements] |
| [24 | Hilyard Street Pipe Improvements] |
| Amazon Creek Basin Long-Term | |
| 25 | Federal Priority Project - Central Amazon Creek Restoration |
| 26 | Jackson Street Pipe Improvements |
| 27 | North Laurelwood Water Quality Facility |
| 28 | South Laurelwood Water Quality Facility |
| 29 | Pine View Neighborhood Facility |
| [30 | 43rd Avenue Pipe Improvements] |
| 31 | Morse Ranch Park Pipe Improvements |
| 32 | Option B - Laurelwood Flood Control Facilities and Pipe Improvements |
| 33 | Option B - Mt. Cavalry Pipe Improvements |
| 34 | Mt. Cavalry Water Quality Facility |
| 35 | Option A - Cleveland Street Flow Diversion |
| 36 | Option B - Brittany Street Pipe Improvements |
| 37 | Option B - Windsor Circle Pipe Improvements |
| 38 | Water Quality Facility West of Hawkins Lane |
| 39 | Water Quality Facility at Sam [R.] Reynolds Street |
| 40 | Water Quality Facility at Interior Street |
| Willow Creek Basin Short-Term | |
| 41 | Willow Creek - West Branch Culvert/Channel Retrofits |
| Willow Creek Basin Long-Term | |
| 42 | Realign/Restore Main Stem Willow Creek |
| 43 | Willow Creek - East Branch Culvert/Channel Retrofits |
| Willamette River Short-Term | |
| 44 | Federal Priority Project - Willamette River Bank Restoration |
| [45 | Polk Street Water Quality Facilities] |
| Willamette River Long-Term | |
| 46 | Federal Priority Project - Eugene Millrace Enhancements |
| City-wide Projects Short-Term (not mapped) | |
| | [Channel Easement Acquisition] |
| | Stormwater Rehabilitation |

| | |
|---|---|
| | Water Quality Facilities for High Source Areas |
| City-wide Projects Long-Term (not mapped) | |
| | [Channel Easement Acquisition] |
| | Stormwater Rehabilitation |
| | Water Quality Facilities for High Source Areas |
| [River Road-Santa Clara Basin Short-Term] | |
| [47] | Willamette Overflow Channel Upgrade |
| [48] | Irvington Road Drainage Improvements |
| [49] | River Road Drainage Improvements |
| River Road-Santa Clara Basin Long-Term | |
| 50 | Water Quality Project |
| 51 | Flat Creek Low Flow Channel Upgrade |
| 52 | Upgrade Existing Pipe |
| 53 | A-1 Channel Upgrade |
| 54 | Water Quality Facility |
| 55 | Flat Creek Water Quality Facility |
| 56 | Spring Creek Water Quality Project |
| 57 | Spring Creek Culvert Replacement |
| 58 | A-1 Channel, West Tributary Improvements |
| Clear Lake UGB Expansion Area Long-Term | |
| 59 | <i>Awbrey Lane at Highway 99 Culvert Upgrade/Channel Capacity Enhancements</i> |
| 60 | <i>Green Hill Road/ North of Old Airport Road Channel/Culvert Improvements</i> |
| 61 | <i>Green Hill Road to Awbrey Lane Channel/Culvert Improvements</i> |
| 62 | <i>Clear Lake Road Channel/Culvert Improvements</i> |
| 63 | <i>New Open Channel West of Terry Street (includes estimated acquisition cost)</i> |

- Map 1 of the Eugene Metropolitan Area Public Facilities and Services Plan entitled “Planned Water Facilities” is hereby amended as to remove the following projects:
 - 107 Green Hill/Airport mainline
 - 108 EWEB/Seneca 42-inch transmission line
 - 109 City View reservoir (800)
 - 110 Hayden Bridge Expansion and 10mg Reservoir and pump gallery
 - 219 Hayden Bridge-former fish hatchery intake modifications
 - 220 Laurel Hill reservoir (850)
 - 223 Shasta reservoir (1150)
 - 226 Elliot reservoir (607)
 - 227 Willamette reservoir (1325)
 - 229 Timberline reservoir (1100)
 - 230 Timberline pump station (1325)
 - 235 Westside/Cantrell Hill reservoir (607)
 - 236 Westside Transmission Main
 - 237 Glenwood/LCC Basin intertie

- Map 1 of the Eugene Metropolitan Area Public Facilities and Services Plan entitled “Planned Water Facilities” is hereby further amended to add the projects shown on the map attached to this Ordinance as Exhibit C-2, entitled “Amendment to Eugene-Springfield Public Facilities and Services Plan Map 1: Planned Water Facilities.”

- Map 2 of the Eugene Metropolitan Area Public Facilities and Services Plan entitled “Planned MWMC Wastewater Project Sites” is hereby amended as to remove the following projects:
 - 100 West Eugene Bypass (48-inch)
 - 101 North River Road pump station
 - 102 North Willakenzie gravity sewers
 - 103 North Enid pump station
 - 200 North Willakenzie pump station

- Map 2 of the Eugene Metropolitan Area Public Facilities and Services Plan entitled “Planned MWMC Wastewater Project Sites” is hereby further amended to add the projects shown on the map attached to this Ordinance as Exhibit C-2, entitled “Amendment to Eugene-Springfield Public Facilities and Services Plan Map 2: Planned MWMC Wastewater Project Sites.”

- Map 3 of the Eugene Metropolitan Area Public Facilities and Services Plan entitled “Planned Stormwater Facilities” is hereby amended as to remove the following projects:
 - 1 River Point Pond Outlet Channel
 - 2 Federal Priority Project- Delta Ponds Enhancement
 - 5 Ayers Pond Outfall Retrofit
 - 8 Riverview/Augusta Bypass and System Improvements
 - 9 Minor System Between Riverview and Augusta
 - 12 Green Hill Tributary Stream Enhancements
 - 23 West Irwin Storm
 - 20 Kinney Park Neighborhood Facility
 - 22 Martin Drive Pipe Improvements
 - 24 Hilyard Street Pipe Improvements
 - 30 43rd Avenue Pipe Improvements
 - 45 Polk Street Water Quality Facilities
 - 47 Willamette Overflow Channel Upgrade
 - 48 Irvington Road Drainage Improvements
 - 49 River Road Drainage Improvements

- Map 3 of the Eugene Metropolitan Area Public Facilities and Services Plan entitled “Planned Stormwater Facilities” is hereby further amended to add the projects shown on the map attached to this Ordinance as Exhibit C-2, entitled “Amendment to Eugene-Springfield Public Facilities and Services Plan Map 3: Planned Stormwater Facilities.”

- Map 8 of the Eugene Metropolitan Area Public Facilities and Services Plan entitled “Public Service Availability in the Eugene-Springfield Metropolitan Area” is hereby amended as to remove the following projects:

Eugene Water & Electric Board Water System Improvement Projects:

- 107 Green Hill/Airport mainline
- 108 EWEB/Seneca 42-inch transmission line
- 109 City View reservoir (800)
- 110 Hayden Bridge Expansion and 10mg Reservoir and pump gallery
- 219 Hayden Bridge-former fish hatchery intake modifications
- 220 Laurel Hill reservoir (850)
- 223 Shasta reservoir (1150)
- 226 Elliot reservoir (607)
- 227 Willamette reservoir (1325)
- 229 Timberline reservoir (1100)
- 230 Timberline pump station (1325)
- 235 Westside/Cantrell Hill reservoir (607)
- 236 Westside Transmission Main
- 237 Glenwood/LCC Basin intertie

City of Eugene Wastewater System Improvement Projects

- 100 West Eugene Bypass (48-inch)
- 101 North River Road pump station
- 102 North Willakenzie gravity sewers
- 103 North Enid pump station
- 200 North Willakenzie pump station

City of Eugene Stormwater System Improvement Projects

- 1 River Point Pond Outlet Channel
- 2 Federal Priority Project- Delta Ponds Enhancement
- 5 Ayers Pond Outfall Retrofit
- 8 Riverview/Augusta Bypass and System Improvements
- 9 Minor System Between Riverview and Augusta
- 12 Green Hill Tributary Stream Enhancements
- 23 West Irwin Storm
- 20 Kinney Park Neighborhood Facility
- 22 Martin Drive Pipe Improvements
- 24 Hilyard Street Pipe Improvements
- 30 43rd Avenue Pipe Improvements
- 45 Polk Street Water Quality Facilities
- 47 Willamette Overflow Channel Upgrade
- 48 Irvington Road Drainage Improvements
- 49 River Road Drainage Improvements

- Map 8 of the Eugene Metropolitan Area Public Facilities and Services Plan entitled “Public Service Availability in the Eugene-Springfield Metropolitan Area” is hereby further amended to add the projects shown on the map attached to this Ordinance as Exhibit C-2, entitled “Amendment to Eugene-Springfield Public Facilities and Services Plan Map 8: Public Service Availability in the Eugene-Springfield Metropolitan Area.”
- Table 13 of the Eugene Metropolitan Area Public Facilities and Services Plan is amended as follows:

**Table 13
EWEB Water System Improvements, Estimated Costs, and Timing**

| Project Number | Project Name/Description | Cost (\$000) | Estimated Completion Year |
|-----------------------|---|---------------------|----------------------------------|
| Short-Term | | | |
| [107] | Green Hill/Airport mainline | 400 | 1999] |
| [108] | EWEB/Seneca 42 inch transmission line | 6,600 | 2001] |
| [109] | City View reservoir (800) | 800 | 2001] |
| [110] | Hayden Bridge Expansion and 10mg Reservoir and pump gallery | 21,100 | 2003] |
| 111 | Hawkins Hill reservoir seismic upgrades | 1,927 | 2016 |
| 112 | Willamette reservoir (800) replacement | 1,500 | 2016 |
| 113 | Shasta constant run pump station (1150) | 500 | 2016 |
| 114 | Willamette pump station (975) | 857 | 2017 |
| 115 | Crenshaw pump station (800) | 925 | 2018 |
| 116 | Hawkins View pump station (1150) | 953 | 2019 |
| 117 | Crest pump station (1150) replacement | 982 | 2020 |
| Long-Term | | | |
| 218 | Back-up well field development area | 10,100 | 2007-2035+ |
| [219] | Hayden Bridge former fish hatchery intake modifications | 1,000 | 2010+] |
| [220] | Laurel Hill reservoir (850) | 830 | 2005] |
| 221 | Laurel Hill reservoir and pump station (975) | 1,000 | [2007] 2022-2032* |
| 222 | Laurel Hill pump station (1150) | 150 | [2007] 2022-2032* |
| [223] | Shasta reservoir (1150)] | 500 | 2006] |
| 224 | Dillard reservoir (975) and pump station (1150) | 750 | [2010+]2022-2032* |
| 225 | Dillard reservoir (1150) | 500 | [2010+]2022-2032* |
| [226] | Elliot reservoir (607)] | 5,000 | 2010+] |
| [227] | Willamette reservoir (1325)] | 500 | 2010+] |
| 228 | Willamette pump station (1500) | 150 | 2005-08 2022-2032* |
| [229] | Timberline reservoir (1100) | 500 | 2008] |
| [230] | Timberline pump station (1325) | 150 | 2008] |
| 231 | Gimple Hill reservoir (975) and pump station | 750 | [2010+] 2022-2032* |

| | | | |
|------------|---|---------------|---------------------------|
| 232 | Green Hill reservoir (800) | 500 | [2010+] 2022-2032* |
| 233 | Green Hill reservoir (975) | 500 | [2010+] 2022-2032* |
| 234 | Green Hill pump station (975) | 250 | [2010+] 2022-2032* |
| [235] | Westside/Cantrell Hill reservoir (607) | 10,000 | 2010+] |
| [236] | Westside Transmission Main | 1,000 | 2010+] |
| [237] | Glenwood/LCC Basin intertie | 500 | 2010] |
| 238 | Santa Clara pump station and 5 MG reservoir at the existing Santa Clara pump station and reservoir site. | 12,442 | 2024 |
| 239 | College Hill 5 MG reservoir and decommission existing College Hill 15 MG reservoir | 9,370 | 2028 |
| 240 | Construct 10,000 feet of 36-inch pipeline in 23rd Avenue and Alder Street | 8,971 | 2030 |
| 241 | Elliott 5 MG reservoir | 9,370 | 2031 |
| 242 | 5 MG Reservoir at either the Santa Clara site, Elliott site, or Oak Hill/Cantrell Rd site | 9,370 | 2032 |

*Timing is dependent upon development pressure

- Table 15 of the Eugene Metropolitan Area Public Facilities and Services Plan is amended as follows:

**Table 15
City of Eugene
Wastewater System Improvements, Estimated Costs, and Timing**

| Project Number | Project Name/Description | Cost (\$000) | Estimated Completion Year |
|-------------------|--|--------------|---------------------------|
| Short-Term | | | |
| [100] | West Eugene Bypass (48-inch) | 3,350 | 2002] |
| [101] | North River Road pump station | 315 | 2002] |
| [102] | North Willakenzie gravity sewers | 666 | 2004] |
| [103] | North Enid pump station | 774 | 2005] |
| 100 | Bailey Hill/Gimpl Hill pump station | 800 | 2016-2021 |
| [200]101 | [North Willakenzie] County Farm Road pump station | 645 | [2008] 2016-2021 |
| Long-Term | | | |
| [103]200 | North Enid pump station | 774 | [2005] 2022-2032 |
| [200] | North Willakenzie pump station | 645 | 2008] |
| 201 | Awbrey Lane pump station | 300 | [2008] 2022-2032 |
| 202 | Enid Road pump station and gravity line | 4,000 | 2022-2032 |
| 203 | North Delta Highway pump station | 600 | 2022-2032 |
| 204 | North Coburg Road pump station | 600 | 2022-2032 |

- Table 17 of the Eugene Metropolitan Area Public Facilities and Services Plan is amended as follows:

Table 17
City of Eugene Stormwater System Improvements, Estimated Costs, and Timing

| Project Number | Project Name/Description | Cost (\$000) | Estimated Completion Year |
|---------------------------------------|--|--------------|------------------------------|
| [Willakenzie Basin Short-Term] | | | |
| [1] | River Point Pond Outlet Channel | 1,636 | 2000-2006] |
| [2] | Federal Priority Project – Delta Ponds Enhancement | 2,800 | 2000-2006] |
| Willakenzie Basin Long-Term | | | |
| 3 | Gilham Road System Water Quality Facility | 654 | [2007-2011] 2022-2032 |
| 4 | Gilham Road System Culvert Replacement | 32 | [2007-2011] 2022-2032 |
| [5] | Ayers Pond Outfall Retrofit | 774 | 2007-2011] |
| 6 | Wetland Adjacent Coburg & County Farm Roads | 1,152 | 2012-2035] 2022-2032 |
| 7 | Modify Ascot Park Open Waterway | 662 | 2012-2035] 2022-2032 |
| Laurel Hill Basin Short-Term | | | |
| [8] | Riverview/Augusta Bypass and System Improvements | 650 | 2000-2006] |
| [9] | Minor System Between Riverview and Augusta | 59* | 2000-2006] |
| 10 | I-5 and Augusta Water Quality Facility | 1,246* | [2000-2006] 2016-2021 |
| 11 | Riverview/Augusta Minor Storm Drainage System Plan | 48 | [2000-2006] 2016-2021 |
| Bethel Danebo Basin Short-Term | | | |
| [12] | Green Hill Tributary Stream Enhancements | 800 | 2000-2006] |
| 13 | Culvert Replacement in Roosevelt Channel | 192 | [2000-2006] 2016-2021 |
| [23] | West Irwin Storm | 295 | 2001] |
| Bethel Danebo Basin Long-Term | | | |
| 14 | Royal Node Infrastructure | 1,859 | [2007-2011] 2022-2032 |
| 15 | Retrofit Empire Park Pond | 571 | [2007-2011] 2022-2032 |
| 16 | Increase Pipe Sizes Along Bell Avenue | 795 | [2012-2035] 2022-2032 |
| 17 | Green Hill Tributary Water Quality Facility | 749 | [2012-2035] 2022-2032 |
| 18 | Wallis Street Culvert (Bertelsen Slough) | 660 | [2012-2035] 2022-2032 |
| 19 | Increase Pipe Sizes Along Garfield Street | 1,620 | [2012-2035] 2022-2032 |
| Amazon Creek Basin Short-Term | | | |
| [20] | Kinney Park Neighborhood Facility | 665 | 2000-2006] |
| 21 | Federal Priority Project- Upper Amazon Creek Restoration | 3,300 | 2000-2006] 2016-2021 |
| [22] | Martin Drive Pipe Improvements | 92 | 2000-2006] |
| [24] | Hilyard Street Pipe Improvements | 290 | 2000-2006] |
| Amazon Creek Basin Long-Term | | | |
| 25 | Federal Priority Project - Central Amazon Creek Restoration | 3,500 | [2007-2011] 2022-2032 |
| 26 | Jackson Street Pipe Improvements | 77 | [2007-2011] 2022-2032 |
| 27 | North Laurelwood Water Quality Facility | 446 | [2007-2011] 2022-2032 |
| 28 | South Laurelwood Water Quality Facility | 371 | [2007-2011] 2022-2032 |
| 29 | Pine View Neighborhood Facility | 309 | [2007-2011] 2022-2032 |
| [30] | 43 rd Avenue Pipe Improvements | 2,156 | 2012-2035] |
| 31 | Morse Ranch Park Pipe Improvements | 1,004 | [2012-2035] 2022-2032 |
| 32 | Option B - Laurelwood Flood Control Facilities and Pipe Improvements | 2,008 | [2012-2035] 2022-2032 |
| 33 | Option B - Mt. Cavalry Pipe Improvements | 944 | [2012-2035] 2022-2032 |
| 34 | Mt. Cavalry Water Quality Facility | 470 | [2012-2035] 2022-2032 |

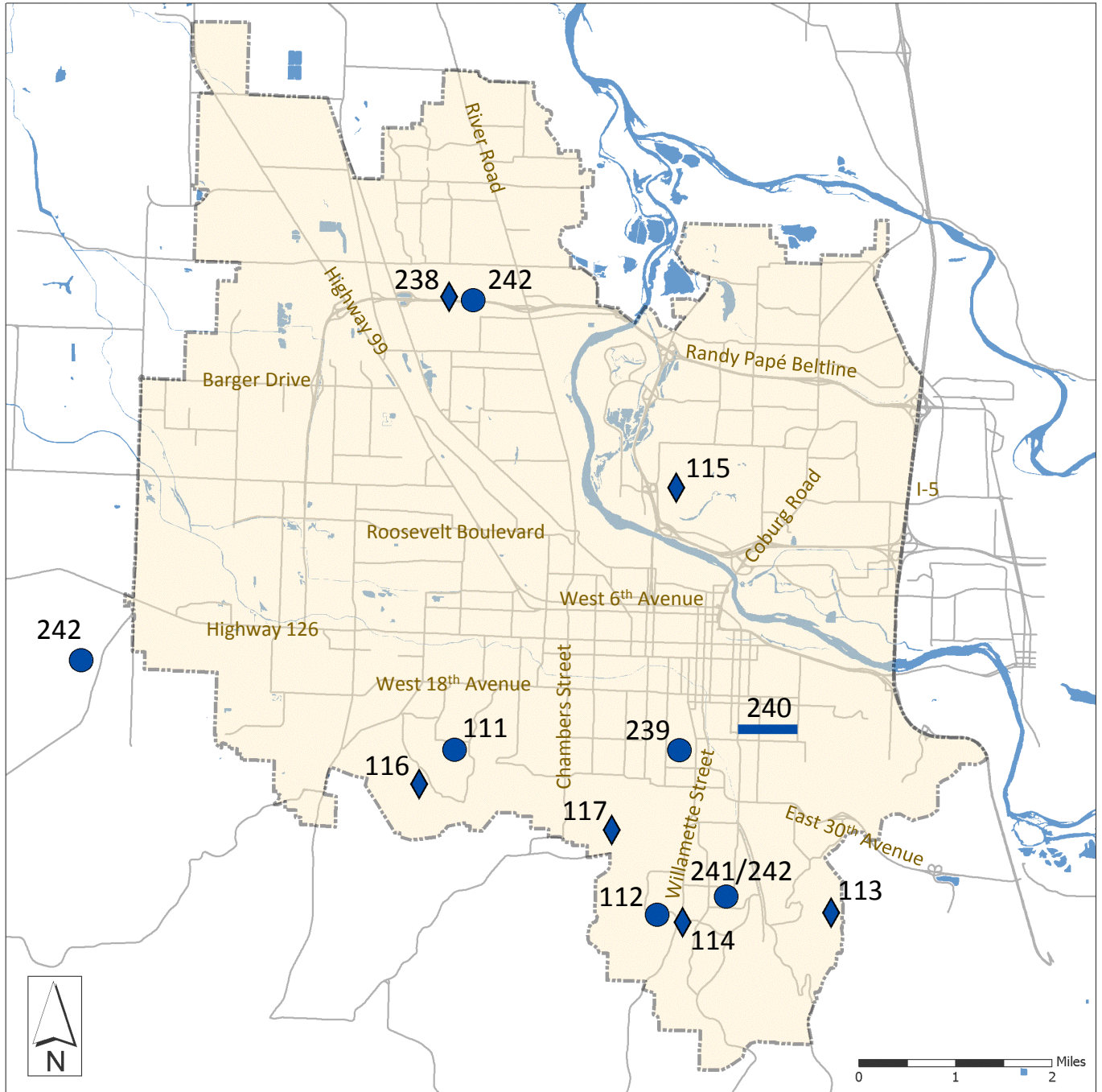
| | | | |
|---|--|-----------------------|------------------------------|
| 35 | Option A - Cleveland Street Flow Diversion | 422 | [2012-2035] 2022-2032 |
| 36 | Option B - Brittany Street Pipe Improvements | 308 | [2012-2035] 2022-2032 |
| 37 | Option B - Windsor Circle Pipe Improvements | 968 | [2012-2035] 2022-2032 |
| 38 | Water Quality Facility West of Hawkins Lane | 625 | [2012-2035] 2022-2032 |
| 39 | Water Quality Facility at Sam [R.] Reynolds Street | 487 | [2012-2035] 2022-2032 |
| 40 | Water Quality Facility at Interior Street | 328 | [2012-2035] 2022-2032 |
| Willow Creek Basin Short-Term | | | |
| 41 | Willow Creek - West Branch Culvert/Channel Retrofits | 36 | [2000-2006] 2016-2021 |
| Willow Creek Basin Long-Term | | | |
| 42 | Realign/Restore Main Stem Willow Creek | 2,689 | [2012-2035] 2022-2032 |
| 43 | Willow Creek - East Branch Culvert/Channel Retrofits | 980 | [2012-2035] 2022-2032 |
| Willamette River Short-Term | | | |
| 44 | Federal Priority Project - Willamette River Bank Restoration | 1,000 | [2000-2006] 2016-2021 |
| [45] | Polk Street Water Quality Facilities | 357 | 2000-2006] |
| Willamette River Long-Term | | | |
| 46 | Federal Priority Project - Eugene Millrace Enhancements | 2,500 | 2007-2011] |
| City-wide Projects Short-Term (not mapped) | | | |
| | [Channel Easement Acquisition | 950 | 2000-2006] |
| | Stormwater Rehabilitation | [4,579] 6,075 | [2000-2006] 2016-2021 |
| | Water Quality Facilities for High Source Areas | 2,200 | 2016-2021 |
| City-wide Projects Long-Term (not mapped) | | | |
| | [Channel Easement Acquisition | 1,500 | 2007-2035] |
| | Stormwater Rehabilitation | [7,500] 11,100 | [2007-2035] 2022-2032 |
| | Water Quality Facilities for High Source Areas | 4,000 | 2022-2032 |
| [River Road-Santa Clara Basin Short Term] | | | |
| [47] | Willamette Overflow Channel Upgrade | 596 | 2000-2006] |
| [48] | Irvington Road Drainage Improvements | 145 | 2000-2006] |
| [49] | River Road Drainage Improvements | 40 | 2000-2006] |
| River Road-Santa Clara Basin Long-Term | | | |
| 50 | Water Quality Project | 65 | [2007-2011] 2022-2032 |
| 51 | Flat Creek Low Flow Channel Upgrade | 100 | [2007-2011] 2022-2032 |
| 52 | Upgrade Existing Pipe | 97 | [2007-2011] 2022-2032 |
| 53 | A-1 Channel Upgrade | TBD | [2007-2011] 2022-2032 |
| 54 | Water Quality Facility | TBD | [2007-2011] 2022-2032 |
| 55 | Flat Creek Water Quality Facility | TBD | [2007-2011] 2022-2032 |
| 56 | Spring Creek Water Quality Project | TBD | [2007-2011] 2022-2032 |
| 57 | Spring Creek Culvert Replacement | TBD | [2007-2012] 2022-2032 |
| 58 | A-1 Channel, West Tributary Improvements | TBD | [2012-2020] 2022-2032 |
| Clear Lake UGB Expansion Area Long-Term | | | |
| 59 | Awbrey Lane at Highway 99 Culvert Upgrade/Channel Capacity Enhancements | 390 | 2022-2032 |
| 60 | Green Hill Road/ North of Old Airport Road Channel/Culvert Improvements | 1,625 | 2022-2032 |
| 61 | Green Hill Road to Awbrey Lane Channel/Culvert Improvements | 880 | 2022-2032 |
| 62 | Clear Lake Road Channel/Culvert Improvements | 640 | 2022-2032 |

| | | | |
|-----------|---|------------|------------------|
| 63 | <i>New Open Channel West of Terry Street (includes estimated acquisition cost)</i> | 400 | 2022-2032 |
|-----------|---|------------|------------------|

*Total project costs do not include acquisition costs (unless otherwise noted).

Amendments to Eugene-Springfield Public Facilities and Services Plan

Map 1: Planned Water Facilities



Water Projects

- ◆ Pump Station
- Reservoir
- Transmission Line

— Eugene Urban Growth Boundary

- Major Streets
- Water Bodies

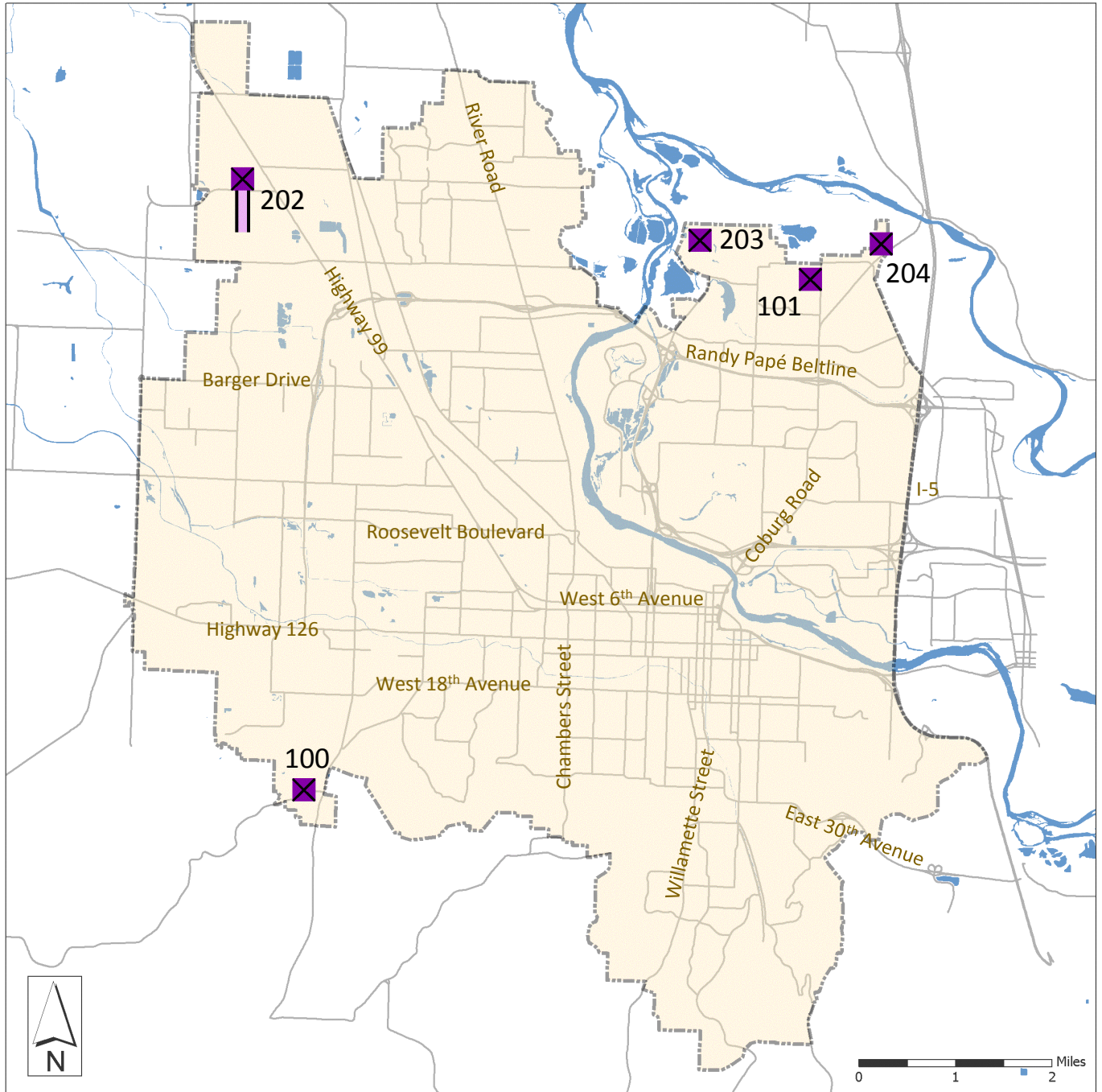


Final

Caution:
This map is based on imprecise
source data, subject to change, and
for general reference only.

Amendments to Eugene-Springfield Public Facilities and Services Plan

Map 2: Planned MWMC Wastewater Project Sites



Wastewater Projects Eugene Urban Growth Boundary

Local Pump Station Major Streets

Wastewater Lines Water Bodies

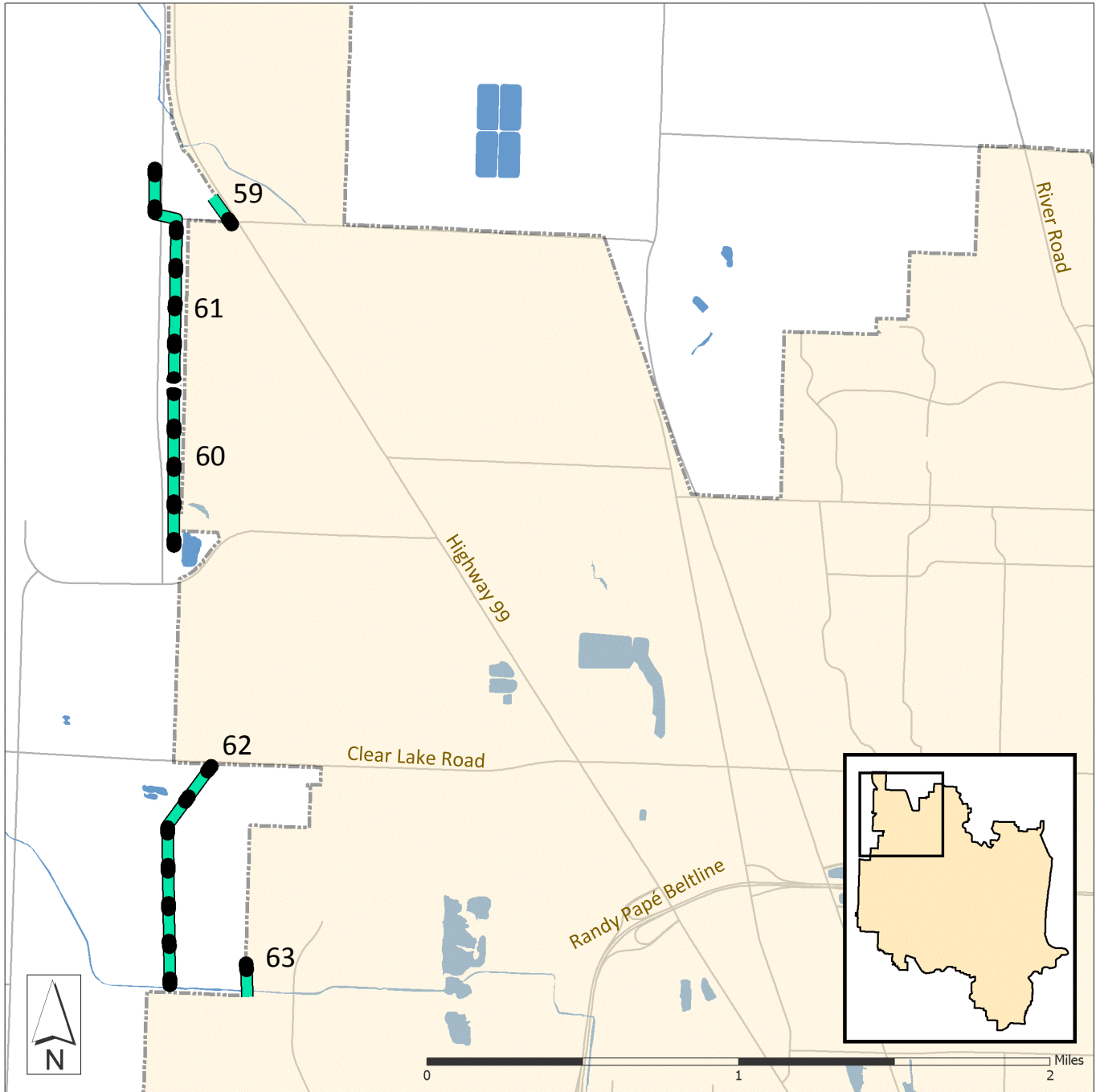


Final





Caution:
This map is based on imprecise
source data, subject to change, and
for general reference only.

Amendments to Eugene-Springfield Public Facilities and Services Plan

Map 3: Planned Stormwater Facilities



Stormwater Projects

-  Drainage/Channel Improvements
-  Eugene Urban Growth Boundary
-  Major Streets
-  Water Bodies

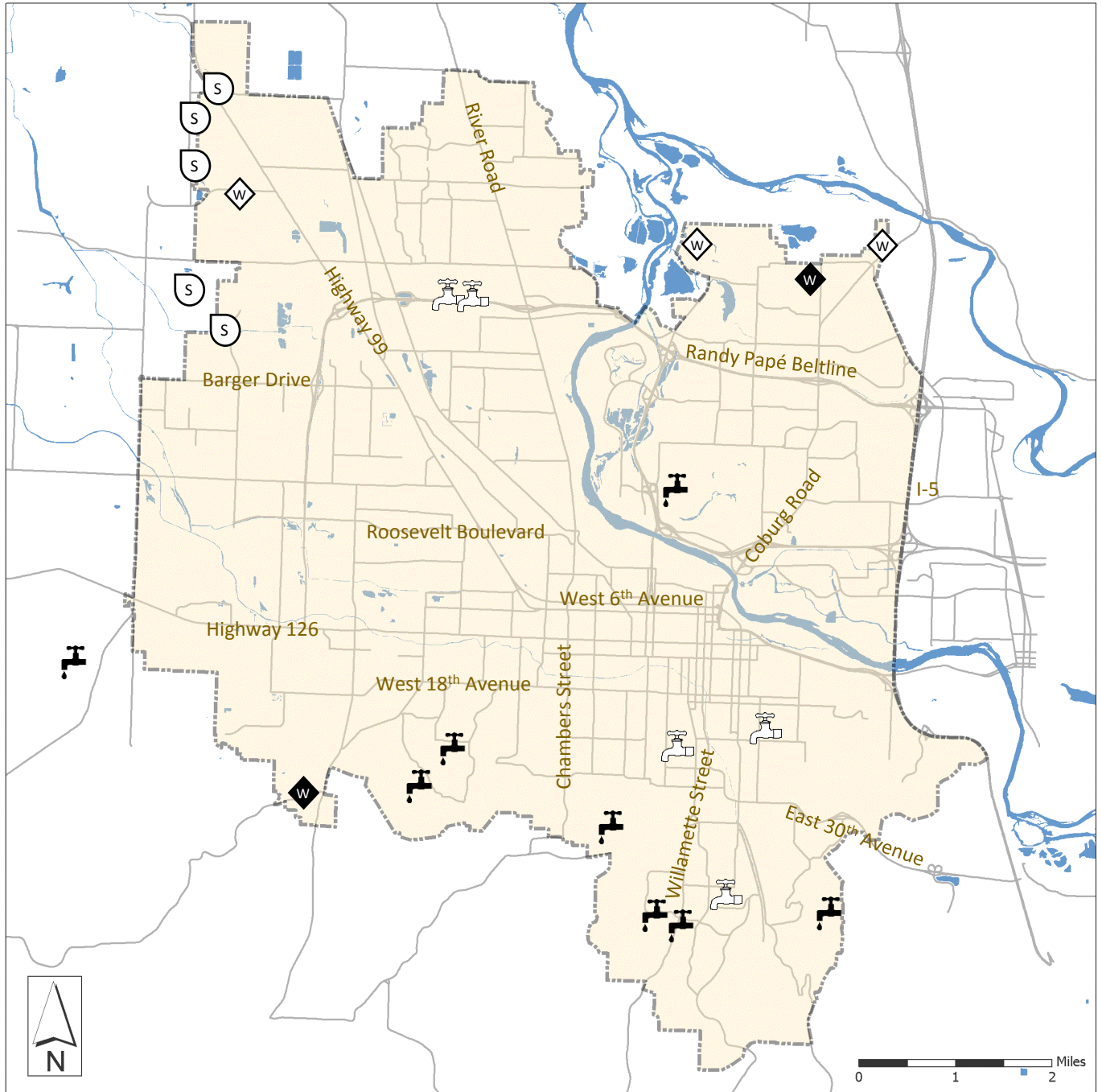


Final

Caution:
This map is based on imprecise
source data, subject to change, and
for general reference only.

Amendments to Eugene-Springfield Public Facilities and Services Plan

Map 8: Public Service Availability



- | | | |
|---------------|----------------------------|---------------------------|
| Eugene UGB | <i>Short Term Projects</i> | <i>Long Term Projects</i> |
| Major Streets | Water | Water |
| Water Bodies | Wastewater | Wastewater |
| | Stormwater | Stormwater |



Final

Caution:
This map is based on imprecise
source data, subject to change, and
for general reference only.