

REGIONAL FOCUS

S&DS Website Adds Translation, Other Features

The S&DS (www.sdslane.org) website has again been updated with new features for usability, highlighted by the new ability to translate text on each page of the site into Spanish and other common languages.

Using the SYSTRANLinks service, visitors to the S&DS website can now select the language of their choice, click once to translate, and see the results in seconds. In addition to Spanish, the service can translate the site into French, Japanese, simplified Chinese, Russian and

Dutch. The on-demand nature of the service also means that all translations are up-to-date, including all of the most recent content changes and additions.

The new translation ability is just the latest example of the ongoing upgrades to make the S&DS website a valuable tool for providing information to the public. Recently, the website underwent a complete makeover, adding user-definable text sizing, easy-to-use navigation, and more current items of interest.



THIS ISSUE

- 2 Director's Desk
- 3 Needs Assessment Document
Determines Funding Levels
Staff Profile
- 4 Senior Services Advisory
Council Appoints 12
New Members
- 5 Demographic Information
- 6 Oregon Planning Institute
2007
- 7 Third Annual Native Caring
Conference Highlights
Outreach Efforts
- 8 Creswell Comprehensive Land
Use Plan Update
- 9 Steve Gordon's Career
Celebrated
- 10 New Layers and Query Options
in Lane Maps
- 11 LCOG Promotes Environmental
Stewardship
- 12 Calendar

**PLEASE HELP
LCOG SAVE PAPER**
Let us know if you
prefer to receive the
REGIONAL FOCUS
electronically.



George Kloeppe
LCOG EXECUTIVE DIRECTOR

MEMBER AGENCIES

- Lane County
- City of Eugene
- City of Springfield
- City of Cottage Grove
- City of Florence
- City of Junction City
- City of Oakridge
- City of Veneta
- City of Creswell
- City of Dunes City
- City of Lowell
- City of Coburg
- City of Westfir
- School District 4J
- School District 19
- School District 52
- School District 68
- Lane Community College
- Eugene Water & Electric Board
- Emerald People's Utility District
- Port of Siuslaw
- Lane Education Service District
- Western Lane Ambulance District
- Willamalane Park & Recreation District
- Fern Ridge Library District
- Lane Library District
- Siuslaw Valley Rural Fire District
- Lane Transit District

Director's Desk

Employees' annual performance reviews, or personnel evaluations, are never published in columns such as this—right? Well, yes, that is true. LCOG's performance review process is structured to be confidential. Ideally, it is a constructive, two-way communication about staff members' performance of their jobs, as well as a consideration of employees' needs, goals and expectations for the future. It is an important internal process, but not suitable for publication.

On the other hand, the biennial Performance Review of LCOG's Executive Director falls into a somewhat different category. Elements of the Review are already public record, because they are discussed in public meetings. And, perhaps more importantly, the exercise of looking carefully at the work of the Executive Director is also useful in assessing, and making improvements to, the agency itself.

This year, the biennial Performance Review process was conducted using a "360 Degree" evaluation process, designed by True North Consulting. In a secure web-based environment, staff, policy makers, member jurisdictions and other "stakeholders" were encouraged to provide input. Eighty-one people took the opportunity to do so. Such participation is greatly appreciated. The data received, coupled with that from the Review done in 2005, provided an interesting picture—not always a clear picture, but one rich in diversity and color.

For the sake of my fragile ego, it should be noted that very positive observations were made and "scores" had increased in the areas where views were sought in both this year and

two years ago. It was a good review; and I was pleased. That stated and out of the way, it is always the "constructive criticism" that best informs growth and change.

I believe that in important ways, the performance of the agency was assessed in this Review. If that is true, let me share four of the identified areas where respondents felt improvement could be made. Please note that, while the focus is on the Executive Director, the observations also reflect perceived needs for LCOG to continue to grow and improve.

- There was a significant desire for increased presence, visibility, accessibility and "broad community leadership."
- There was a desire for a clearer, better articulated, vision for the future.
- There was a desire for a better understanding of the role that LCOG should play in public policy matters.
- There was a desire for clear and timely communication with members, staff and partner organizations.

Yes, the LCOG Executive Director will take to heart these and other recommendations made. But the extended LCOG family that might read these words could do likewise. There are many hands that lift an organization such as this to a position of success. Your help in the pursuit of continued improvement is certainly appreciated.



Needs Assessment Document Determines Funding Levels

A Needs Assessment of Seniors & Persons with Disabilities in Lane County was completed in December of 2006 and the material gathered through this assessment was used extensively to determine the funding levels and services to be provided by the agency for program year 2007-08.

To complete the assessment compiled and analyzed data from a variety of sources, including the 2000 U.S. Census, the 2005 American Community Survey, the State of Caring 2004 Community Needs and Assets Study conducted by United Way of Lane County, S&DS client and service data, and secondary sources. It also sought input from community members, including consumers, providers of services, elected officials and other interested parties. From this work, demographic profiles for both populations were created, needs were identified, and recommendations developed.

The Needs Assessment underscored the critical importance of responding to the ever-growing population of seniors and persons with disabilities with enough services to match demand. The numbers of adults age 65 and older will more than double nationally by 2030. The Oregon Office of Economic Analysis projections indicate that the senior population will more than triple by 2040.

The S&DS Forums identified needed services for seniors and persons with disabilities including Senior Meals (both Meals on Wheels and Group Meals), Senior Connections services, advocacy, Special Transportation, Oregon Project Independence (in-home service), information and

referral, and Family Support Caregiver Services. Additional services identified by a number of forum participants included recreation/creative expression/exercise, caregivers training, mental health/bereavement/senior counseling, money management assistance, free or low cost dental care, Ombudsman Recruiting and Screening, Elder Help volunteers, senior legal assistance, adult day care, medication education/RX assistance, and public guardianship.

Drawing on the material presented in the report, S&DS concluded that seniors and persons with disabilities are experiencing similar problems. While their needs are not identical, their top areas of concern tend to be:

- Assistance with meals
- Assistance with in-home services (home care and personal care)
- Problems obtaining information on available resources and services
- Caregiver support services
- Special transportation
- Advocacy assistance for needs
- Assistance with Money Management and senior legal issues
- Difficulty paying for medical and dental care
- Bereavement and Mental Health Counseling

For additional information about the S&DS Needs Assessment contact Patti Little, (541) 682-4137 or plittle@lcog.org.



Paula Gourley

SENIOR CONNECTIONS
PROGRAM MANAGER

Senior & Disabled Services was pleased to welcome Paula Gourley as the new Program Supervisor for Senior Connections on August 1, 2007. Paula brings a unique creative ability, strong business and organizational skills, and a keen interest in helping others achieve independence.

After 12 years in the medical field as an X-Ray and Ultrasound Technologist, she changed careers to study hand bookbinding in the United States, France, and Belgium. Returning from abroad, Paula developed a Master's level program in Book Arts at the University of Alabama.

See **STAFF PROFILE** page 4

From STAFF PROFILE page 5

Moving to Eugene nine years ago, Paula started her own micro-business at the Saturday Market and worked with Lane Micro-Business as the Education and Resource Coordinator. In this capacity, she referred many participants to much-needed social services within the community and helped small business owners develop practices to grow their businesses.

After the Oregon Workforce grant that funded the Coordinator position ended, Paula was hired by the Pearl Buck Center, where she developed the Life Enhancing Activities Program (LEAP) from the ground up.

Paula can be reached at (541) 682-4374 or pgourley@lcog.org.

Senior Services Advisory Council Appoints 12 New Members

Senior & Disabled Services has announced the appointment of the 12 new members of the Senior Services Advisory Council (SSAC). Council members are appointed for a three-year term with the ability to renew the term once. The new members of the SSAC include:

ROD HOLST

Mr. Holst is a retired investment broker who currently owns a local business which assists seniors and their families with placement in licensed community-based facilities. He is a member of the Alzheimer's Association Educational Advisory Board, M.O.S.S. (Marketing of Senior Services), and the Southtowne Rotary Club, and delivers Meals on Wheels.

KATHY MANN

Ms. Mann is an active participant with the Senior Companion Program. In particular, she assists people with visual impairments, as she has personal experience in this area. Previously Ms. Mann worked in the retail and insurance business. Ms. Mann also counsels people with disabilities through the Commission for the Blind.

DONNA PETERSON

Ms. Peterson holds a master's degree with a concentration in elder abuse, Alzheimer's disease and related dementias. She has been the instructor for the Adult Foster Home Certification at LCC, the education chairperson for the Cascade Coast Office of the Alzheimer's Association, was a charter member of LCC's Center for Leisure and Living, and has served on many boards and professional organizations in the field. Ms.

Peterson is currently the Coordinator for the 1st Annual Alzheimer's Conference to be held on June 2, 2007.

DR. DWAYNE (SPARKY) RICE

Dr. Rice has been a family physician in Lane County for 30 years. During that time, he served as the Medical Director for Riverpark and Valley West nursing facilities for 25 and 20 years respectively. For the past five years, he has been a participant in the Caring Visitors program at the First United Methodist Church. Additionally, Dr. Rice is the Chairperson of "Justice and Mission Matters" at the First United Methodist Church.

BETTY JANE SHIRLEY

Ms. Shirley has many years of experience working in a medical laboratory within a hospital environment. She has been very active in the League of Women Voters and has served on the Roseburg Planning Commission. Ms. Shirley has extensive personal experience with issues related to care giving, as she has cared for her husband who is currently a resident of a local licensed facility.

MELISSA BOWERS

Ms. Bowers works for the City of Junction City as the Director of the Viking Sal Senior Center. The center houses the Junction City Senior Meals Program and the Senior Connections Program. Ms. Bowers is a member of the Lane Coalition of Senior Programs, the Section for Older Adult Resources (SOAR) of Oregon Parks and Recreation, the Senior Meals Advisory Committee, and the Health Steps to Aging Committee.



SUSAN BUSLER

Ms. Busler is a faculty member for the Oregon State University Extension Service. In this capacity, she develops and delivers educational programs to people of all ages, including seniors. She has served on the Advisory Board for OASIS and a myriad of Extension-related committees dealing with senior issues. She has also worked with Meals on Wheels programming in Eugene and Springfield.

CARMEN DAKE

For more than 20 years, Ms. Dake has been working with seniors in the Cottage Grove community. She has worked as the manager of Jefferson Park, an apartment complex serving low-income senior and disabled residents. Currently, she is the owner/operator of Magnolia Village Memory Care, an assisted living facility in the Cottage Grove area. Ms. Dake has been active in the Rotary Club and the Chamber of Commerce. She has also participated on Alzheimer support groups and the Community Health Committee, which fosters health education in the Cottage Grove area.

CATHY DAVENPORT

Ms. Davenport is currently an RN Care Coordinator at Barger Clinic. She has worked with seniors for many years, including working as a case manager and adult protective services worker at S&DS, and with the State of Oregon in the Client Care Monitoring Unit. Ms. Davenport has extensive experience in the area of quality care for seniors and people with disabilities, and has also interfaced with many community partners such as Volunteers in Medicine, Shelter Care, Riverstone Clinic, and White Bird.

MEGAN O'CONNOR

Ms O'Connor has 20+ years of experience working in the administration field of civil law. She also has 10 years of experience working with non-profit organizations. She has been a member of numerous non-profit boards. Ms. O'Connor has first hand experience providing round-the-clock care to her mother. She is currently the manager of the RSVP program for United Way of Lane County.

MARY ELLEN RILEY

Ms. Riley was on the cutting edge of community-based care in the early 1980's. She began her career providing care to people with disabilities in her own home. Since then, she has owned 4 foster care homes and now operates a 42 bed residential care facility which provides housing and long term care to brain injured, severely disabled adults and seniors. She is a member of the Oregon Health Care Association and has extensive experience working on boards and committees.

YVAUGHN TOMPKINS

Ms. Tompkins has 31 years of public service to the citizens of Lane County. During her tenure, she has worked with a wide variety of people and age ranges. She has effectively directed youth programs and senior programs. She has served on a variety of city, community agency, task teams, boards and organization committees. Ms. Tompkins is currently the manager of the Campbell Senior Center in Eugene.

For additional information regarding the Senior Services Advisory Council, contact Patti Little at 682-4137 or plittle@lcog.org, or Kay Metzger at 682-4432 or kmetzger@lcog.org.

Demographic Information

From the 2006 Needs Assessment of Lane County Seniors and Persons with Disabilities

- In 2000, there were 42,954 seniors (65+) in Lane County, which was 13.3% of the total population. According to the 2005 American Community Survey, there were 44,675 people 65+ in Lane County, which was 13.6% of the population. By the year 2015, the Lane County 65+ population is projected to be 59,560, or 16% of the population.
- Overall, Lane County has a slightly higher percentage of people age 65+ than the State of Oregon or the nation.

See **DEMOGRAPHIC** page 6



From DEMOGRAPHIC page 5

- Nearly 16%, or 35,132, of Lane County residents between the ages of 16-64 have some form of a disability. Seniors age 65+ had a greater percentage of individuals reporting a disability, at almost 42%. In total, Lane County had a higher percentage of residents (17.4%) reporting a disability than the statewide average (15%).
- The most frequent primary diagnoses for S&DS' younger disabled community-based, long-term-care clients are neurological, musculoskeletal, psychiatric, and cardiovascular impairments. The most frequent primary diagnoses for senior clients include cardiovascular, musculoskeletal, psychiatric, and neurological disorders.

See DEMOGRAPHIC page 7

Oregon Planning Institute 2007



Patty Limerick

The 2007 Oregon Planning Institute, titled "Planning Full Spectrum", will be held at the Lillis Business Complex on the University of Oregon campus September 12-15. The Oregon Planning Institute (OPI) functions as a venue for land use planners and professionals from related fields to discuss current issues facing the state. The keynote address, entitled "Hindsight and Foresight in a Region in a Rush," will be presented by Patty Limerick. Ms. Limerick is a Professor of History, Faculty Director, and Chair of the Board of the Center of the American West at the University of Colorado. Her keynote will cover three topics in particular: 1) the rapid pace of change in the American West over the last two centuries; 2) the lessons learned from the historical occasions when Westerners tried to anticipate the future; and 3) the power of the rituals of planning in a society that is much in need of meaningful ceremonies of discussion and deliberation. Ms. Limerick has dedicated her career to bridging the

gap between academics and the general public and to demonstrating the benefits of applying historical perspective to contemporary dilemmas and conflicts.

Wednesday's program (September 12) includes mobile tours visiting the new Riverbend Hospital, Crescent Village mixed use development, EmX Line, Walnut Station development, St. Vincent de Paul housing and retail, and the Wildish Theater. Thursday and Friday programs consist of the more traditional session format, and Saturday, September 15th offers a Planning Commissioner training. For more information please visit opi.lcogsuite.net.

PLANNING
FULL SPECTRUM

SEPTEMBER 12-14, 2007
OPI's Statewide Planning Conference at the University of Oregon

SATURDAY, SEPTEMBER 15, 2007
Planning Commissioner Training



Third Annual Native Caring Conference Highlights Outreach Efforts

S&DS is co-hosting the Third Annual Native Caring Conference, at the Wildhorse Resort Casino in Pendleton on October 10 and 11, as part of its continued outreach to ethnic communities. The conference will provide an opportunity for caregivers of native Elders and grandparents to meet caregivers from other Indian communities throughout the northwest.



D.J. Eagle Bear Vanas

The keynote speaker will be D.J. Eagle Bear Vanas, an internationally acclaimed motivational storyteller, author, and success coach. D.J. is an Odawa Indian. For over thirteen years, Fortune 500

companies, government agencies, and over 400 tribal communities have turned to D. J. to improve results. Conference topics will include: Nutrition Diabetes & Exercise; Depression; Cancer Awareness & Prevention; Grandparents Raising Grandchildren; Brain Health; Care of the Caretaker; Caregiver 101; and Medication Management.

In addition to S&DS, this year's conference is co-hosted by the Cow Creek Band of Umpqua Tribe of Indians; Coquille Indian Tribe; Coos, Lower Umpqua & Siuslaw Indians; Confederated Tribes of Siletz Indians; Confederated Tribes of Warm Springs; the Oregon State Unit on Aging; and the Community Action program of East Central

Oregon. Patti Little, S&DS Contract Manager/Planner, is serving as a member of the Native Caring Conference Planning Committee for the third year in a row.

The registration fee for the conference of \$100 will cover the cost of the conference plus all meals. Individuals are responsible for the cost of their own lodging and transportation. Scholarships are available through the various tribes.

Additional S&DS ethnic outreach efforts include:

Tribal Outreach — A staff member opened her farm in May 2007 to members of the Coquille Indian Tribe for a camas dig. The harvest from this event was used at the annual Coquille Cultural event and served to educate young tribe members of historical tribal traditions.

Latino Family Conference — Staff participated in the Springfield Latino Family Conference for the first time. In preparation for the April 21, 2007 event, the S&DS agency overview board was translated into Spanish. Spanish-speaking S&DS staff also attended the event. This outreach effort was successful and will be continued in the future.

Translation of S&DS Website into Spanish — The S&DS website has been updated with the ability to translate the material into Spanish and other languages (see front page for complete article).

For additional information regarding ethnic outreach please contact Patti Little, S&DS Contract Manager/Planner at (541) 682-4137 or plittle@lcog.org.

From DEMOGRAPHIC page 6

- Based on the 2005 American Community Survey, 16% of the residents of Lane County live in poverty. Of those 65+ years of age, 4.5% are low income. This is a significant decline from 2000 where 7.5% of all seniors in Lane County were at or below the poverty level. However, it is higher than the statewide average of 1.2% for people over 65 years of age.
- In contrast, the majority of S&DS clients, both seniors and people with disabilities, live at or near the poverty level.
- The percentage of minority clients in S&DS' caseload appears to be lower than the county average, when compared with Census data. However, it must be noted that Census data are not age specific, and many of S&DS' clients are over the age of 60.

Creswell Comprehensive Land Use Plan Update



Acknowledged by the Department of Land Conservation and Development in 1982, Creswell's Comprehensive Land Use Plan is the city's official long-range planning document. Recognizing the importance of modernizing its Comprehensive Land Use Plan based on the changing needs and circumstances of the community, Creswell initiated its update to the Plan in early 2007, and will continue through 2008. The update is organized by fifteen applicable statewide planning goals.

Phase 1 work completed over the past year includes:

- New Citizen Involvement Committee - the committee developed citizen involvement policies and an overall citizen involvement plan for the project
- Public workshop - facilitators worked with small groups of participants to propose locations for residential, commercial, industrial, and park land. Follow-up meetings with residential and commercial/industrial busi-

ness owners/developers refined the ideas proposed at the workshop

- Natural Environment Inventory and Report
- Historic Buildings Survey
- Natural Hazards Mitigation Study
- Residential Buildable Lands Inventory
- Public Facilities Plan Summary

Phase 2, now underway, will finalize Phase 1 products and complete other tasks, such as a new comprehensive land use map, new policies and reports addressing energy conservation, recreation needs, transportation, among other items.

For more information, please contact Megan Banks, mbanks@lcog.org or (541) 682-7413, or Denise Walter, dwalters@lcog.org or (541) 682-7413



View of the City of Creswell, looking north.

Steve Gordon's Career Celebrated

by George Kloeppe

Ending his formal employment with LCOG after over 34 years of remarkable service, Steve Gordon and his family had the opportunity on July 12 to visit with over a hundred well wishers, and to watch with trepidation as more than a dozen speakers seized the microphone to praise his professionalism, wisdom and sense of humor. At a celebration held at Mt. Pisgah, friends and colleagues wished Steve and Sue and their family a happy and fulfilling "new chapter" in their life together. Greetings included a personal letter from former U.S. Senator Mark Hatfield and a statement of appreciation from Representative Peter DeFazio.

Steve was first introduced to the Central Lane Planning Council (later LCOG) in 1969 as a student. After "one year, nine months and three days" in the Army—11 months in Vietnam—Steve was back at LCOG as a HUD-sponsored graduate intern. There followed a two-year job in the Public Works Department of Klamath Falls and a return in 1975 to Lane Council of Governments.

Steve's professional imprint was applied to a number of ground-breaking planning enterprises. Included among them were the T-2000 Plan, the first "multi-modal" transportation plan adopted by all of the metro area jurisdictions, the 1990 Plan, the "model" for Oregon's land use planning system, and the MetroPlan, acknowledged by the State LCDC in 1982 after four years and 250 public meetings.

In 1983, Steve, still with LCOG, was appointed the Executive Officer of the Lane County Local Government Boundary Commission, a post that he ably filled for 18 years. Beginning in 1987, Steve turned his professional skills toward the West Eugene wetlands and other natural resource projects. In this arena, Steve applied his talents as a planner and a diplomat to forging partnerships that were unique in the nation. On behalf of local partners, Steve made more than two dozen trips to the nation's capitol. And in recognition of the successful and widely-praised West Eugene Wetlands Plan, speaking engagement requests came in from around the country.

An artist, a teacher, a wood carver, an author, a "planner's planner," and a diplomat, Steve Gordon has served the LCOG organization and the regional community very well indeed. Asked about his long tenure, Steve noted that he stayed "because it was such an exciting place to work on such a wide variety of projects. I was never bored."

Thank you, Steve. All the best.



Karmen Fore, Congressional Staffer, congratulates Steve.



Cathy MacDonald, Director of Conservation Programs, TNC was one of many who spoke of Steve's accomplishments.

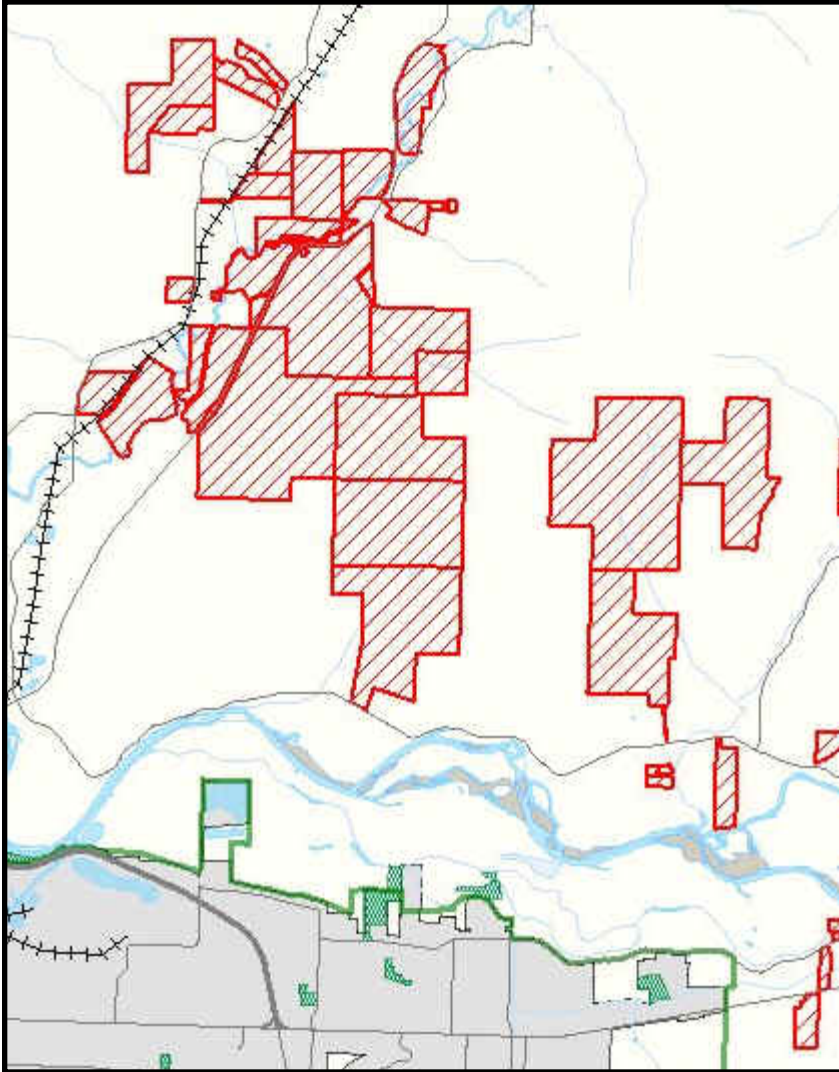


Steve and Sue Gordon enjoy the festivities at Mt. Pisgah's White Oak Pavillion

New Layers and Query Options in Lane Maps

Recent upgrades to Lane Maps, RLID's interactive mapping tool, include new map layers (higher resolution aerial photos, Measure 37 claims, County Commissioner districts, Township, Range & Section grids, and Road Functional Class), and new

"map tips" and query options. For example, a user can now make a geographic selection of properties directly on the map and then filter that selection by dwelling characteristics such as year built or number of bedrooms or bathrooms. More enhancements are coming this fall with another software upgrade and more new data. For more information on the most recent batch of enhancements, see www.rlid.org/RLID_NEWS/Lane_Maps_Jul07.cfm.



New Measure 37 layer in Lane Maps shows the locations of current claims.

New Comp Sales Tool Released

Preliminary testing of the new Comparable Sales tool was completed in the early spring and the application was released to RLID users in late May. Feedback has been overwhelmingly positive, and we have received helpful input from users resulting in minor tweaks and improvements to the interface. The initial version of this application was designed for single-family residential properties only. We are now in the process of developing an additional comp sales tool designed for commercial properties. We anticipate that it will be ready for testing by the end of September. Future plans include the development of additional tools for comps on rural properties and on vacant land. Stay tuned!



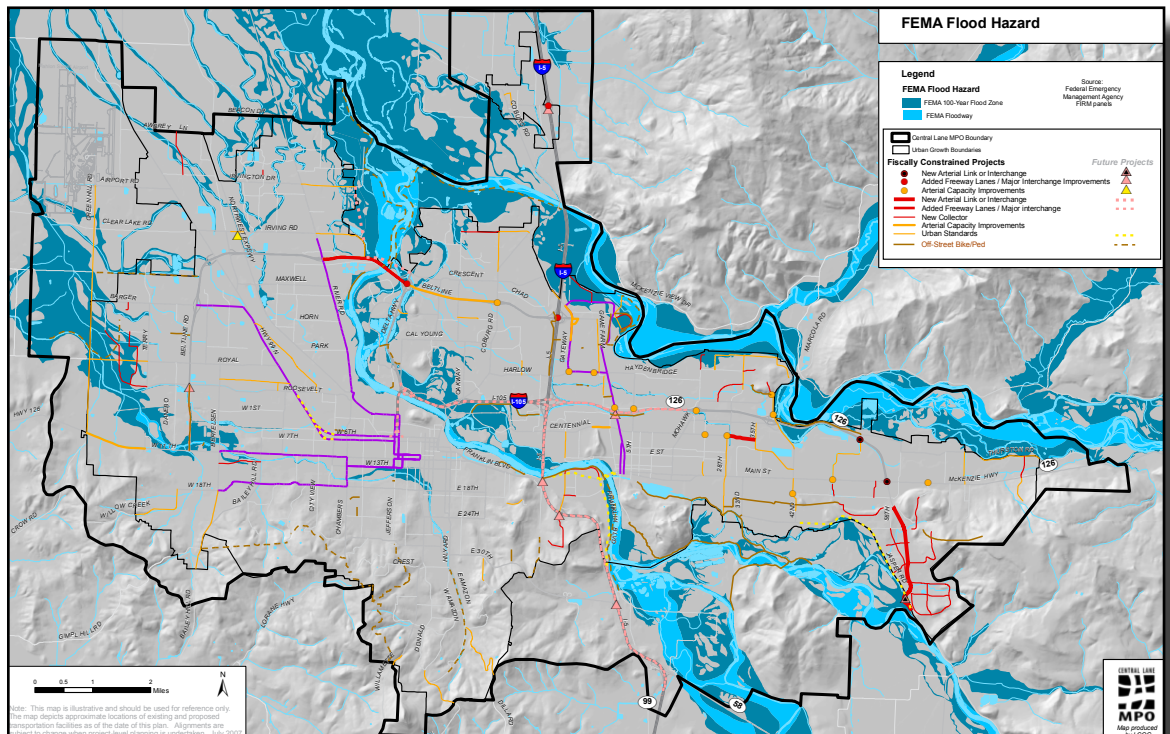
LCOG Promotes Environmental Stewardship in Transportation Plan

On June 19, members of LCOG’s transportation planning staff met with a team of representatives from state and federal transportation and environmental agencies in Oregon, taking part in an effort titled Oregon’s Collaborative Environmental and Transportation Agreement for Streamlining (CETAS). The goal of the group is to identify and implement collaborative opportunities to provide for a safe and efficient transportation system while ensuring sound environmental stewardship.

The maps produced for this consultation superimpose transportation projects from the long range plan (2031 Regional Transportation Plan) of the Central Lane Metropolitan Planning Organization (a federally required body staffed by LCOG transportation planners) on top of environmental, cultural, and social data collected from other sources over the January-July 2007

time period. The intent is to provide a scan that will enable the identification and exploration of potential issues relating to future transportation projects prior to costing, alignment and other decisions that must be made during project development. The alignments and extents of the projects from the 2031 RTP are only approximate at this stage. Refinements would be typically made during project development.

Paul Thompson presented the work done by the LCOG staff Susan Payne and Hilary Dearborn with assistance from Bill Clingman. The team produced a series of 29 maps which can be viewed on the LCOG website at www.lcog.org/mpo/rtp_envirn.html.



The **REGIONAL FOCUS** is published by Lane Council of Governments on a quarterly basis. An electronic version is available in PDF format at www.lcog.org/rfnews.html.

Editors: Colene Doll
 Sarah Finney
 Theron Roe

Design/Layout/Production
 Sarah Finney

Contributing Authors:
 Megan Banks
 Hilary Dearborn
 George Kloepfel
 Sherry Giglia
 Patti Little
 Ann Mortenson
 Susan Payne
 Theron Roe
 Denise Walters

Send comments, requests, or address changes to:
 LCOG Regional Focus
 99 E. Broadway, Suite 400
 Eugene, OR 97401-3111
 (541) 682-4072 or sfinney@lcog.org

LCOG CALENDAR

www.lcog.org/calen.html

The following meetings relate to work tasks conducted by Lane Council of Governments. The meetings are held on a regular basis at the times and locations listed. Meetings that are underlined as a link have meeting materials available online in the [Meetings Section](#). Please note that meeting times and locations are subject to change.

To obtain further information, call LCOG at (541) 682-4283.

August 2007		
<u>1</u>	5:30 p.m.	Transportation Citizens Advisory Committee Eugene Library, Singer Rm.
<u>2</u>	7:00 p.m.	Boundary Commission Eugene Council Chambers
<u>9</u>	11:30 a.m.	Metropolitan Policy Committee Eugene Library, Bascom-Tykeson Rm.
<u>9</u>	5:30 p.m.	LCOG Executive Committee LCOG 4th Floor Small Conf. Room
<u>14</u>	1:30 p.m.	Senior Services Advisory Council Hilary Center
<u>23</u>	9:45 a.m.	Transportation Planning Committee LCOG 4th Floor Large Conf. Room
September 2007		
<u>13</u>	11:30 a.m.	Metropolitan Policy Committee Springfield City Hall, Library Meeting Room
<u>13</u>	5:30 p.m.	LCOG Executive Committee LCOG 4th Floor Small Conf. Room
<u>14</u>	1:30 p.m.	Disabled Services Advisory Council Schaeffers Building, Ed's Room
<u>17</u>	11:30 a.m.	Lana Economic Committee LCOG 4th Floor Large Conf. Room
<u>19</u>	5:30 p.m.	Transportation Citizens Advisory Committee Eugene Library, Singer Rm.
<u>22</u>	10:00 a.m.	LCOG Board Greenwaters Park, Oakridge
<u>27</u>	9:45 a.m.	Transportation Planning Committee LCOG 4th Floor Large Conf. Room
October 2007		
<u>3</u>	5:30 p.m.	Transportation Citizens Advisory Committee Eugene Library, Singer Rm.
<u>4</u>	7:00 p.m.	Boundary Commission Eugene Council Chambers
<u>9</u>	1:30 p.m.	Senior Services Advisory Council Hilary Center
<u>11</u>	11:30 a.m.	Metropolitan Policy Committee Eugene Library, Bascom-Tykeson Rm.
<u>11</u>	5:30 p.m.	LCOG Executive Committee LCOG 4th Floor Small Conf. Room
<u>25</u>	9:45 a.m.	Transportation Planning Committee LCOG 4th Floor Large Conf. Room

Current meeting schedules are available on the LCOG website at www.lcog.org/calen.html