

RLID v2 to be Released Fall 2008

LCOG developers have been working on a major redesign of the Regional Land Information Database (RLID) for the past year, and we are pleased to announce that plans are on track to release RLID v2 sometime this fall. This redesign effort includes a complete rewrite of all the existing code, resulting in improved functionality, system reliability and performance.

Many new features, like more powerful property searches and interactive maps built into reports, make the interface easier – and more fun – to use. Another important feature of RLID v2 is a new “free to the public” section that

allows public users to search for basic information about their own properties (e.g. “Who are my elected officials?” or “Where will my kids attend school?”)

Planned future enhancements include new applications and reports requested by users, custom web services and specialized subscriber content. We think you’ll be pleased with the new RLID!

Please contact Sherry Giglia at 682-4495 or sgiglia@lcog.org if you’d like more information, or to schedule a “sneak preview” of RLID v2 for your office or department.

PLEASE HELP LCOG SAVE PAPER

Let us know if you prefer to receive the **REGIONAL FOCUS** electronically to amortenson@lcog.org

THIS ISSUE

- 2 Director’s Desk
- 3 CAST - Community and Schools Together
Staff Profile - Andrea Riner, Transportation Manager
- 4 LCOG’s GIS Staff Collaborate with ECONorthwest on Eugene Comprehensive Lands Assessment
Staff Profile - Stacy Clauson, Assistant Planner
- 5 2008 High Resolution Color Orthophotography Now Available
- 6 Programs Add Resource Options to Seniors and People with Disabilities
A Quiet RxOlution
Staff Profile - Barbara Jaye, Transition and Diversion Coordinator
- 7 American Community Survey Income and Poverty Data

New RLID home page preview (may be subject to minor changes)



George Kloeppel
LCOG EXECUTIVE DIRECTOR

MEMBER AGENCIES

- CITY OF COBURG
- CITY OF COTTAGE GROVE
- CITY OF CRESWELL
- CITY OF DUNES CITY
- CITY OF EUGENE
- CITY OF FLORENCE
- CITY OF JUNCTION CITY
- CITY OF LOWELL
- CITY OF OAKRIDGE
- CITY OF SPRINGFIELD
- CITY OF VENETA
- CITY OF WESTFIR
- EMERALD PEOPLE'S UTILITY DISTRICT
- EUGENE WATER & ELECTRIC BOARD
- FERN RIDGE LIBRARY DISTRICT
- LANE COMMUNITY COLLEGE
- LANE COUNTY
- LANE EDUCATION SERVICE DISTRICT
- LANE LIBRARY DISTRICT
- LANE TRANSIT DISTRICT
- PORT OF SIUSLAW
- SCHOOL DISTRICT 19
- SCHOOL DISTRICT 4J
- SCHOOL DISTRICT 52
- SCHOOL DISTRICT 68
- SIUSLAW VALLEY FIRE DISTRICT
- WESTERN LANE AMBULANCE DISTRICT
- WILLAMALANE PARK & RECREATION DISTRICT

Director's Desk

Doing the Right Things and Doing Things Right

What does the "average citizen" want and expect from his or her public officials? Perhaps more to the point, what does that average person really believe about government and public service?

Regardless of what might be said at election time about efficiency, transparency and responsiveness, I am often frustrated by the cynicism and low expectations about government that I perceive around me. Research shows that citizen confidence in government is actually at its highest at the local level—that component of the public sector "closest to the people." But even such gold stars are a bit tarnished by perceptions that public institutions are not doing the "right things," nor are they "doing things right." Please note that I said perceptions.

I would contend that at the local level the overwhelming intention of decision makers is absolutely to do the right thing. Elected officials serving cities, counties, schools and special districts derive their personal and civic motivation from the sincere hope of making their communities and agencies better—to genuinely meet and exceed citizen expectations and address the long-term public interest. Sure, opinions will differ as to what the right course of action is, and that is what the democratic, deliberative process is for. But people of good will, possessing the best of intentions, are working hard to do the right thing.

Once the policy decision is made, the question becomes one of doing it right. Here the responsibility typically shifts to the professionals who have committed themselves to public service. It

is not just in the manager's office, but throughout governmental organizations, that judgments must be made every day. Often, the choices are not clear; trade-offs have to be made. Wisdom, experience, good judgment and luck all play a role in achieving good outcomes that serve the public interest. In addition, ethical principles of public service must be constantly applied.

The International City-County Management Association has long played a leadership role in stressing the paramount importance of ethical standards in the conduct of the "public's business." As an example, here are four "Core Principles" from ICMA. Volumes could be, and have been, written to expand upon these concepts. But the short-hand version will convey a sense of the key elements of "doing it right." Ethical professional administrators are expected to:

- Seek no favor
- Build trust through transparency and honesty
- Have a commitment to treating all equitably
- Build great communities through good stewardship

These are neither complicated nor revolutionary expectations. But when practiced, as they are every day, they serve to guide countless decisions, large and small, and help provide the citizen-stockholders with assurance that their investments in local government are sound and that ethical and efficient practices will result in the public's work being done right. All of us, as citizens, should expect no less.



LCOG Participates in Local School and Community-Based Child-Health Research Project

Communities and Schools Together (CAST) for Childhood Obesity Prevention

LCOG participates in local school and community based child-health research project: CAST for Childhood Obesity Prevention

The growing epidemic of childhood obesity is a major public health concern in the United States. The two most important influences on childhood obesity are nutrition and physical activity. While schools are cited as the most capable environment for addressing childhood obesity and related health concerns, they face extreme challenges in providing these social interventions alone. To face these challenges locally, LCOG is working with Oregon Research Institute, the Bethel School District, and many others on a five-year National Institute of Health funded community-based participatory research project investigating the role of physical activity, nutrition, and other factors in a child's environment that contribute to active and healthy youth.

The Communities and Schools Together (CAST) for Childhood Obesity Prevention project is building a collaborative school-community partnership to discover researched solutions to local obesity health

risks for children. The CAST project will track rates of child obesity, analyze environmental and social influences of obesity, and develop strategies for effective and timely community-based obesity prevention and intervention programs. CAST partners will conduct research on social and built environments, food environment influences and factors related to child health. The project also will design, pilot, and evaluate a parent health intervention program, and document research methods and findings for ongoing dissemination and replication of the CAST program. Other project participants include the University of Oregon, Willamette Farm and Food Coalition, Food for Lane County, Lane County Extension Service, Lane Transit District, Lane Coalition for Healthy and Active Youth, and the Lane County Food Policy Council.



Andrea G. Riner
TRANSPORTATION
PROGRAM MANAGER

In her position as Transportation Program Manager, Andrea provides planning leadership and direction for LCOG's Transportation Program and the Central Lane Metropolitan Planning Organization (MPO). As the designated MPO for the Eugene/Springfield area, LCOG is responsible for developing the federally required Regional Transportation Plan, including transportation modeling, and facilitation of federal, state, and local agencies dealing with transportation issues.

Andrea served as the Planning Director for Denver Parks & Recreation where she provided leadership in planning, public involvement, design, and construc-

See **RINER PROFILE** page 5



STAFF PROFILE



Stacy Clauson
ASSISTANT PLANNER

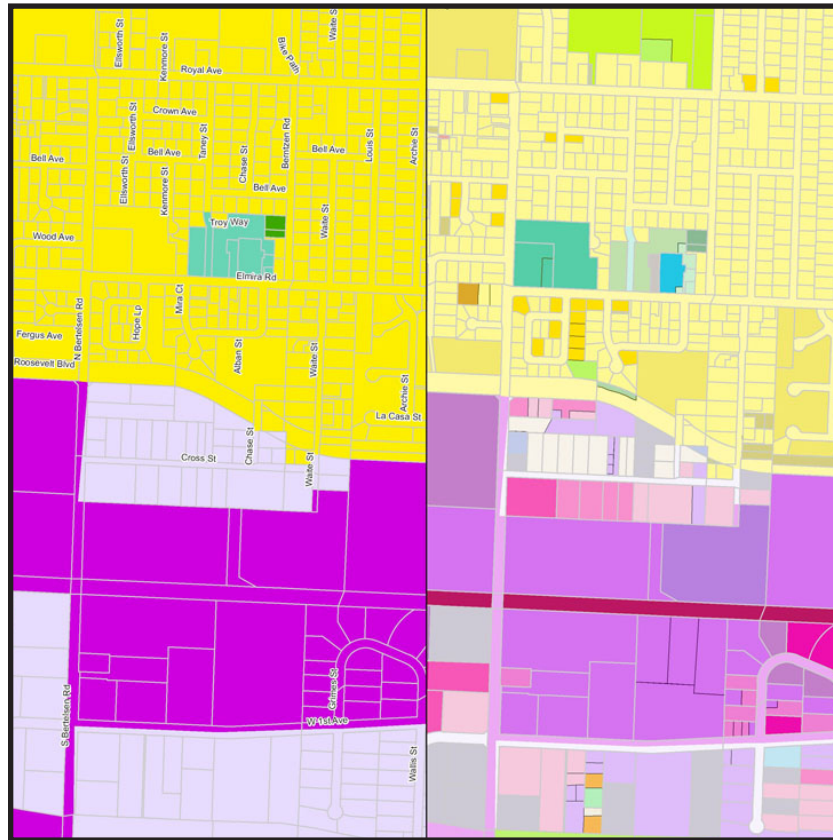
Stacy Clauson joined LCOG in July. She is currently an Assistant Planner with Planning Services. In this role, Stacy will be working on a diverse set of projects, from current planning to transportation. Stacy received her B.S.S. in Environmental Policy and Assessment from Western Washington University in 1996. She has worked for the Planning Departments in Island County and Kirkland in Washington. Stacy has also earned a Certificate in Site Planning from the University of Washington. Most recently, Stacy managed the update to the City of Kirkland Shoreline Master Program, addressing planning and environmental issues along

See **CLAUSON PROFILE** page 5

LCOG's GIS Staff Collaborates with ECONorthwest on Eugene Comprehensive Lands Assessment

In 2007 the Oregon Legislature passed House Bill 3337, which requires the cities of Eugene and Springfield to establish separate Urban Growth Boundaries by dividing the metropolitan

December 31, 2009. In May of 2008, Eugene selected a proposal by ECONorthwest and LCOG to provide technical support for the Eugene Comprehensive Lands Assessment (ECLA) project.



Local data provide a foundation for the Eugene Comprehensive Land Assessment.

planning boundary that they have shared for more than 25 years. Part of this action requires the cities to complete a study of the sufficiency of residential buildable land within their respective Urban Growth Boundaries (UGBs) by

As part of this effort, LCOG's Applied GIS team is currently building a GIS based model which will combine various regional GIS data layers describing current land uses and constraints to development in order to produce an inventory of buildable lands within the city's UGB. This model will serve as a flexible tool for the city's planning department to compare forecasted

land demand with existing capacity, helping to answer questions about the city's capacity to accommodate forecasted future growth. The project began in June 2008 and is expected to be completed by December 2009.



2008 High Resolution Color Orthophotography Now Available

New color digital orthos have arrived. The spring issue of Regional Focus announced the collaboration of local agencies to acquire ortho imagery that updates the previous 2004 flight. The region took advantage of two out of a total of only three clear spring days suitable for aerial imagery acquisition! Broad regional participation in the 2008 flights resulted in geographic coverage well beyond the metro area to encompass the surrounding cities.

The new imagery is timely. An early delivery covering UO's Hayward Field and surrounding areas of Eugene played a key role in security planning and operations for the early summer Olympic Track and Field Trials event. Coverage of the Eugene-Springfield metro area is proving critical for regional land use inventory updates in support of buildable land assessments under-

way in both cities. The Emerald People's Utility District (EPUD) plans extensive use of the orthos to update service area maps. The City of Cottage Grove took advantage of the regional effort and acquired color orthos and large format prints of the city and surroundings.

Deep winter snow cover and cloudy spring weather conditions delayed flights up the McKenzie River and across portions of western Lane County where additional high (6-inch) and medium (one-foot) resolution aerial imagery were flown in late June and July. Orthos from these flights are eagerly anticipated by EWEB and Lane County, in particular, for support of mapping, environmental monitoring, and a variety of other projects. The next regional ortho acquisition project is anticipated in 2010.



New Orthophotography was used for Olympic Trial Public Safety efforts.

From CLAUSON PROFILE page 4

the city's waterfront, as well as participated in the city's natural resource planning efforts, including protection of wetlands, streams, and other sensitive areas. Stacy also worked on sustainability issues. She worked to establish a Green Building Program and to integrate Low Impact Development practices into the City of Kirkland's development regulations. Stacy can be reached at (541) 682-3177 or sclauson@lcog.org.

From RINER PROFILE page 3

tion for the city's 30,000 acre park system. Previously, she served as the Parks and Open Space Planning Manager for the City of Eugene, developing the agency's first Parks, Recreation and Open Space Master Plan. Andrea is a graduate of the University of Wisconsin—Madison and is a registered Landscape Architect in the State of Oregon. Andrea can be reached at (541) 682-6512 or ariner@lcog.org.





Barbara Jaye

TRANSITION AND
DIVERSION COORDINATOR

In September 1989, Barbara was hired as an Senior & Disabled Services intern. She was hired as a full time Case Manager in 1990, after graduating from the University of Oregon with a B.A. in Human Services. Her duties included Case Manager work for both the Senior Community-Based Care Unit and the Senior Intake Unit. She also served as the designated Ross Grant Case Manager in 2005 working with Housing Authority and Community Services Agency residents.

As of July 1, 2008, Barbara moved to a new position as Transition Coordinator with On the Move in Oregon. This project is a "Money Follows the

See JAYE PROFILE page 7

Programs Add Resource Options to Seniors and People with Disabilities

The State of Oregon recently introduced two programs that add resource options to seniors and people with disabilities. They are:

- **Oregon Diversion & Transition** - State sponsored, managed by local Field Offices
- **On The Move in Oregon** - A Federal Grant, managed by the State

Diversion & Transition will help people avoid premature or inappropriate placements into nursing facilities. By providing a means for needed supports, people may have more options to live in their own homes, assisted living, adult foster homes, or residential care.

On the Move in Oregon helps people who have been in nursing facilities for six months or longer who are ready to live in a different, less structured setting (such as their own homes, assisted living, adult foster homes, and residential care).

The programs work hand-in-hand, using creative means to provide the assistance/resources that will ensure a smooth transition, and offer some

ongoing supports for continued living at a less intense level of care.

Currently there is one Transition Coordinator for each program covering Lane County. Both individuals have extensive background in case management. Barbara Jaye began as the Diversion & Transition (D/T) Coordinator July 1st, and Sharon Hebert will be moving from Tigard to serve as the On The Move (OTM) Coordinator beginning October 1st.

In the short amount of time Barbara has been in her new position, she has already had some successes, plus she's referred consumers to the OTM program. We are confident that there will soon be many more success stories.

What the D/T and OTM means to us is that people will have more choices to live as independently as feasible. The added benefit is the less intense care will cost less, which we are hoping will free some funds to help us help more people. This is particularly important because the numbers of seniors is and will continue to grow in our State.

A Quiet RxOolution

As of the end of July 2008, over 11,600 people have enrolled in the Oregon Prescription Drug Program in Lane County. Senior Connections has consistently led the state-wide effort, with higher enrollments than any other county since the inception of our grant. We have achieved a 20 percent increase in enrollment for those un- or underinsured across our county.

We were lauded for our efforts by Senator Bill Morrisette, and he made a visit to meet with the Senior Connections staff earlier this year.

Last December, Senior Connections received a small grant from the AARP to help "get the word out" about the Oregon Prescription Drug Program. From our offices and centers in Eugene,

See OPDP page 7



American Community Survey Income and Poverty Data Released for 2007

The Census Bureau has begun releasing 2007 data collected as part of the American Community Survey (ACS), an ongoing survey that produces important statistics about the U.S. population, economy, housing, and demographics. Initial data released includes information on income, earnings and poverty for areas with populations of 65,000 or more. Later this fall social, economic, housing, and demographic data for areas with populations of 65,000 or

more will be released. By December, the Census Bureau will release the same data for areas with populations of 20,000 or more. This data release will mark the first time that three-year estimates are released for areas with populations of 20,000 and greater.

A summary derived from the 2007 ACS is shown on page 8. It shows that both Lane

See **AMERICAN COMMUNITY** page 8

From OPDP page 6

Springfield, Florence, Cottage Grove, Junction City, Oakridge, Creswell and Veneta, plus the Family Caregiver Program, we've made a broad-based community effort.

All of the Area Coordinators folded information about the free discount program into their day-to-day work with Senior Connections. In addition, we took the information to any and all venues where people gather. From public presentations, community bulletin boards and laundromats, cafés and farm settings, newsletters for the Saturday Market and various church groups, and word of mouth, information about this valuable benefit for all Oregonians has been spreading.

In some cases, people no longer have to choose between food and medicines. Many of those we serve are low-income individuals, so the benefit of the free OPDP card is far-reaching. Enrollees are often able to stretch their funds to include all the medications they need, while being able to afford groceries and other essentials of daily life.

Senior Connections is dedicated to helping seniors stay in their own homes and to remain independent for as long as possible. We offer help to elders age 60 and over, as well as their family caregivers, for respite, medical and social transportation, arranging meal deliveries, prescription assistance, wellness checks, winter energy assistance, and companionship. With a commitment to community connections, we work with volunteers from our own Elder Help program, as well as Senior Companions and United Way's



Senator Bill Morrisette met with Senior Connections staff to commend them on the success of the outreach work for the Oregon Prescription Drug Program.

From JAYE PROFILE page 6

Person" project funded by the federal Centers for Medicare and Medicaid Services. The On the Move in Oregon project demonstrates that long-term institutionalized populations of people with complex medical and long-term care needs can be served in their communities with wrap-around packages of supports and services. Project funding will be available to Oregon from the second quarter 2008 through September 2011.

As the Transition Coordinator, Barbara's focus is to prevent inappropriate or premature long-term nursing facility residency of Medic-

The **REGIONAL FOCUS** is published by Lane Council of Governments on a quarterly basis. An electronic version is available in PDF format at www.lcog.org/rfnews.html.

Editors: Colene Doll
Sarah Finney
Theron Roe

Design/Layout
Sarah Finney

Contributing Authors:
Eric Brandt
Bob DenOuden
Sherry Giglia
Paula Gourley
George Kloepfel
David Richey
Nancy Sargent-Johnson

Send comments, requests, or address changes to: LCOG Regional Focus, 99 E. Broadway, Suite 400, Eugene, OR 97401-3111, or Sarah Finney at (541) 682-4072 or sfinney@lcog.org.

From AMERICAN COMMUNITY page 7

County and the Eugene-Springfield metro area's median household income have increased over the past year, but remain significantly lower than that of the state of Oregon as a whole.

MEDIAN HOUSEHOLD INCOME (not inflation adjusted)

	2006	2007	Change
Oregon	\$46,230	\$48,730	5.41%
Lane County	\$42,127	\$43,111	2.34%
Eugene-Springfield Metro Area	\$40,592	\$41,706	2.74%

POVERTY RATE

	2006	2007	Change
Oregon	13.3%	12.9%	-0.4%
Lane County	15.9%	14.3%	-1.6%
Eugene-Springfield Metro Area	17.9%	16.3%	-1.6%

Poverty rates for Lane County and Eugene-Springfield are higher than the state's but dropped by a larger amount than the statewide rate between 2006 and 2007.