

REGIONAL FOCUS

'Project Homeless Connect' A Success

On February 8th, 250 volunteers connected 1,007 homeless and vulnerable people with social, legal, and medical services at the Lane County Events Center. Lane County's first Project Homeless Connect was a collaboration of County, City, non-profits, for profits, and community partners who came together to connect local homeless individuals with services that had not been reached out to before.

Senior & Disabled Services provided four staff during the day long event to provide information and referral services for food stamps, medical, and Adult Protective Services. These representatives of Senior & Disabled Services spoke with over 90 individuals.

"This was an unbelievable experience," stated Becky Strickland, Program Supervisor for Senior & Disabled Services. "To witness this great caring community embrace our homeless and vulnerable citizens was a powerful experience. To think that most house-

holds are only 2-3 paychecks away from homelessness...this could be me and my family."

Project Homeless Connect is a nationwide movement to increase access to services for homeless people and to engage local communities in finding a solution to homelessness. On any given night in Lane County over 1,200 people are homeless or living in temporary shelters. Nearly 6,000 individuals were homeless and received services from the local continuum of care last year.

See **HOMELESS CONNECT** on page 3



"Local agencies coming together this very special day to show their love and respect for these individuals ...will make a difference for many days to come."

THIS ISSUE

- 2 Director's Desk
- 3 Open House Invitation
- 4 Kelly, Spindle, Gaydos and Others Honored at Annual Dinner
- 5 Metro Waterways Study Enhancement Alternatives Developed
- 6 60 Ways to Leave Our Groundwater—Cleaner
- 7 LCOG, EWEB, and DHI Build Advanced Hydrologic Models
- 8 FY 05/06 HRA Review Staff Profile
- 9 Land Use Data Redesign Underway Staff Profile
- 10 New RLID Features on the Way Staff Profile
- 11 2007 Oregon Planning Institute Date Set
- 12 Calendar

**PLEASE HELP
LCOG SAVE PAPER**
Let us know if you prefer to receive the **REGIONAL FOCUS** electronically.

DIRECTOR'S DESK



George Kloeppel
LCOG EXECUTIVE DIRECTOR

MEMBER GOVERNMENTS

- Lane County
- City of Eugene
- City of Springfield
- City of Cottage Grove
- City of Florence
- City of Junction City
- City of Oakridge
- City of Veneta
- City of Creswell
- City of Dunes City
- City of Lowell
- City of Coburg
- City of Westfir
- School District 4J
- School District 19
- School District 52
- School District 68
- Lane Community College
- Eugene Water & Electric Board
- Emerald People's Utility District
- Port of Siuslaw
- Lane Education Service District
- Western Lane Ambulance District
- Willamalane Park & Recreation District
- Fern Ridge Library District
- Lane Library District
- Siuslaw Public Library District
- Lane Transit District

Spring Forward

It is wonderful that each season of the year brings with it special qualities. In our personal lives many of us find a sense of peace and security in the regular return of family traditions and seasonal activities. It is spring! Basketball is giving way to baseball and we see the days in the Willamette Valley lengthen, warm and dry. New growth is appearing, right on schedule. There is a similar cycle at play in the ongoing work of public jurisdictions. New office holders are settling in and local budget committees are beginning their work. In all of this, we are reminded that there is a natural order to things.

This issue of the Regional Focus offers congratulations to honorees and shares some of the fun of LCOG's Annual Appreciation Dinner in January. I have attended 26 of these events over the years and can honestly say that each is unique—new attendees, new locations, and different people honored for their amazing contributions to the well-being of the region. But there is also a comforting familiarity to this annual milestone at which the agency offers its gratitude for the successes that have been achieved. For me, it is always an enjoyable seasonal moment.

At LCOG, each spring brings change and opportunity. This year, new officers have been elected to lead the organization, and Board Chair Patrick Lanning from EWEB and Vice Chair Greg James from Willamalane Park and Recreation District are off to a great start. Other members of the Executive Committee for 2007 include Cottage Grove Mayor Gary Williams, Florence Mayor Phil Brubaker, Coburg Mayor Judy Volta, Oakridge Mayor Don Hampton, Bethel School District

Director Alan Laisure and LCC Director Susie Johnston. The LCOG Board of Directors has also welcomed new members for 2007, and we on the staff look forward to working with and for all of the policy officials of this organization.

This is also budget season for state and local governments. LCOG's six-member Budget Committee is expected to recommend a Revised FY 2006-07 Budget to the Board in April and a proposed FY 2007-08 Work Program and Budget in June. Unquestionably, some of our member governments will have a more challenging budget season than others. Lane County in particular is struggling with significant fiscal issues, and the dilemma faced by the County has spin-off effects in the cities of our region as well. Aligning limited available resources with seemingly unlimited demands or expectations for services is a daunting, but not unfamiliar, task for budget makers. It is a part of LCOG's role and purpose to be a part of the solution to such budgetary dilemmas.

As the weeks roll on toward the beginning of a new fiscal year, I offer a smile and a tip-of-the-hat to spring. We've been here before. We have met the challenges and we have seized the opportunities. Such is my expectation for this year as well.



YOU ARE INVITED TO AN OPEN HOUSE!

LCOG's staff cordially invites the "extended COG family" to an Open House at the agency's main office in the Wells Fargo Bank Building, 99 East Broadway in Eugene, on Thursday, June 7, from 4:00 to 6:00 p.m. The 3rd and 4th floors will be open to welcome guests with music, tours, hors d'oeuvres and beverages.

This event is intended to say "thank you" to policy makers, state and local staff, and other public and private sector stakeholders for all they do to make this a wonderful region. The Open House will also provide opportunities for informal conversations with LCOG staff members about programs and services of the agency. Please join us on June 7th.



HOMELESS CONNECT (Continued from page 1)

People who are homeless struggle daily with the repercussions of unmet basic human needs for safety, stability, and shelter. By convening a one day, "one-stop shop" event, Project Homeless Connect for Lane County offered assistance with housing, health care, legal issues, benefits enrollment, treatment, and other basic needs to people who are homeless. In addition to hooking people up to needed services, breakfast, lunch, snacks and beverages were provided. Medical and dental care, hair cuts,

massages, child care, bicycle repair and pet care were among other services offered throughout the day.

The project organizers are anticipating this to be an annual event. "The success of Project Homeless Connect is a reflection of this great community," said Strickland. "Local agencies coming together on this very special day to show their love and respect for these individuals with the hope the services provided will make a difference for many days to come."

Kelly, Spindle, Gaydos and Others Honored at Annual Dinner



Lane Council of Governments presented former two-term Eugene City Councilor David Kelly with the Outstanding Elected Official award at LCOG's

2006 Appreciation Dinner, held on January 25 at the Village Green Resort in Cottage Grove. More than 100 elected and appointed officials and active citizens attended the dinner, marking

LCOG's 61st year of service. Also honored were Mary Spilde, President of Lane Community College, LTD Board President Gerry Gaydos, and GloryBee Foods, Inc.

Councilor Kelly's award was presented by Eugene Councilor Andrea Ortiz, who praised Kelly's service as an able representative of the citizens of his ward and of all of Eugene. Kelly was cited for his work ethic and attention to detail. His intergovernmental service included the Region 2050 Policy Committee, Joint University of Oregon-City of Eugene Task Force on the West University Neighborhood, the Metropolitan Policy Committee, and the Housing Policy Board.

In presenting LCC President Mary Spilde with LCOG's Outstanding Public Employee Award, Jan Gund, noted Spilde's years of leadership and dedication to education. She was praised for her commitment, talent, and compassion. It was noted that in addition to her demanding professional assignment, Dr. Spilde has applied her energies to community activities and programs, including the League of Women Voters, United Way of Lane County, the Lane Metro Partnership, as well as state and national organizations supportive of workforce development.

Gerry Gaydos, President of the Lane Transit District Board, was given LCOG's 2006 Civic Achievement Award by LCC Board member Susie Johnston. Gaydos was praised for his many contributions to the well being of the region, which have included leadership roles with the Oregon Bar Association, the City Club of Eugene, the Eugene Planning Commission, the Eugene Family YMCA, Birth to Three, and Eugene Southtowne Rotary Club

Also a recipient of recognition at this year's dinner was GloryBee Foods, Inc. which received the Regional Award of Merit for Economic Enhancement from Jack Roberts, Executive Director of Lane Metro Partnership. The award recognized GloryBee's contributions to the community and for being "an example of a successful, environmentally sensitive business."

The Springfield Renaissance Development Corporation was honored as the year's Outstanding Intergovernmental Team. The "SRDC" was praised for completing the 284-seat Wildish Theater in downtown Springfield. Led by Tom Draggoo, the SRDC bought the McKenzie Theater building in 2000 and raised over \$2 million to rebuild the facility into a community treasure. Draggoo, along with fellow SRDC members Dan Egan, Tammy Fitch Mark Pangborn and Cynthia Pappas, were praised by Willamalane Park District board member Greg James for their perseverance and get-it-done attitude.

LCOG's Appreciation Dinner, presided over by Patrick Lanning, EWEB Board member and LCOG Chair, also included the presentation of the agency's 2006 LCOG Annual Report.

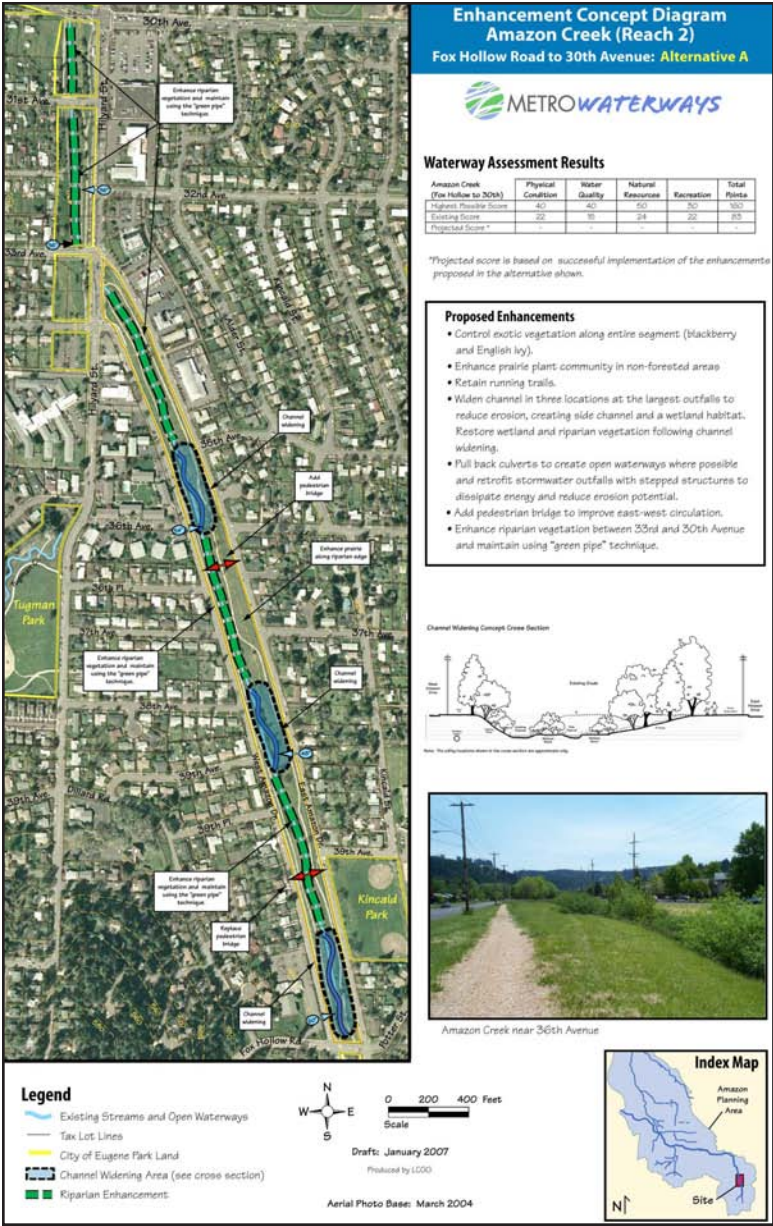
Metro Waterways Study Enhancement Alternatives Developed

The U.S. Army Corps of Engineers (Corps), Lane County, the Eugene Water & Electric Board, and the cities of Eugene and Springfield are partnering on a multi-year study of the function and health of waterways in the greater metropolitan area. The study's primary objectives are to provide a better understanding of existing problems associated with area waterways and to subsequently identify potential enhancements to improve those conditions. Two locations have been selected for immediate study: Amazon Creek in the Eugene area and Cedar Creek/McKenzie River in the Springfield area.

Since the projects initiation in 2003, LCOG has been helping coordinate this effort locally for the Corps and has provided a wide array of technical assistance. This includes taking the lead on meeting facilitation, mapping, citizen involvement, and development of potential enhancement alternatives. In June 2006, LCOG facilitated two day-long design charrettes involving more than 30 partner staff. Since that time, LCOG has taken the results of these design charrettes and translated them into a number of enhancement alternatives, working

closely with partner staff. These enhancements are now being evaluated in terms of cost and multi-objective benefit. Once this evaluation is completed an Environmental Assessment will be conducted by the Corps, opening the door to on-the-ground projects.

For more information on this effort please go to www.metrowaterways.org or contact Jeff Krueger at 682-4122, jkrueger@lco.org.



60 Ways to Leave Our Groundwater—Cleaner

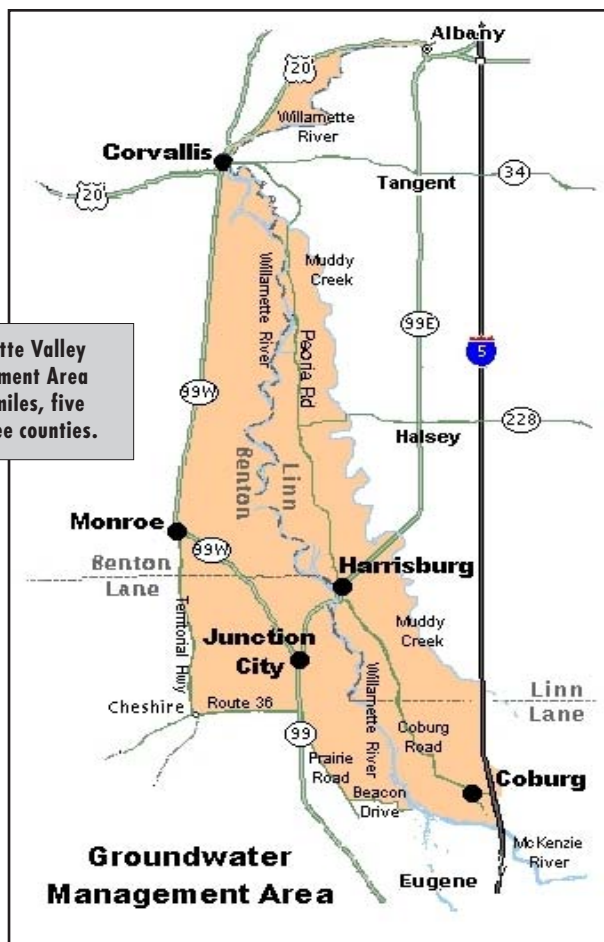
The future is looking brighter for domestic well and public water supply users in a large portion of the Southern Willamette Valley. The state-appointed and LCOG-facilitated Groundwater Management Area (GWMA) Committee just wrapped up two years of work by finalizing an Action Plan to address groundwater quality issues in the region. The Plan was developed through a multi-jurisdictional, cooperative approach among many agencies and organizations.

Much of the groundwater in the area, especially along the valley floor between Eugene and Albany, contains some level of nitrate - an odorless and colorless contaminant. Initial monitoring in the valley showed that nitrate contamination reached as high as three times the public drinking water standard of 10 milligrams per liter (mg/L.). This area is one of the fastest growing parts of the state and it is likely that future demand for using groundwater as a drinking water source will only increase.

The Action Plan contains 60 voluntary strategies to address nitrate contamination and to prevent other potential contaminants from reaching the drinking water supply. The GWMA is 230 square miles, encompasses five cities including Junction City and Coburg, and is within portions of Lane, Linn, and Benton counties. Multiple land uses such as urban, rural residential, agriculture, and industry are spread throughout the region.

LCOG and the GWMA partners (Department of Environmental Quality (DEQ), Department of Agriculture, Department of Human Services, and OSU Extension) sponsored public events throughout the region. They also met with public officials in the area to inform them of the plan details and to ask for their comments. The GWMA Committee finalized the Action Plan and it was officially approved by the DEQ in December.

The process was extremely successful in many ways. In a place and at a time where regulatory agency staff are often looked upon with a wary eye, it was refreshing to have the lead DEQ staff person affectionately referred to as the "GWMA Mama".



The Southern Willamette Valley Groundwater Management Area contains 230 square miles, five cities, and parts of three counties.



LCOG, EWEB, and DHI Build Advanced Hydrologic Models

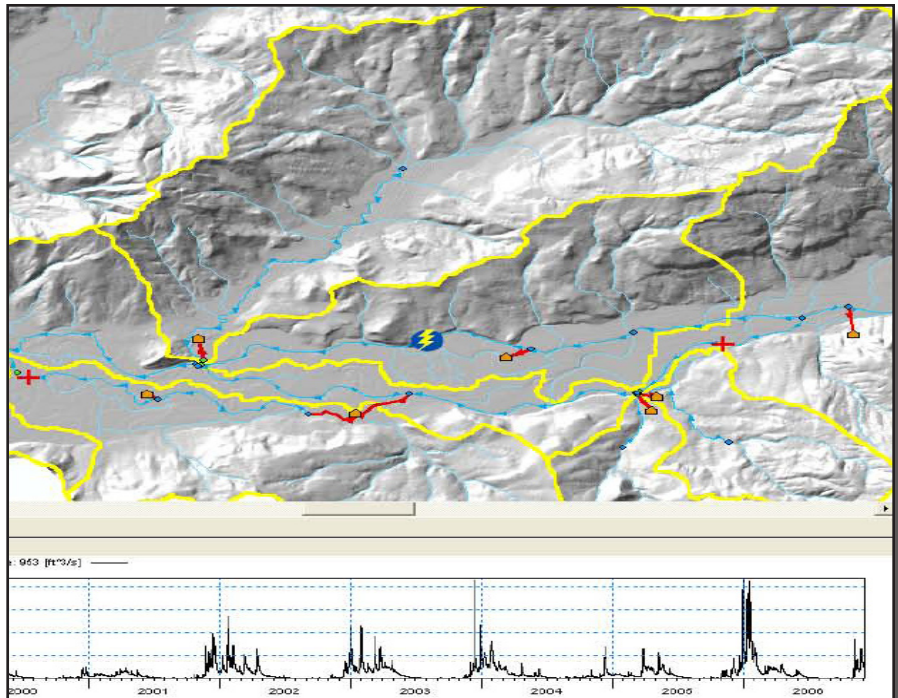
In 2000, Eugene Water and Electric Board (EWEB) completed a plan to protect the McKenzie River as the sole source of drinking water for the community of Eugene. This plan details an approach to address the various potential threats to water quality and long-term viability of the McKenzie River as a drinking water source for EWEB's customers. The overall concept of source protection is to have the ability to measure the balance between watershed health and human use over time and implement actions that maintain a healthy balance to produce exceptional water quality.

In order to meet those needs, EWEB's Source Protection Program teamed with Lane Council of Government's Applied GIS group as well as DHI Water & Environment to implement a watershed scale hydrologic model using DHI's MIKE BASIN water resources modeling software. Subsequent modeling will be completed using DHI's MIKE 11 river and channel hydraulics modeling software coupled with water quality analysis extensions for both modeling packages.

Since DHI's models are tightly integrated with GIS, and because LCOG has been hosting EWEB source water quality monitoring data and providing services to EWEB's drinking water protection program since 2002, LCOG was an excellent candidate to help implement these models. When completed, the MIKE BASIN and MIKE 11 models will be used to refine EWEB's water quality monitoring program, assess potential affects of point and non point sources of pollution on drinking water quality, examine water quantity issues, particularly in light of potential

long term global climate change impacts in the McKenzie watershed, and analyze responses to emergency scenarios that could threaten Eugene's drinking water source.

The MIKE BASIN model will be completed this spring and work on the MIKE 11 modeling will begin in the summer. Current efforts are focused on calibrating a rainfall-runoff model, implementing specific water user information into the model, and gathering additional data needed to complete the MIKE BASIN model. By working closely with DHI, both EWEB and LCOG are gaining valuable hydrologic modeling capabilities, which will make it possible to modify and extend the models to suit other needs.



DHI hydrologic modeling software coupled with LCOG GIS data is being used to protect drinking water in the McKenzie River watershed.

STAFF PROFILE



Nick Seigal

GIS ANALYST/
APPLICATIONS DEVELOPER

Nick Seigal started at LCOG in December 2006. He specializes in the development of GIS and web-based applications and data analysis.

Currently, Nick is redesigning the land use data collection and maintenance system at LCOG. He is assisting in the development of applications for EWEB's McKenzie River Water Quality project and has helped to upgrade the interfaces at the Lane Maps and RLID sites.

After plenty of experience outside of Lane County, he notes that "LCOG is one of the best places for GIS in the region and probably the top two or three in the state." Nick can be reached at (541) 682-6733 or nseigal@lco.org.

FY05/06 HRA REVIEW

Success for Employees and Employer

LCOG has now had a Health Reimbursement Arrangement (HRA) health insurance plan for two complete years. The plan was very successful for the employees and the agency the first year. This success continued in the second year with increased savings and plan enhancements.

The HRA plan is a high-deductible plan with an employer-funded account, to help members pay for claims before they reach their deductible and maximum out-of-pocket amounts. The prior plan had a maximum out-of-pocket expense of \$1,000 per member, with a \$2,000 maximum per family. Employees were required to pay from 6% to over 12% of the monthly insurance costs to cover themselves and eligible dependents. The HRA plan has a \$2,500 deductible (the amount the member must spend before insurance pays for services) and a \$3,000 out-of-pocket maximum. For families, the deductible is \$4,000 with a \$5,000 maximum out-of-pocket, although each family member is treated as an individual, i.e. only has to meet the \$2500 deductible, etc. Under LCOG's HRA plan, employees have no monthly premium contributions, as the agency pays the full cost of the premiums.

A critical component of the HRA plan is the employer-funded account established for each employee. In FY05/06, LCOG contributed \$1,800 pretax into each employee's account. In FY06/07, LCOG will contribute \$1,500 into each employee's account. Balances accrued in

an employee's employer-funded account can be rolled over from year to year and accumulate for future medical needs. This provides a major incentive to spend health care dollars wisely, with an eye towards cost containment, as is appropriate.

The usage costs for the plan in FY05/06 were low enough that the premium increase for FY06/07 was only 1.5%. Employees continued to save more money due to the small increase. Additionally, employee account balances equal \$115,000 (after two years), 38% of employees have more than \$1,500 in their accounts, and 64% have more than \$500.

These are dollars that belong to employees for their future health care costs, rather than dollars spent for their portion of health insurance premiums. Even employees with small account balances have benefited, as they have paid less than they would have were they still in a traditional plan and had to contribute monthly premiums for themselves and any covered dependents.

The HRA plan was improved for FY06/07 with enhanced coverage for preventive services and vision care. These improvements were added as part of a general wellness theme to provide incentives for employees to utilize preventive services without any financial obstacles.

The HRA plan should continue to provide savings on health insurance for both LCOG and its employees in the future.

Land Use Data Redesign Underway

Understanding patterns and characteristics of human land use across the landscape is useful for many kinds of analysis including buildable land inventories, facility siting, current and long range planning, storm water management, transportation demand modeling, and utility studies (e.g. water, energy, sewer, etc.), to name just a few.

LCOG and its regional partners have been collecting land use data for more than three decades and storing it in a succession of GIS formats. The data have largely been gleaned from building permits and supplemented where possible through research of other sources like phone directories, Assessor records, aerial photography, and calls to property owners. The land use information has been codified and attached as an adjunct to both site address and parcel records in the regional GIS.

Growing regional interest in land use data and new processes that support maintenance of digital tax lot information by Lane County are enabling the region to redirect scarce GIS resources

from redundant parcel maintenance to land use data. In fact, work is already underway to look more broadly at regional requirements for land use data and to redesign the data structure and data maintenance processes.

Key objectives of the redesign effort include:

- dedicated data gathering and maintenance resources;
- updated standards-based data classification scheme;
- refined and better integrated data model,
- new tools and procedures for data gathering, maintenance, and quality control; and
- active regional participation in the coordination of land use data efforts.

A regional land use data committee has recently been formed and initial meetings have been set to help chart the course for land use data redesign efforts that are anticipated to continue through the summer. In the meantime, parallel work to improve the interim land use data file is in progress and will continue until the new land use database is ready for unveiling in late 2007 or early 2008. For more information, please contact Nick Seigal at nseigal@lcog.org or at (541) 682-6733.



Ellen Kozyra
GIS ANALYST

Ellen Kozyra started at LCOG as a GIS Intern through the U.S. Department of Housing and Urban Development Fellowship Program in June 2006. In January 2007, she was officially hired as a GIS Assistant.

Ellen is involved in a number of different projects including data sales and custom mapping for a variety of clients. Most recently, Ellen performed a detailed, GIS-based land use study along the Franklin Boulevard 'EmX' corridor for Lane Transit District.

Ellen appreciates the positive atmosphere at LCOG. She notes, "There is an excitement about the projects and that makes it a great place to work." You can contact Ellen at (541) 682-6423 or ekozyra@lcog.org.



STAFF PROFILE



Jeff Cook

SENIOR APPLICATIONS DEVELOPER

Jeff Cook brings a very diverse set of skills and a positive attitude to the LCOG team. "I like being in a support role and helping our member agencies provide valuable public services," Jeff said emphatically.

He is currently helping launch the e-MPO application which will play a crucial role in engaging the public, supporting staff, and informing decision-makers. He is also working with the City of Roseburg to inventory community assets.

Jeff has held a variety of positions including PC support staff, network analyst, IT management, and database manager at the University of Oregon. Jeff can be reached at (541) 682-4391 or jcook@lco.org.

New RLID Features on the Way

Redesign Project in Progress

The RLID development team has begun a major redesign project, expected to be complete by the second half of FY2008. RLID was originally developed in 1999, and aside from periodic enhancements and upgrades to various applications, the original site organization and code have largely remained unchanged over the past 8 years. We recognize the need to update the service and are moving forward with plans to design a more integrated, efficient, and "user-friendly" system. User input is welcome and encouraged!

Comparable Sales Tool

Commercial RLID users have long expressed a need for an efficient comp sales tool. We are pleased to announce that we have succeeded in developing just such a tool. The RLID Comparable Sales Tool is currently in the final beta testing stages and will be available to all RLID users this spring. There will be an initial 60 to 90 day free trial period after which this new tool will become a premium service for commercial subscribers.

Street Name Search

The Street Name Search tool was developed primarily to assist addressing jurisdictions with review of proposed street names. It offers an important tool to reduce instances of redundant or sound-alike street names that needlessly raise risk of error in commercial deliveries and emergency response situations. Because of the importance of coordinated street naming, we are making the Street Name Search applica-



RLID services are expanding in response to customer input.

tion available to developers and others who are involved in naming new streets but who may not subscribe to the full RLID service. A link is being added to the RLID home page allowing free access to the application (Note that the existing link to the Street Name Search will also remain in the subscriber-accessed application menu). For more information on street/road naming guidelines, see http://www.rlid.org/app_frame.cfm. To access the Street Name Search tool, go to the RLID home page (www.rlid.org) and click on "Street Name Search" from the left sidebar menu.

Lane Maps Enhancements

In the last issue of Regional Focus, we announced the release of a new version of Lane Maps, RLID's interactive mapping and spatial analysis tool, as well as plans for future enhancements. Since then, we have replaced older, outdated streets layers with the current road centerline layer which is updated bi-weekly. We also made some cosmetic improvements to street labeling.



2007 Oregon Planning Institute Date Set

The dates have been set for the 2007 Oregon Planning Institute (OPI)! OPI will again be held at the Lillis Business Center at the University of Oregon, Wednesday, September 12th through Friday, September 14th with a Planning Commissioner training offered Saturday morning, September 15th.

The theme, "Planning Full Spectrum", addresses the breadth and depth of planning, encouraging a broad range of perspectives, engaging any and all disciplines offering insight to issues, and considering different scales of time and planning areas.

The first day, Wednesday, September 12th, will consist of longer sessions such as trainings in land use basics, public involvement, and GIS. Mobile workshops return to the program and will include sites such as the new hospital

in Springfield at RiverBend and the Crescent Node in Eugene, among others. Thursday will offer opening and keynote talks. A variety of session tracks are planned throughout the day on both Thursday and Friday.

An invitation is extended to over 300 professionals in planning and related fields to discuss issues facing our individual and shared communities.



Conference updates can be found
at <http://opi.lcogsuite.net>

RLID (Continued from page 10)

A new lat/long tool has also been implemented in the Lane Maps application. This tool searches and displays latitude and longitude locations on the map, and also allows the user to place lat/long markers on maps, which can then be printed and used with a GPS unit on the ground. For more information, see www.rlid.org/RLID_NEWS/Lat_long_27Dec06.cfm

Custom Lane Maps profiles for RLID users are now being developed, a feature that we feel may be especially valuable for small cities and other LCOG member agencies that need an easy to use web-based mapping and analysis tool. A prototype custom profile has been developed

for Junction City, featuring local data layers such as zoning and comprehensive plan designations, and a default map extent that displays the Junction City UGB. Other local layers will be added as they become available, as well as other customized features.

If you are interested in working with us to develop a custom profile for your agency, please contact Sherry Giglia (sgiglia@lcog.org) or Eric Brandt (ebrandt@lcog.org).



The **REGIONAL FOCUS** is published by Lane Council of Governments on a quarterly basis. An electronic version is available in PDF format at www.lcog.org/rfnews.html.

Editors: Colene Doll
Theron Roe
Scott Shine
Design/Layout/Production
Sarah Finney
Scott Shine
LCOG Creative Services

Contributing Authors:
Bob DenOuden
Sherry Giglia
Judy Goldstein
Denise Kalakay
George Kloeppel
Jeff Krueger
Nick Seigal
Scott Shine
Becky Strickland
Denise Walters

Send comments, requests, or address changes to:
LCOG Regional Focus
99 E. Broadway, Suite 400
Eugene, OR 97401-3111
(541) 682-4072 or sfinney@lcog.org

LCOG CALENDAR

www.lcog.org/calen.html

The screenshot shows a web browser displaying the LCOG Event Calendar. The page title is "LCOG - Event Calendar - Mozilla Firefox". The URL is "http://www.lcog.org/calen.html". The page content includes a navigation menu on the left and a main table of meeting events. A disclaimer states: "The following meetings relate to work tasks conducted by Lane Council of Governments. The meetings are held on a regular basis at the times and locations listed. Meetings that are underlined as a link have meeting materials available online in the Meeting Section. Please note that meeting times and locations are subject to change. To obtain further information, call LCOG at (541) 682-4289."

Month	Date	Time	Committee	Location
April 2007	4	5:30 p.m.	Transportation Advisory Committee	Eugene Library, Singer Rm.
	5	7:00 p.m.	Boarding Commission	Eugene Council Chambers
	10	1:30 p.m.	Senior Services Advisory Council	Hyland Center
	12	11:30 a.m.	Metropolitan Police Committee	Eugene Library, Basscom-Tykeson Rm.
	17	9:30 a.m.	LCOG Executive Committee	LCOG 4th Floor Small Conf. Room
	24	9:45 a.m.	Transportation Planning Committee	LCOG 4th Floor Large Conf. Room
24	7:00 p.m.	LCOG Board	Hyland Center	
May 2007	7	5:30 p.m.	Transportation Advisory Committee	Eugene Library, Singer Rm.
	10	11:30 a.m.	Metropolitan Police Committee	Springfield City Hall, Library Meeting Room
	15	5:30 p.m.	LCOG Executive Committee	LCOG 4th Floor Small Conf. Room
	15	1:30 p.m.	Qualified Services Advisory Council	Schwabert Building, Ed's Room
	21	11:30 a.m.	Lane Economic Committee	LCOG 4th Floor Large Conf. Room
24	9:45 a.m.	Transportation Planning Committee	LCOG 4th Floor Large Conf. Room	
June 2007	4	5:30 p.m.	Transportation Advisory Committee	Eugene Library, Singer Rm.
	7	7:00 p.m.	Boarding Commission	Eugene Council Chambers
	12	1:30 p.m.	Senior Services Advisory Council	Hyland Center
	14	11:30 a.m.	Metropolitan Police Committee	Eugene Library, Basscom-Tykeson Rm.
	18	9:30 a.m.	LCOG Executive Committee	LCOG 4th Floor Small Conf. Room
July 2007	25	9:45 a.m.	Transportation Planning Committee	LCOG 4th Floor Large Conf. Room
	25	7:00 p.m.	LCOG Board	City of Clatskanie
	31	5:30 p.m.	Transportation Advisory Committee	Eugene Library, Singer Rm.
	31	11:30 a.m.	Metropolitan Police Committee	Springfield City Hall, Library Meeting Room
August 2007	6	5:30 p.m.	LCOG Executive Committee	LCOG 4th Floor Small Conf. Room
	13	1:30 p.m.	Qualified Services Advisory Council	Schwabert Building, Ed's Room
	16	11:30 a.m.	Lane Economic Committee	LCOG 4th Floor Large Conf. Room
	20	9:45 a.m.	Transportation Planning Committee	LCOG 4th Floor Large Conf. Room

Current meeting schedules are available on the LCOG website at www.lcog.org/calen.html