

REGIONAL FOCUS

Creswell Garden Lake Legacy Grows

The City of Creswell was awarded a \$50,000 grant to continue the legacy begun by former Creswell Mayor Ron Petitti, who tragically passed away in April of this year. The city, with grant writing assistance from Lane Council of Governments, pursued the Youth Legacy Grant funded by the Oregon Parks and Recreation Department (OPRD) in partnership with Oregon 150. The special one-time allocation is designed both to celebrate Oregon's sesquicentennial and to create unique ways for connecting children and communities with nature.

The City of Creswell's project is inspired by Ron Petitti's passion for Garden Lake Park. Building on Ron's hard work a number of groups

signed on for the project including; Creswell Community Action Alliance (C2A2), Coast Fork Willamette Watershed Council, Nagao/Hansen Architects, Creswell School District, University of Oregon, U.S. Marine Reserves, Creswell Area Historical Society, Ford Family Leadership Group, and many local businesses and clubs. The multi-partner project is designed to be youth-focused and interactive through construction of an educational pavilion along with design and installation of trail signage. The pavilion concept plan shows the pavilion as approximately 40 feet in diameter containing six to eight changeable display panels. Panels will

See **CRESWELL** on page 3



THIS ISSUE

- 2** Director's Desk
- 3** Local Agencies to Acquire LiDAR Data
Staff Profile - Dan Mullholland, Telecommunications Manager
- 4** I-5 Willamette River Bridge Moves Forward
- 5** Wild Iris Ridge Management Plan
Staff Profile - Kathi Wiederhold, Senior Planner
- 6** LCOG's Government Services and Administrative Staff Move to Park Place Building
- 7** Senior and Disabled Services and Lane Transit District – A Collaborative Success
Senior Connections Fundraiser Exceeds Goal
- 8** Senior Meals Program Volunteer Opportunities
Freezing Weather Challenges Senior Meals and Meals on Wheels
- 9** 2008 Appreciation Dinner
LCOG Launches New-Look Website
- 10** Nominations and Sponsors Needed for Older Americans Month Event



George Kloeppel
LCOG EXECUTIVE DIRECTOR

MEMBER AGENCIES

- CITY OF COBURG
- CITY OF COTTAGE GROVE
- CITY OF CRESWELL
- CITY OF DUNES CITY
- CITY OF EUGENE
- CITY OF FLORENCE
- CITY OF JUNCTION CITY
- CITY OF LOWELL
- CITY OF OAKRIDGE
- CITY OF SPRINGFIELD
- CITY OF VENETA
- CITY OF WESTFIR
- EMERALD PEOPLE'S UTILITY DISTRICT
- EUGENE WATER & ELECTRIC BOARD
- FERN RIDGE LIBRARY DISTRICT
- LANE COMMUNITY COLLEGE
- LANE COUNTY
- LANE EDUCATION SERVICE DISTRICT
- LANE LIBRARY DISTRICT
- LANE TRANSIT DISTRICT
- PORT OF SIUSLAW
- SCHOOL DISTRICT 19
- SCHOOL DISTRICT 4J
- SCHOOL DISTRICT 52
- SCHOOL DISTRICT 68
- SIUSLAW VALLEY FIRE DISTRICT
- WESTERN LANE AMBULANCE DISTRICT
- WILLAMALANE PARK & RECREATION DISTRICT

Director's Desk

This agency's Annual Report for the year just past will be distributed at LCOG's Appreciation Dinner on January 22. Weeks ago, when I contemplated writing the traditional introduction to that Report, I was struck by the sweeping changes that all of us have experienced in a short period of time. My initial feeling was fairly dark. National and international circumstances—in security, environmental and economic arenas—prompt feelings of anxiety and uncertainty for all of us. There seems no end to the list of things to worry about.

But then, my writing assignment still before me, my outlook brightened. That "sweeping change" that we are experiencing brings with it opportunities. Beyond shifts in political leadership and inherent differences of opinion, I believe that there is in our nation and in our region energy around the concept of doing things differently—a sense of optimism against the backdrop of anxiety. Can you feel it?

I am committed to do all I can to see that this council of governments continues its long tradition of responsiveness, problem-solving and positive enterprise. As an organization, LCOG exists to support local governments in enhancing this region's quality of life and delivering public services in the most efficient and effective manner possible. As we begin a new year, I am optimistic. There are huge perils that must be addressed by public policy makers and the

society at large. And yet, here in our valley we have learned some important lessons about an efficient and effective public sector. We have demonstrated that cooperation and collaboration yield dividends for the public interest.

We have demonstrated
that cooperation and
collaboration yield dividends
for the public interest.

From client-sensitive human services to the brick and mortar world of public infrastructure, from the coordination of public safety programs to financing transportation improvements, from applying high tech solutions to complex environmental and land use questions to the simple matter of bringing the right people together to find common ground, LCOG consistently demonstrates the value of joint-venture.

On behalf of the staff of this organization, I extend a sincere wish for you and yours for safe, healthy and prosperous 2009. Together, we can work to make that wish a reality.



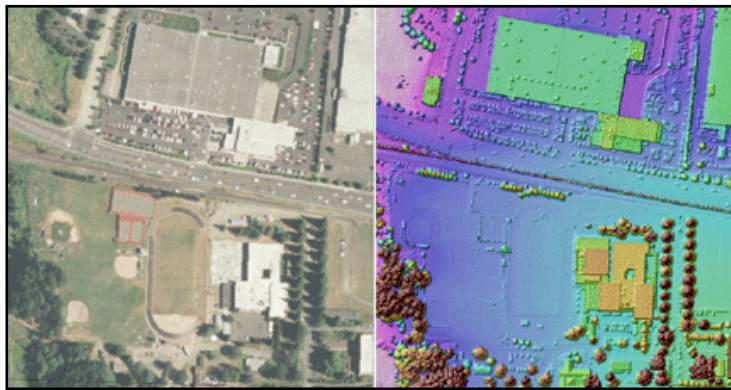
Local Agencies to Acquire LiDAR Data

LCOG along with its regional partners (Eugene, Springfield, Lane County, and EWEB) is participating in the Oregon LiDAR Consortium (OLC) to acquire LiDAR data for the southern Willamette Valley. LiDAR (light detection and ranging) is a new tool that can provide very precise, accurate and high resolution images of the surface of the earth, vegetation, and the built environment.

Airborne LiDAR uses a laser range finder mounted in a precisely navigated aircraft to scan the earth's surface at very high rates and collect very dense clouds of X-Y-Z coordinates. LiDAR data that define the ground, vegetation and man-made structures are useful for anyone wanting to know the shape of the land surface or of the vegetation and buildings on the land.

The Oregon Department of Geology and Mineral Industries (DOGAMI) was asked by the Oregon Legislature to collect high quality LiDAR data throughout Oregon. LiDAR data and imagery will help identify geologic hazards, manage forests, farmlands, fish, streams and fires, and help with urban engineering and planning applications. The legislature appropriated \$1.5 million from the Oregon Watershed Enhancement Board's research funds to DOGAMI as seed money and directed DOGAMI to find funding partners. DOGAMI has been quite successful in this regard.

See **LiDAR DATA** on page 7



LiDAR example: orthophoto (left) and LiDAR "first return" model (right)

From CRESWELL page 1

illustrate fish, birds, water, soils, plants, trees, park ecosystem, and natural and human history of the park and link to a number of interpretative signs throughout the park. Park activities provide for anyone in the community to act as a steward through plant, animal and water monitoring. Each park component will enhance the nature park experience allowing youth, families, local and other visitors to fully experience the natural environment. The goals of the project

are to educate as well as to provide outdoor recreation opportunities in the community for all ages.

A public visioning workshop is scheduled for January 24th at 10 AM in the Creswell Community Center, 99 South First Street. All are invited. The project is set to be completed by June 2009 with a dedication ceremony coinciding with Oregon's 150th Birthday.



Dan Mullholland
TELECOMMUNICATIONS
MANAGER

Dan Mullholland joined LCOG in 1985, starting the position one day before the RFP response opening for phone systems. The selected vendor was managed by Dan to install 8000 telephones in local government and education agency sites in Benton and Lane counties. Dan continues to work with this group to manage and procure telephone services, systems, and lines. The original systems were replaced and upgraded several times to improve system operation and efficiency. A key accomplishment is sharing systems. In Eugene, for example, staff can easily and reliably place or transfer calls between Lane County, City of Eugene, LCOG and other agencies and locations.

See **MULLHOLLAND PROFILE** page 4



From **MULLHOLLAND PROFILE** page 3

In addition to telephone systems, Dan also works with agencies on fiber optic infrastructure and related data networking concerns. He manages the Public Agency Network, an interagency system used to make the most of publicly owned or controlled fiber optic facilities.

Recent projects include establishing backup methods for public safety dispatch centers. In case of a disaster or system loss, the agencies can relocate to another site and continue operations. Dan has also worked the implementation of voice mail replacement and call handling systems, and implementing back up fiber facilities for City of Springfield and Lane County.

Dan holds a bachelors degree in Community Service and Public Affairs from the University of Oregon, and a masters in Telecommunications Management from Golden Gate University.

Dan can be reached at (541) 682-4422 or at dmullholland@lcog.org.

I-5 Willamette River Bridge Moves Forward

Built in 1962, the Interstate 5 Willamette River Bridge separates Eugene and Springfield and provides a critical link for moving freight and people through the I-5 corridor. A 2002 inspection identified shear cracks in the original I-5 bridge. The bridge was structurally deficient and could not be repaired or widened to accommodate traffic increases. The Oregon Department of Transportation determined that a new bridge was needed to improve safety and keep traffic moving on I-5 through Eugene-Springfield. ODOT quickly built a temporary bridge for I-5 traffic until a new span could be funded and built.

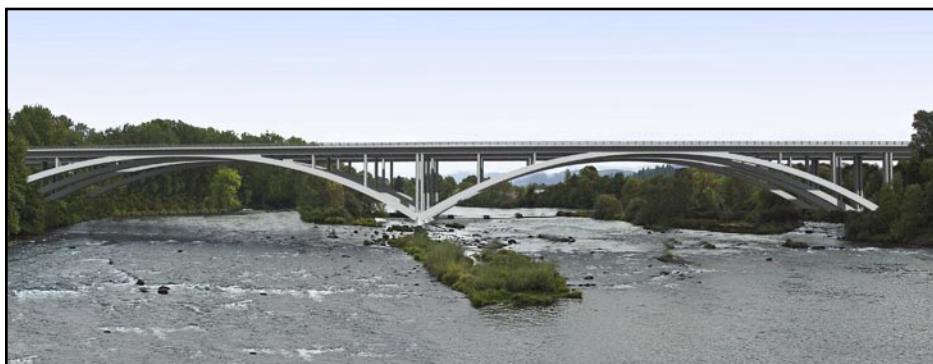
ODOT began an Environmental Assessment study for a new Willamette River Bridge in late 2005. The study looked at a range of potential bridge types, considered possible bridge-related impacts and recommended strategies to reduce those impacts. A "Finding of No Significant Impact" was issued in response to the final study. According to this finding, a full Environmental Impact Statement is not needed and design and construction of the new bridge can proceed. The cities of Springfield and Eugene, along with Lane County, also have approved land use amendments allowing the project to move forward.

A Community Advisory Group (CAG) provided input on the study and is now working with bridge design team. The CAG includes representatives from local neighborhoods,

recreation groups, local artists and architects and the University of Oregon. The CAG has been instrumental in developing project goals, objectives, and design considerations, and ensuring that community values are part of the project. The group makes recommendations to the Project Development Team. The PDT is a decision-making group that includes representatives of Lane County, the cities of Eugene and Springfield, the Federal Highway Administration, ODOT and its bridge design team, and a member of the CAG.

ODOT hired Eugene-based OBEC Consulting Engineers and T.Y. Lin International to work with the CAG, PDT, and the broader community to select a bridge type and design a new bridge. After nearly two years of discussion and relationship-building with residents and local government officials, ODOT selected a design with arches under the deck, known as a "deck-arch" bridge. With its graceful curves and attractive profile, this bridge strikes a balance between a distinctive design and economic reality.

LCOG is assisting OBEC with public involvement on the project, including newsletters, public open houses, design workshops, web site updates, fact sheets, and news releases among other products. For more information, contact Megan Banks, (541) 682-7413 or mbanks@lcog.org.



Rendering of the deck-arch bridge over the Willamette River

Wild Iris Ridge Management Plan

In October, LCOG completed a management plan for the 228-acre City of Eugene owned Wild Iris Ridge property. This site lies just to the north of Bailey Hill in the headwaters of Willow and Spencer Creeks and was purchased in several phases between 2003 and 2007 by the city for habitat preservation, viewshed protection, and recreational use. A planned ridgeline trail exten-

sion will pass through this property in the future as adjacent properties are acquired along the trail corridor. The site boasts a range of plant communities including remnant upland prairie and oak savanna, excellent wildlife habitat, stunning vistas, and varied topography. It also poses a number of difficult management issues such as colonization by invasive plant species,



erosion, and potential fire hazard on the urban fringe. Because the site contains significant amounts of prairie, savanna, and oak woodland (all habitat types that have declined significantly in the Willamette Valley over the past 150 years), the site is particularly valuable from a habitat standpoint.

The Management Plan was developed by LCOG working closely with city staff and other partners and is intended to provide direction for the short- and long-term maintenance and management of the site's plant communities, habitats, and facilities.

The completed plan can be viewed at www.lcog.org/documents/natres/WIRManagementPlan10_08.pdf

Learn more about LCOG publications and resources at www.lcog.org. Click on maps/products and then go to publications.



Kathi Wiederhold
SENIOR PLANNER

Kathi Wiederhold has worked as a planner at the Lane Council of Governments since 1986. She specializes in comprehensive planning for natural resources and watershed management, project management, group facilitation, and public outreach. She is a trained facilitator, has a certificate in public participation, and is a certified professional soil scientist.

Currently, Kathi is the lead public outreach staff for the Metropolitan Planning Organization, which includes staffing the Citizen Advisory Committee. She also is assisting EWEB with setting up and facilitating the Community Advisory Team for EWEB's Riverfront Master Plan. In her management of the Oregon Planning Institute, Kathi strives to grow

See **WIEDERHOLD PROFILE** page 6

From WIEDERHOLD
PROFILE page 5

and change the conference to keep up with the times and meet the needs of planners across the state. She taps her soils expertise to assist Lane County Planning as needed in reviewing planning applications and has helped Springfield with public outreach for their Stormwater Facilities Master Plan. Kathi also facilitated the stakeholder committee and conducted public involvement for the Oakridge Highway 58 Corridor Study and managed an urban growth boundary expansion study for the City of Roseburg.

A lifelong Oregonian, she was born in Portland and grew up in Eugene. She has a Bachelor of Arts from the University of Oregon and a Master of Science from Oregon State University.

Kathi can be reached at (541) 682-4430, or at kwiederhold@lcof.org.

LCOG's Government Services and Administrative Staff Move to Park Place Building

LCOG's Government Services and Administrative work groups moved to the agency's new main office at 859 Willamette Street in Eugene on November 8-9. Even though the distance from the previous office facility in the Wells Fargo Bank Building to the agency-owned Park Place Building was only a few hundred yards, the hard work of sorting, packing and then unpacking and moving in was substantial.

The pressing reality of the move did provide an excellent opportunity to thin out unnecessary documents; and the recycle barrels were filled to overflowing every day during the staff's last few weeks in the Wells Fargo Space. But though the load was made lighter by recycling unneeded material, the relocation was a major effort.

As this is written, the nest-building process is pretty much complete for all who made the move. Work spaces have been personalized and made accommodating for the work that is to be done. An Open House was held on December 4 and well over 200 people from member

agencies and the broader community came to visit the "new digs." And the regular rounds of meetings are making good use of the Park Place Building conference rooms. The December 11, Board of Directors meeting was also held in the Park Place Building and Board members had an opportunity to tour the facility.

Appreciation is due a number of organizations and individuals for their contributions to a smooth relocation. Providing the insightful architectural design of the space was Danny Klute of McDonnell & Associates. His understanding of LCOG's needs led to creative features that will serve the agency well for years to come. For the renovation of LCOG's office space, Mike Dugan headed the construction team for Lee Construction. The company not only did good technical work, but very gracefully worked around the staff after the move to finish up a handful of remaining tasks. Bekins handled the relocation itself and their personnel were not only sensitive to protecting LCOG's precious cargo, but were also careful to minimize impacts on LCOG's tenants on the first three floors of the Park Place Building.

Readers of the *Regional Focus* are invited to stop by to see the new office. Staff and management are very proud of the facility and appreciative to LCOG's members and Board of Directors for authorizing this significant step forward.



The main entrance is located at 859 Willamette Street in Eugene



Senior and Disabled Services and Lane Transit District – A Collaborative Success

An active collaboration between S&DS and Lane Transit District (LTD) began in April of 2008, and has now expanded to include a full team of participants from both agencies. Senior Connections has been providing transportation assessments for ride determinations, beginning in

Oakridge and Florence. Most recently, a new staff person was added to provide assessments in the Eugene-Springfield metro area. Governed by requirements of both Medicaid and the Americans with Disabilities Act, the project is being conducted in a case-management, person-to-person style. Its goal is to serve seniors, the disabled, and those who may need access to medical and non-medical transportation.



The Transportation Assessment Team; (left to right) Terry Parker (LTD), Paula Gourley (S&DS), Becky McMurrick (S&DS), Michelle Apperel (S&DS), Kristine Sirmans (S&DS) and Rand Stamm (LTD).

From LiDAR DATA page 3

What can I do with LiDAR?

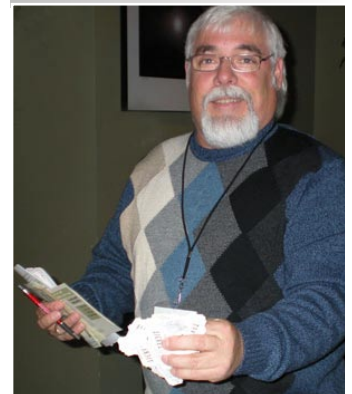
- Find landslides, old cuts and grades
- Measure and estimate fills and cuts
- Find stream channels, measure gradients
- Measure the size and height of buildings, bridges
- Locate and measure every tree in the forest
- Characterize land cover
- Model floods, fire behavior
- Locate power lines and power poles
- Find archeological sites
- Map wetlands and impervious surfaces
- Define watersheds and viewsheds
- Model insolation and shading
- Map road center and sidelines
- Find law enforcement targets
- Map landforms and soils
- Assess property remotely
- Inventory carbon
- Monitor quarries, find abandoned mines
- Enhance any project that requires a detailed and accurate 2-D or 3-D map

Flights over the Lane County portion of the LiDAR acquisition area are being carried out this fall and winter. The partners anticipate receiving data by early summer of 2009.

Content and photos for this article are taken from the OLC Business Plan and DOGAMI's website. To learn more about LiDAR and the OLC visit www.oregongeology.com and click on Oregon LiDAR Consortium (OLC).

Senior Connections Fundraiser Exceeds Goal

Senior Connections' first public fundraising event - a WineStyles "Benefit Tuesday" and concurrent raffle, was held on October 28th. The project netted more than \$6000 for program support, exceeding the goal set for the event. Senior Connections staff members and members of the newly-formed Board of Southern Willamette Services Corporation actively participated in making the event a resounding success. During the evening, more than a dozen raffle prize packages were awarded, with George Kloepfel drawing the winning tickets. Music was provided by Albany-based blues musician, "Froggy" in the warm and inviting atmosphere of the Wine Styles shop in Eugene.



Senior Meals Program Volunteer Opportunities

The Senior Meals Program serves mid-day meals and companionship to people age 60 or better at 12 area dining rooms weekdays throughout Lane County. Meals are served in Eugene-Springfield, Cottage Grove, Creswell, Florence, Junction City, Oakridge, Coburg, Lorane and Veneta. The Senior Meals Program has year-round needs for volunteers for the following tasks:

- Serve meals, clean up, or help with special parties, events, and fundraising
- Musical entertainers (instrumentalists or vocalists) or other types of entertainment
- Creating table decorations or place mats (children and groups included)
- Office Assistants or Special Project Helpers
- Senior Meals Advisory Committee
- Meals on Wheels delivery

Social groups, classrooms, Brownie/Cub Scout troops, families, and individuals are welcome to call with ideas and questions. For more information, call (541)682-4483 or e-mail sds@lco.org.

Freezing Weather Challenges Senior Meals and Meals on Wheels

Operation of the Senior Meals Dining Centers and Meals on Wheels in Lane County was disrupted several days during December's snowy, icy weather. The central kitchen opens at 4:00 a.m. to prepare meals for delivery to the dining centers and Meals on Wheels dispatch locations in Lane County. Many factors are taken into consideration when deciding each morning whether to operate or not. The safety of staff, volunteers and participants is our first consideration. Is it safe for staff to report to work? Will the trucks delivering food from the Central Kitchen to all 13 locations (including Florence) be safe? Once the food reaches the dining rooms and dispatch locations, will the volunteers and participants be

willing and able to come out in the weather? Is it safe for Meals on Wheels volunteers to walk from their cars down frozen sidewalks and up icy steps to front doors? What is the status of the participants? After much consultation, a decision is made for each community.

With the knowledge that freezing weather usually occurs at some point each winter, the program always plans ahead. Each meal site outside the Eugene/Springfield area is stocked with canned items which can be heated, served in the dining room and delivered if it is safe to operate and or deliver meals in their community but food cannot be sent from the central kitchen.

Emergency Meal Boxes, containing six "shelf stable" menus of canned and packaged items are distributed to Meals on Wheels participants in November, with instructions to save these boxes for days when Meals on Wheels cannot safely deliver. When the decision is made to cancel Meals on Wheels delivery, each client receives a phone call to notify them and to check on their welfare. Those with urgent needs get help. When the closures extend for more than a day, staff and intrepid volunteers may be able find 'windows in the weather' to deliver several frozen meals for participants to reheat.

Weather closures may mean a day off for some, but they can be some of the most challenging days of year and there is a great deal of activity going on behind the scenes.





LANE COUNCIL OF GOVERNMENTS CORDIALLY
INVITES YOU TO ATTEND THE

2008 Appreciation Dinner

Thursday, January 22, 2009

CELEBRATE THE DAWN OF A NEW YEAR WITH
LCOG AND THE REGIONAL COMMUNITY.

Get Acquainted Hour
6-7 p.m.

Dinner and Program
7 p.m.

Lane Community College, Center for Meeting and Learning in Building 19

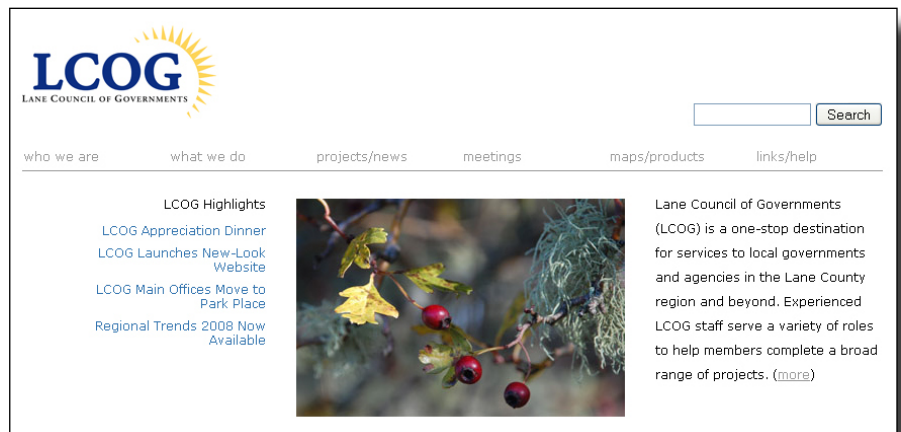
RESERVATION DEADLINE IS THURSDAY, JANUARY 15

Register online at www.lcog.org

LCOG Launches New-Look Website

On December 15, 2008 the new-look LCOG website was launched to the public featuring streamlined searches, map and document download and purchase options, and a number of other enhancements.

Take a look and let us know what you think!





LANE COUNCIL OF GOVERNMENTS

859 WILLAMETTE STREET, SUITE 500
EUGENE, OREGON 97401-2910

The **REGIONAL FOCUS** is published by Lane Council of Governments on a quarterly basis. An electronic version is available in PDF format at www.lcog.org/rfnews.cfm

Editors: Colene Doll
Sarah Finney
Theron Roe

Design/Layout:
Sarah Finney

Contributing Authors:
Eric Brandt
Sandy Karsten
George Kloeppel
Jeff Krueger
Patti Little
Denise Walters
Dan Mullholland
Kathi Wiederhold

Send comments, requests, or address changes to: LCOG Regional Focus, 859 Willamette Street, Suite 500, Eugene, OR 97401-2910, or Sarah Finney at (541) 682-4072 or sfinney@lcog.org.

Nominations and Sponsors Needed for Older Americans Month Event

For the sixth consecutive year, the Lane Coalition of Senior Programs is preparing to recognize local seniors during Older Americans Month, which is in May. The goal is to build awareness throughout Lane County of the many and varied ways older adults continue to contribute to our communities and to the quality of life here in Lane County. This year the Coalition will select 4-6 extraordinary older adults to be photographed for the annual Older Americans Month poster. The theme of the 2009 poster is "Capturing the Oregon Spirit" will coincide with our state's sesquicentennial. The widely distributed poster will feature inspirational seniors nominated from communities across Lane County. The seniors selected for 2009 will be honored at a recognition event at Willamalane Adult Activity Center on May 6.

We are currently seeking nominations and sponsors for this very special event which celebrates the contributions of older adults in Lane County. For further information please contact:

Nominations: Sandy Karsten, skarsten@lcog.org or (541) 682-4378
Sponsorship: Patti Little, plittle@lcog.org or (541) 682-4137

View the LCOG meeting schedule online at www.lcog.org/calendar.cfm